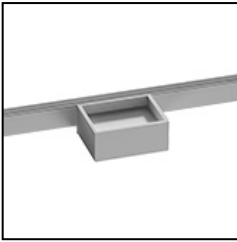


ID Infinity Drain



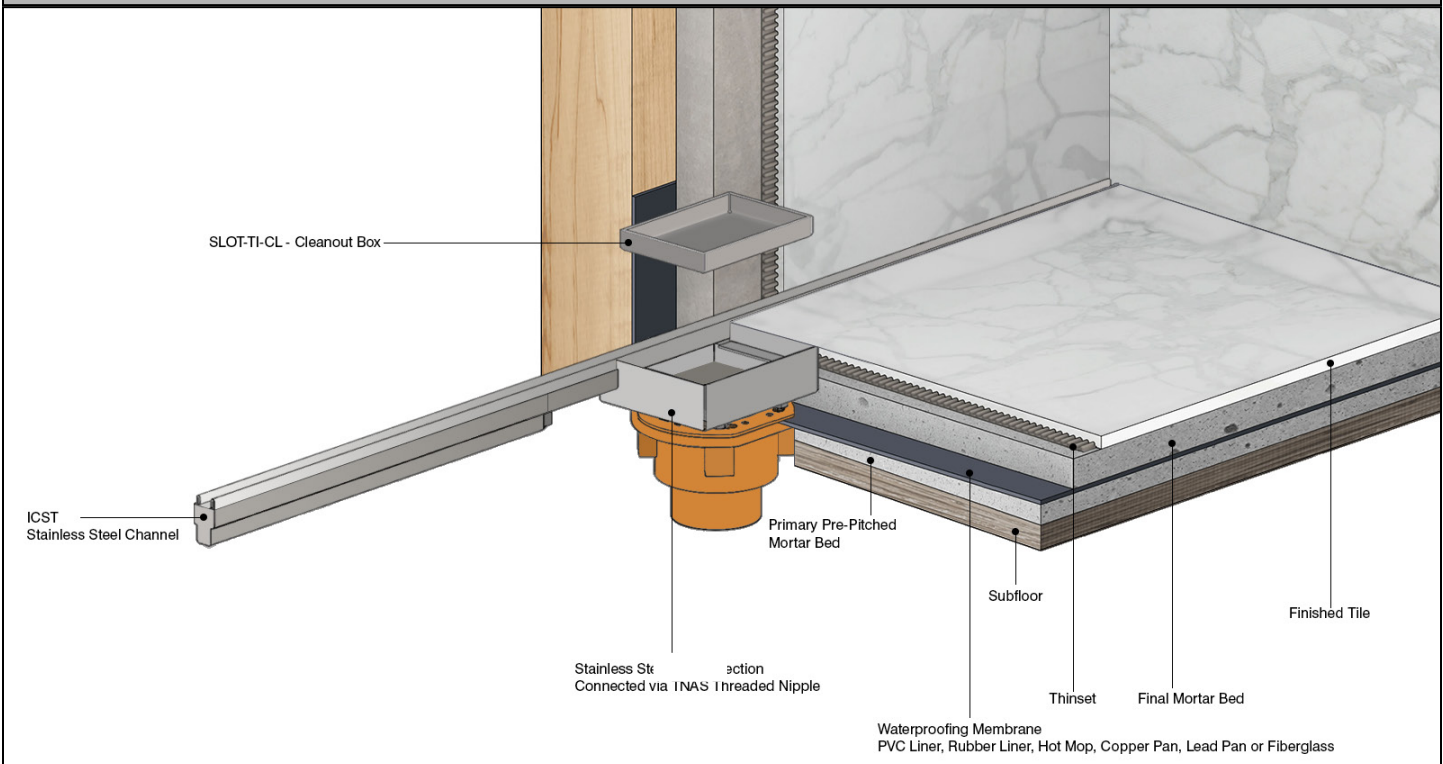
FXST Site Sizable Series

- **FXST 24 - 24" Complete Kit**
- **FXST 32 - 32" Complete Kit**
- **FXST 36 - 36" Complete Kit**
- **FXST 48 - 48" Complete Kit**
- **FXST 60 - 60" Complete Kit**

Features

- 16 gauge, 304L stainless steel Slot
- 16 gauge, 304L stainless steel Channel
- Modify length and outlet location on site
- Indoor or outdoor use
- Works with 2" clamp down floor with 2" throat/strainer size *(not included)*
- **NOT INTENDED** for installation across a barrier-free threshold
- Compatible with: PVC Liner, Rubber Liner (Chloraloy®), Hot Mop, Lead Pan, Copper Pan, or Fiberglass
- Flow rate - 9 gpm per outlet
 - Flow rate measured at outlet only. Measurement does not account for water in channel or sheeting on shower floor.
 - Additional outlets can be added and combined into a larger waste line to increase flow rates

Traditional Waterproofing Installation



Care & Maintenance

FXST stainless steel linear drain top grates are made of 304L stainless steel. This material is non-porous, hygienic, rust-free and extremely durable. Bar Keepers Friend® and Soft Scrub® are commonly available products that can be used to protect and clean your Satin Stainless drain cover. For stains that have been left for an excessive amount of time, stronger cleaning agents such as Steel Brite Cleaner may be needed. For all finishes we recommend using mild soap and a soft cloth for cleaning. DO NOT use any abrasive cleaners, scrub pads or allow household cleaning agents, such as bleach, to sit on the drain cover for a long period of time. Stainless steel does not rust. External factors, such as contamination from other highly ferrous metals, built up road salt, sea salt, or chlorine may have caused "surface" rust which can be removed using Barkeepers Friend®, Soft Scrub®, or Steel Brite Cleaner. Always follow the directions on the bottle. Follow proper maintenance procedures to prevent excessive surface rust. In areas of frequent exposure to salt, chlorine, and other chemical compounds, maintenance of the stainless grates should be performed at least 2-3 times per year.

Infinity Drain
145 Dixon Avenue
Amityville, NY 11701
Phone: 516.767.6786
Fax: 516.740.3066
www.infinitydrain.com



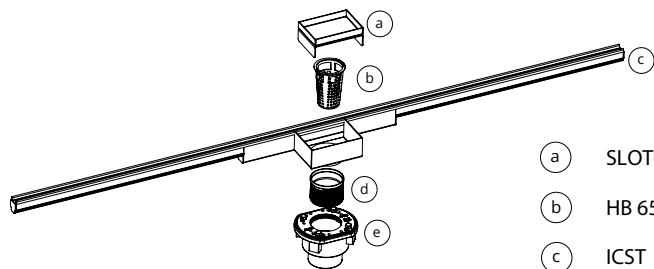
NOTE: Installer must verify all rough-in dimensions prior to installation and consult local and national codes. Conformity and compliance to local and national codes are the responsibility of the installer.

ID Infinity Drain

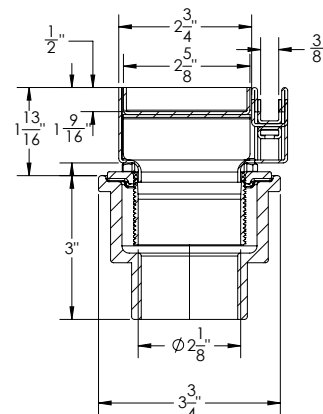
FXST 36

FXST 48

FXST 60



- (a) SLOT-TI-CL - Cleanout Box
- (b) HB 65 - Hair Basket
- (c) ICST - Stainless Steel Channel
- (d) TNAS - Threaded Nipple
- (e) 2 inch clamp down drain assembly
Not included in kit SKU.



SECTION A-A

Model Number	Complete Kit Contents	A (Maximum Over-all Length)	B (Maximum Grate Length)
<input type="checkbox"/> FXST 24	1 - ICST 24 - Stainless Steel Channel: 2 - Stainless Steel Slot Edges 1 - Channel 1 - 10" Outlet Section 1 - SLOT-TI-CL - Tile Cleanout Box 1 - TNAS - Threaded Nipple	24-1/8"	36"
<input type="checkbox"/> FXST 32	1 - ICST 32 - Stainless Steel Channel: 2 - Stainless Steel Slot Edges 1 - Channel 1 - 10" Outlet Section 1 - SLOT-TI-CL - Tile Cleanout Box 1 - TNAS - Threaded Nipple	32-1/8"	32"
<input type="checkbox"/> FXST 36	1 - ICST 32 - Stainless Steel Channel: 2 - Stainless Steel Slot Edges 1 - Channel 1 - 10" Outlet Section 1 - SLOT-TI-CL - Tile Cleanout Box 1 - TNAS - Threaded Nipple	36-1/8"	36"
<input type="checkbox"/> FXST 48	1 - ICST 48 - Stainless Steel Channel: 2 - Stainless Steel Slot Edges 1 - Channel 1 - 10" Outlet Section 1 - SLOT-TI-CL - Tile Cleanout Box 1 - TNAS - Threaded Nipple	48-1/8"	48"
<input type="checkbox"/> FXST 60	1 - ICST 60 - Stainless Steel Channel: 2 - Stainless Steel Slot Edges 1 - Channel 1 - 10" Outlet Section 1 - SLOT-TI-CL - Tile Cleanout Box 1 - TNAS - Threaded Nipple	60-1/8"	60"

Finishes

- Satin Stainless (SS) Polished Stainless (PS) Oil Rubbed Bronze (ORB) Satin Bronze (SB) Matte Black (BK)
- Satin Champagne (SC) Polished Gold (PG) Polished Brass (PB) Gunmetal (GM) Matte White (MW)
- Satin Brass (SR)

Infinity Drain
145 Dixon Avenue
Amityville, NY 11701
Phone: 516.767.6786
Fax: 516.740.3066
www.Infinitydrain.com



NOTE: Installer must verify all rough-in dimensions prior to installation and consult local and national codes. Conformity and compliance to local and national codes are the responsibility of the installer.

AVAILABLE COMPONENTS

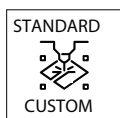
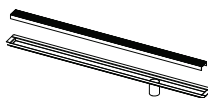
SLOT-TI-CL	Cleanout Box
TNAS	Threaded Nipple
ZSIKA	M-1 All Purpose Sealant
Hair Maintenance kit	HMK-65-A HB 65 SKEY Lift-out Key

CUSTOM FIXED LENGTH SERIES DTAINS



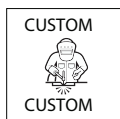
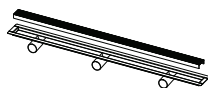
NEW Next Day Custom

- Purchase orders and sign offs received by 10am ET will ship the following day
- Completed custom form must accompany purchase order
- Straight configuration and custom lengths up to 96"
- Grate Styles: Wedge Wire, Offset Slotted, Tile Insert Frame
- Installation types: Fixed (FX)
- Custom outlet placement for multiple outlets
- Finishes: Satin Stainless, Polished Stainless, Oil Rubbed Bronze, Satin Bronze and Matte Black



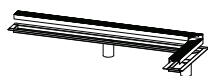
Standard Custom

- Purchase orders and sign offs received by 10am ET will ship within 15 business days
- Completed custom form must accompany purchase order
- Straight configuration and custom lengths up to 96"
- Any standard grate style options
- Installation types: Fixed (FX)
- Custom outlet placement for multiple outlets
- Finishes: Satin Stainless, Polished Stainless, Oil Rubbed Bronze, Satin Bronze and Matte Black



Custom-Custom

- Specialty installation options (Sink drain, Elevator drain, Threshold drain, Vinyl Clamp drain, etc.)
- Any shape and configuration
- Any installation type
- Any outlet type
- Any finish. Standard finishes and color match finish options available.



[CLICK HERE - TO LEARN MORE ABOUT CUSTOM FABRICATION](#)

For additional information regarding Custom Fabrication, Please contact Technical Support at info@infinitydrain.com