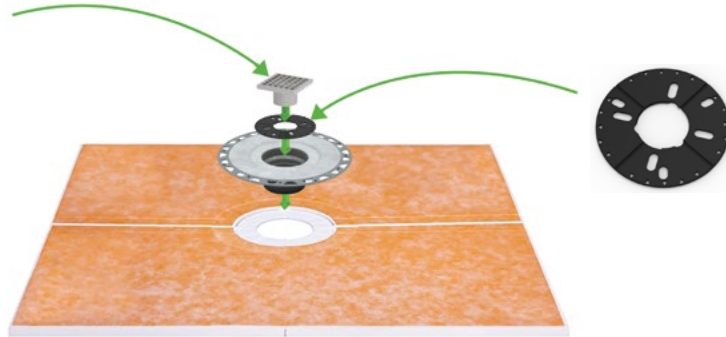


# Schluter®-KERDI Compliant



Universal Ring (UCR 2) Adapts to Schluter®-KERDI Drain Flange.  
For use with Infinity Drain's Center Drains

Infinity Drain's 4" x 4" and 5" round center drains thread into the UCR 2 in place of Schluter's height adjustment collar

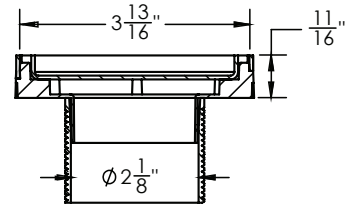


- UCR 2: Universal 2" Ring**
- Material: ABS
  - 5 7/8" Diameter x 2" Threaded Throat
  - Adapts to Schluter®-KERDI Drain Flange
  - For use with 4" x 4" and 5" round center drains (Pro Series and Premium Series)

## 4" x 4" Center Drain Pro Series:



## Pro Series Strainer Kit



## Pro Series build up with UCR 2 and Schluter Kerdi bonding flange

