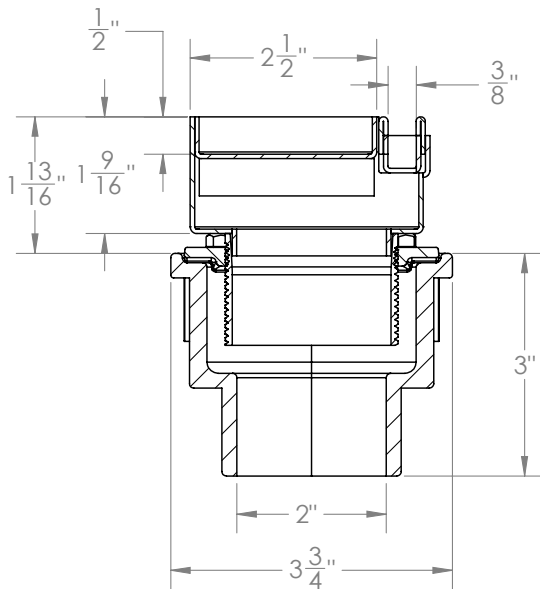


# S-SLOTAS Specifications



## S-SLOTAS:

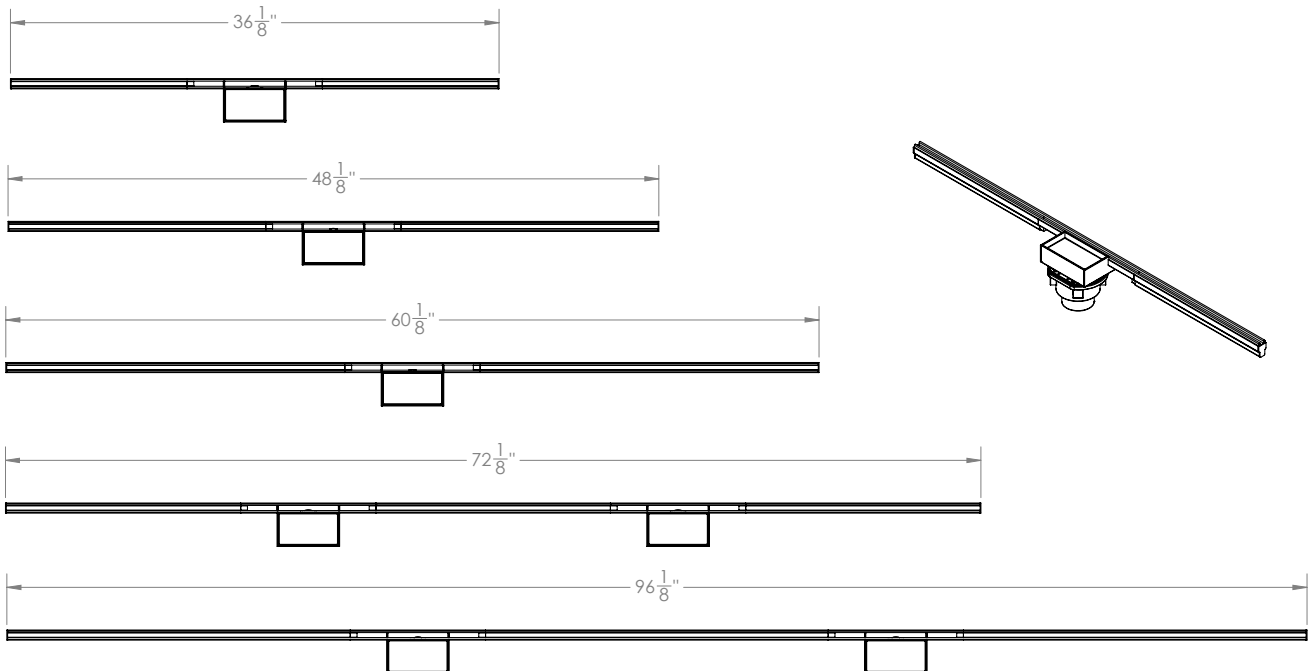
- Stainless steel Slot drain
- Site Sizable™
- 2" threaded waste line connection via TNAS threaded outlet (included with channel)

## Models (overall dimensions):

- S-SLOTAS 36: 36 1/8" L x 3 3/4" W x 4 9/16" H
- S-SLOTAS 48: 48 1/8" L x 3 3/4" W x 4 9/16" H
- S-SLOTAS 60: 60 1/8" L x 3 3/4" W x 4 9/16" H
- S-SLOTAS 72: 72 1/8" L x 3 3/4" W x 4 9/16" H
- S-SLOTAS 96: 96 1/8" L x 3 3/4" W x 4 9/16" H

## Finishes:

- |                      |                   |
|----------------------|-------------------|
| - Satin Stainless    | - Gunmetal        |
| - Polished Stainless | - Matte White     |
| - Satin Bronze       | - Satin Champagne |
| - Oil Rubbed Bronze  | - Polished Brass  |
| - Matte Black        | - Polished Gold   |
|                      | - Satin Brass     |



**Infinity Drain**  
145 Dixon Avenue  
Amityville, NY 11701  
Phone: 516.767.6786  
Fax: 516.740.3066  
www.infinitydrain.com



NOTE: Installer must verify all rough-in dimensions prior to installation and consult local and national codes. Conformity and compliance to local and national codes are the responsibility of the installer.