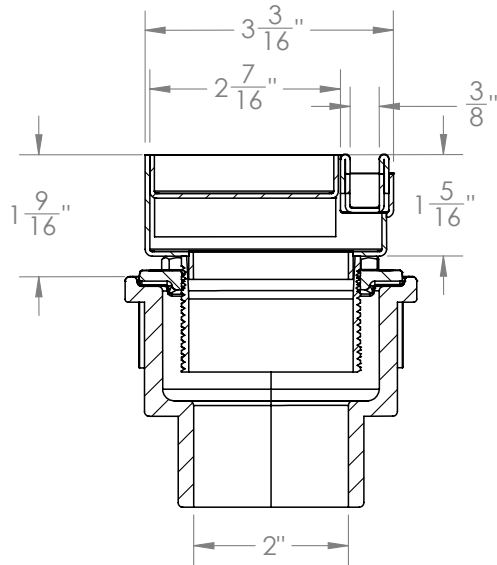


FXST Specifications

ID Infinity Drain



FXST:

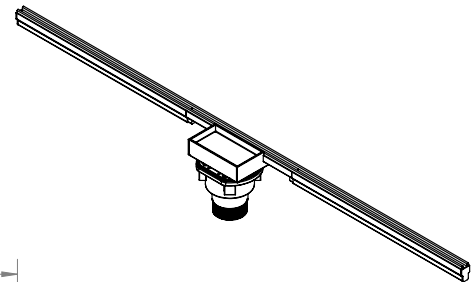
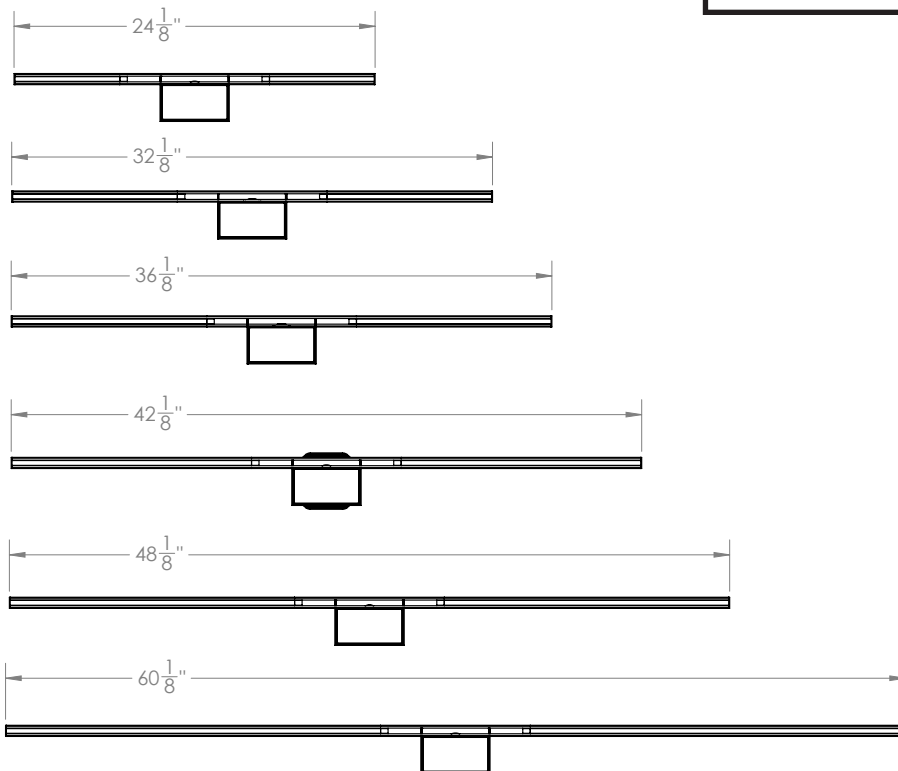
- Stainless steel Slot drain
- Fixed Length NOT Site Sizable™
- 2" threaded waste line connection via TNAS threaded outlet (included with channel)

Models (overall dimensions):

- FXST 24: 24 1/8" L x 3 3/16" W x 1 5/8" H
- FXST 32: 32 1/8" L x 3 3/16" W x 1 5/8" H
- FXST 36: 36 1/8" L x 3 3/16" W x 1 5/8" H
- FXST 42: 42 1/8" L x 3 3/16" W x 1 5/8" H
- FXST 48: 48 1/8" L x 3 3/16" W x 1 5/8" H
- FXST 60: 60 1/8" L x 3 3/16" W x 1 5/8" H

Finishes:

- | | |
|----------------------|-------------------|
| - Satin Stainless | - Gunmetal |
| - Polished Stainless | - Matte White |
| - Satin Bronze | - Satin Champagne |
| - Oil Rubbed Bronze | - Polished Brass |
| - Matte Black | - Polished Gold |
| | - Satin Brass |



Infinity Drain
145 Dixon Avenue
Amityville, NY 11701
Phone: 516.767.6786
Fax: 516.740.3066
www.infinitydrain.com



NOTE: Installer must verify all rough-in dimensions prior to installation and consult local and national codes. Conformity and compliance to local and national codes are the responsibility of the installer.