

## Made with Pride

At Infinity Drain we take pride in crafting our products and we thank you for your purchase. We take customer feedback seriously. Please let us know if you have any issues or suggestions.

Contact us at [info@infinitydrain.com](mailto:info@infinitydrain.com)

Thank you for choosing Infinity Drain.

Jonathan Brill  
President  
Infinity Drain



Made in the USA

516.767.6786

[info@infinitydrain.com](mailto:info@infinitydrain.com) ~ [www.infinitydrain.com](http://www.infinitydrain.com)



## Care & Maintenance User Guide

CMUG-A



## Hair Happens.

A little maintenance goes a long way.

When shower drains clog with hair and debris, they become hard to clean and repairs can become costly. Your new Infinity Drain comes with a Hair Maintenance Kit including a lift out key along with an easy-to-remove grate so you can avoid clogs by following the simple cleaning instructions in this pamphlet.



Use **Lift-Out Key** on either end (not middle) to remove grate



**Avoid harsh chemicals** as they may damage parts and finish



INSTALLATION VIDEOS ONLINE

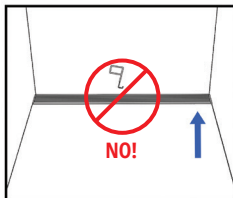


youtube.com/IDInfinityDrain

## Steps to Remove Grate for Cleaning

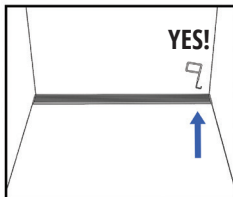
1

Insert Lift-Out Key into one end of grate. Do not pull from center of grate.



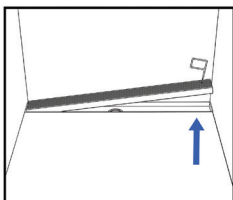
2

Pull up, raise the grate out of the channel on one end and remove completely to clean all hair or debris.



3

Clean the inside of channel and with a soft brush or towel and mild soap and water. Replace the linear grate.



## Most Frequently Asked Questions...

### How often should I clean?

Keep your linear drain clean by wiping it down with a soft towel 1-2 times per month (depending on the frequency of use).

### Should scratches show on polished finishes?

Polished finishes can incur minor scratches with regular wear and tear.

**Keep your Hair Maintenance Kit** near or inside your shower. Share these tips with whomever cleans your bathroom.



## Cleaning Agents

Approved Cleaning Products:

### Stainless Steel Finishes

Stainless steel cleaners such as Bar Keeper's Friend®, Soft Scrub®, or equivalent can be used. For hard set stains, Steel Brite® can be used.

### Color or Decorative Finishes

For all other finishes (Satin Bronze, Matte Black, and Oil Rubbed Bronze) use mild soap and water.

### **WARNING: Do NOT Use These Products!**

Many cleaning agents used for general cleaning contain acids and other harsh chemicals. Using these cleaning agents on or near the drain can cause considerable damage even with just one application.

### **Do not use cleaning agents containing:**

Hydrochloric acid (ex. tile cleaners, toilet bowl cleaners)

Formic acid (ex. clog remover)

Acetic acid (ex. mold & mildew cleaners)

Phosphoric acid (ex. tile cleaners)

Muriatic acid (ex. rust cleaners)

Chlorine bleach solutions



## A Note About Surface Rusting

Stainless steel is non-porous, hygienic, rust free and extremely durable.

### **3 general ways the outer layer can break down:**

1. Mechanical Abrasion by using steel wool, wire brushes, scrapers, etc.
2. Hard Water
3. Chlorides such as chlorine bleach, sea water, salt water, table salt, etc.

See page 6 for which cleaning agents to use and avoid. If traces of ferrous steel are on the outside surface of stainless steel, these traces rust and form discoloration, but this is not actually the stainless steel rusting. Use approved cleaners to remove surface traces of rust and restore your finish.

### **Limited Lifetime Warranty**

Infinity Drain products are covered by a Limited Lifetime Warranty. This Limited Lifetime Warranty is extended only to the original purchaser of the unit, defined as the original end user of the property in which product(s) are installed, under warranty and is valid only when bought through and registered by an authorized Infinity Drain retailer. See website for full warranty.