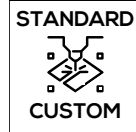


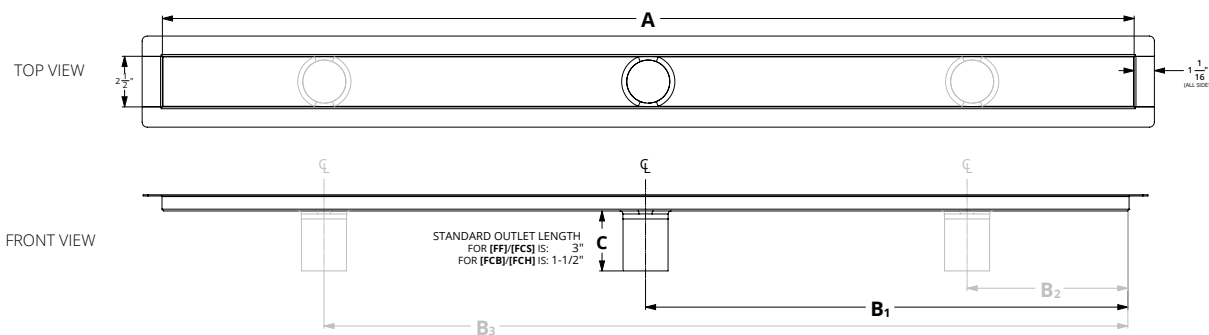
FFC (Fixed Flange) Standard Custom Form



[FF] (Flanged) linear drains are designed for use with liquid applied (cold fluid applied) or fabric sheet membranes. The overall inside length of channel (**A**) is the finished length of the drain, with a 1-1/16" flange on all four sides to accept the waterproofing membrane. All outlet locations (**B**) are measured from the right inside channel edge. For this type of installation a mortar bed or equal is created up to and around the drain with the appropriate slope towards the drain. The waterproofing is applied over the mortar bed and the flange of the channel. Tile or stone is applied directly to the waterproofing for a low profile installation. The standard FC channel is provided with a 2" No-Hub Outlet.

Speciality channel options are available.

- **[FCB]** for Double Waterproofing - Comes with a 2" threaded outlet for use with a clamping drain body and a traditional membrane as a primary waterproofing and has the standard 1-1/16" for a liquid/fabric secondary waterproofing.
- **[FCS]** for Schluter KERDI Waterproofing - Comes with KERDI membrane factory applied to the channel for use with the Schluter KERDI system only. Uses a 2" No-Hub Outlet.
- **[FCH]** for Liquid or Fabric Waterproofing only - Comes with a 2" tapered male threaded outlet (MPT) for direct threaded connection to a 2" female (FPT) fitting.



A: Overall Inside Length	B1: Outlet Location 1	B2: Outlet Location 2	B3: Outlet Location 3	C: Outlet Length
<input type="checkbox"/>	<input type="checkbox"/>	<input type="checkbox"/>	<input type="checkbox"/>	<input type="checkbox"/>
FOR ADDITIONAL OUTLETS IF NEEDED				IF NOT STANDARD

Channel Option: Choose (1)

- ☐ **[FF] Standard**
2" No Hub Outlet
- ☐ **[FCB] Double Waterproofing**
2" Threaded Outlet
- ☐ **[FCS] Flange with KERDI**
Factory applied KERDI - 2" No Hub Outlet
- ☐ **[FCH] Tapered Threaded**
2" MPT Outlet

Grate Styles - Choose (1) Below

- ☐ **FFAS 25**
1" WIDE WEDGE WIRE
- ☐ **FFAS 65**
2 1/2" WIDE WEDGE WIRE
- ☐ **FFAS 125**
3" WIDE WEDGE WIRE 3" OUTLET STANDARD
- ☐ **FFTIF 65**
TILE INSERT

Channel Only ☐

- ☐ **FFIG 65**
SLOTTED PATTERN
- ☐ **FFED 65**
OFFSET OVAL PATTERN
- ☐ **FFMN 65**
MARC NEWSON PATTERN
- ☐ **FFSG 65**
SOLID GRATE

Grate Finish - Choose (1)

- ☐ Satin Stainless (SS)
- ☐ Polished Stainless (PS)
- ☐ Matte Black (BK)
- ☐ Satin Bronze (SB)
- ☐ Oil Rubbed Bronze (ORB)
- ☐ Custom Finish (Specify Color to Match)
- ☐ Gunmetal
- ☐ Matte White
- ☐ Satin Champagne
- ☐ Polished Brass
- ☐ Polished Gold
- ☐ Custom finishes can be made to match a sample provided by the customer. Contact Infinity Drain for availability of desired finish.

Terms and Conditions:

By signing this form, you are agreeing to the terms and conditions herein. All details and finishes stated are correct. All dimensions are correct and are to be held within a tolerance of +/- 1/16". All other details and dimensions that are specified as "standard" are subject to manufacturer's tolerance and change without notice. We can assume no responsibility for use of superceded or void data. All custom orders are non-cancellable, non-returnable and non-refundable.

Infinity Drain
 145 Dixon Avenue
 Amityville, NY 11701
 Phone: 516.767.6786
 Fax: 516.740.3066
 www.infinitydrain.com



APPROVAL

NAME <input type="checkbox"/>	JOB NAME/REFERENCE <input type="checkbox"/>
SIGNATURE <input type="checkbox"/>	DATE <input type="checkbox"/>

For pricing email: quotes@infinitydrain.com