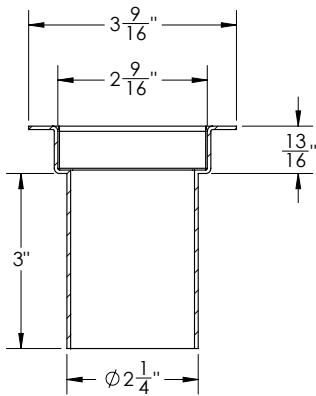


NDC FCS 65 Specifications

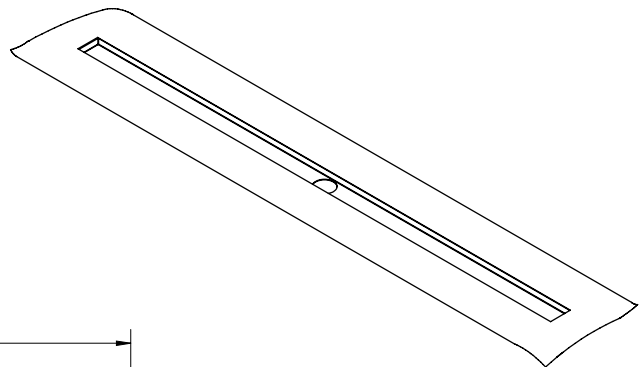
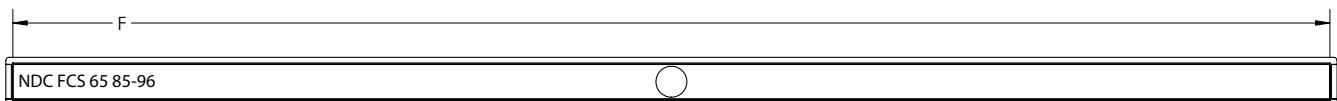
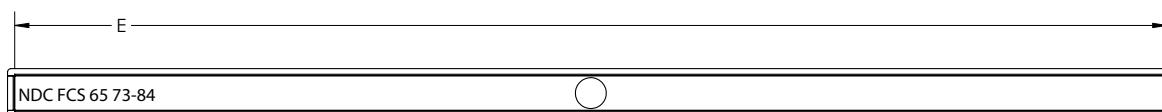
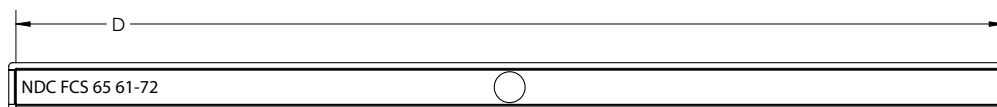
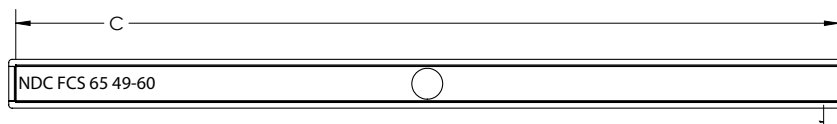
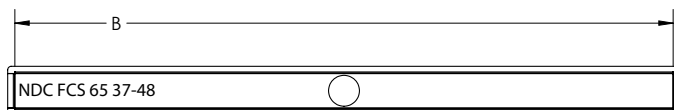
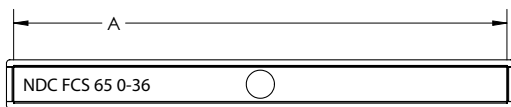


NDC FCS 65:

- Stainless steel flanged channel for Next Day Custom
- Fixed Length NOT Site Sizable™
- NDC FCS series linear drains are compliant with Schluter®-Kerdi shower system warranty. Warranty back by Infinity Drain.
- 16 gauge, 304L stainless steel
- 2" No-Hub wasteline connection via rubber coupling (not included)

Models (Channel dimensions):

- NDC FCS 65 0-36: 0 to 36-15/16" custom length (A) x 3 9/16" W x 4" H
- NDC FCS 65 37-48: 37" to 48-15/16" custom length (B) x 3 9/16" W x 4" H
- NDC FCS 65 49-60: 49" to 60-15/16" custom length (C) x 3 9/16" W x 4" H
- NDC FCS 65 61-72: 61" to 72-15/16" custom length (D) x 3 9/16" W x 4" H
- NDC FCS 65 73-84: 73" to 84-15/16" custom length (E) x 3 9/16" W x 4" H
- NDC FCS 65 85-96: 85" to 96" custom length (F) x 3 9/16" W x 4" H



Infinity Drain
145 Dixon Avenue
Amityville, NY 11701
Phone: 516.767.6786
Fax: 516.740.3066
www.infinitydrain.com



NOTE: Installer must verify all rough-in dimensions prior to installation and consult local and national codes. Conformity and compliance to local and national codes are the responsibility of the installer.