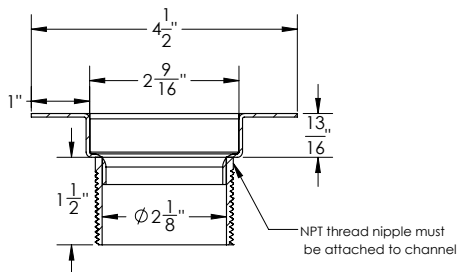


FCH 65C Specifications

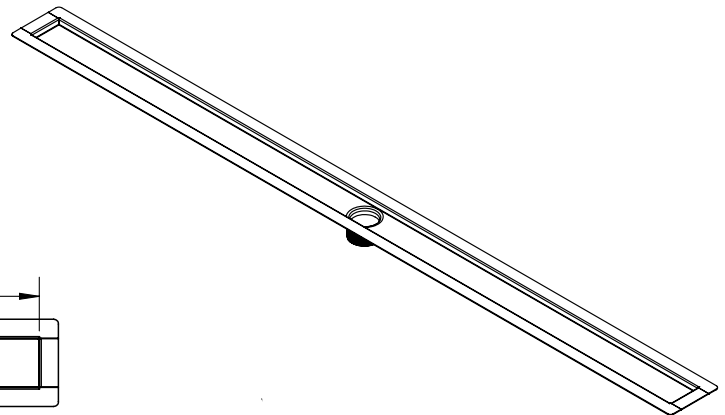
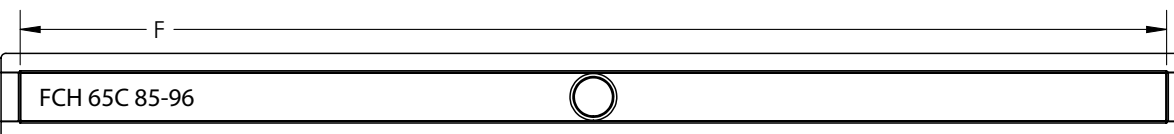
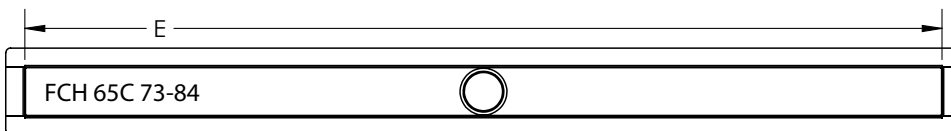
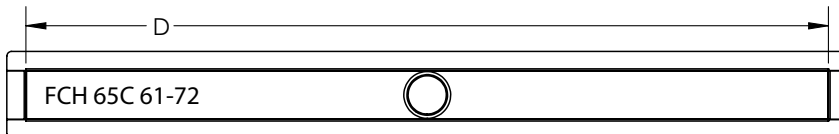
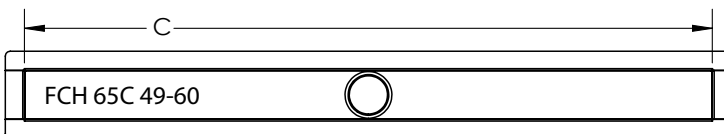
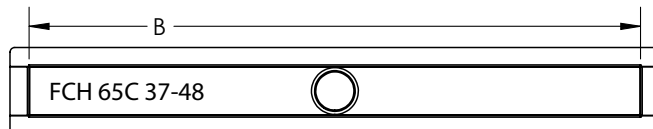
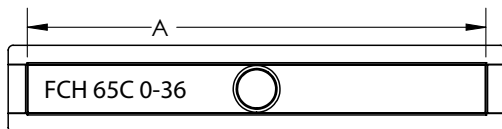


FCH 65C:

- Stainless steel flanged channel for Standard Custom
- Fixed Length NOT Site Sizable™
- Compatible with liquid / fabric waterproofing
- 16 gauge, 304L stainless steel
- 2" tapered thread connection (included with channel)

Models (channel dimensions):

- FCH 65C 0-36: 0 to 36-15/16" custom length (A) x 4 1/2" W x 3 1/2" H
- FCH 65C 37-48: 37" to 48-15/16" custom length (B) x 4 1/2" W x 3 1/2" H
- FCH 65C 49-60: 49" to 60-15/16" custom length (C) x 4 1/2" W x 3 1/2" H
- FCH 65C 61-72: 61" to 72-15/16" custom length (D) x 4 1/2" W x 3 1/2" H
- FCH 65C 73-84: 73" to 84-15/16" custom length (E) x 4 1/2" W x 3 1/2" H
- FCH 65C 85-96: 85" to 96" custom length (F) x 4 1/2" W x 3 1/2" H



Infinity Drain
145 Dixon Avenue
Amityville, NY 11701
Phone: 516.767.6786
Fax: 516.740.3066
www.infinitydrain.com



NOTE: Installer must verify all rough-in dimensions prior to installation and consult local and national codes. Conformity and compliance to local and national codes are the responsibility of the installer.