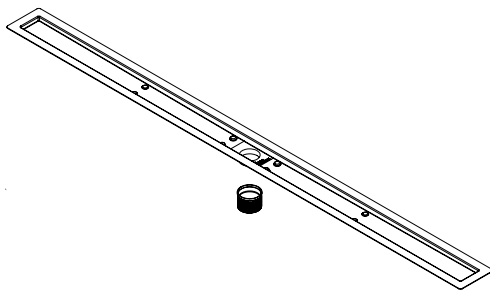
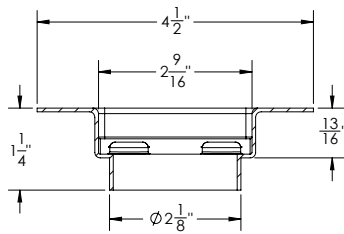


# FCB 65C Specifications



## FCB 65C:

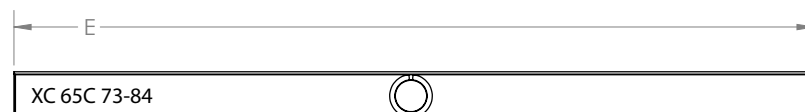
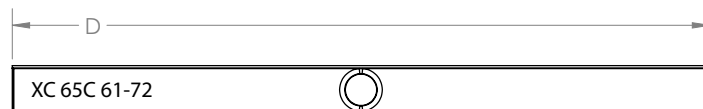
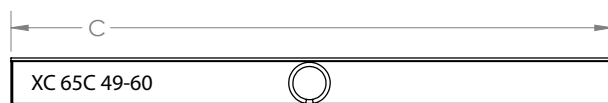
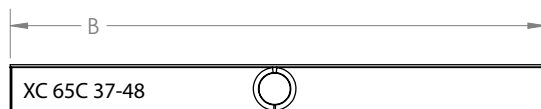
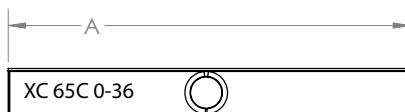
- Stainless steel flanged channel for Next Day Custom and Standard Custom
- Compatible with liquid / fabric and traditional waterproofing when used together
- 16 gauge, 304L stainless steel
- 2" threaded wasteline connection via TNAS (included with channel)

## Models (Channel dimensions):

- FCB 65C 0-36: 0 to 36-15/16" custom length (A) x 4 1/2" W x 1 1/4" H
- FCB 65C 37-48: 37" to 48-15/16" custom length (B) x 4 1/2" W x 1 1/4" H
- FCB 65C 49-60: 49" to 60-15/16" custom length (C) x 4 1/2" W x 1 1/4" H
- FCB 65C 61-72: 61" to 72-15/16" custom length (D) x 4 1/2" W x 1 1/4" H
- FCB 65C 73-84: 73" to 84-15/16" custom length (E) x 4 1/2" W x 1 1/4" H
- FCB 65C 85-96: 85" to 96" custom length (F) x 4 1/2" W x 1 1/4" H

## Finishes:

- Satin Stainless - SS
- Polished Stainless - PS
- Satin Bronze - SB
- Oil Rubbed Bronze - ORB
- Matte BlackK



**Infinity Drain**  
145 Dixon Avenue  
Amityville, NY 11701  
Phone: 516.767.6786  
Fax: 516.740.3066  
www.infinitydrain.com



NOTE: Installer must verify all rough-in dimensions prior to installation and consult local and national codes. Conformity and compliance to local and national codes are the responsibility of the installer.