

Commercial Portfolio: Drain Solutions  
Infinite Possibilities. Inspired Design.



EXCEPTIONAL  
PROJECTS ARE  
BUILT FROM THE  
BOTTOM UP.



**Complete customer service from start to finish.**

Infinity Drain opens a world of possibilities: barrier free accessibility, hygienic and dependable water management, a beautiful, spa-like environment. And while such a small component delivers outsized benefits, you need a full-service partner who is a trusted industry resource, whether you are specifying for 500 rooms in a world-class development or a single bespoke space.

**What happens next in order to craft the perfect drainage solution?**

We begin by understanding your project's unique needs. And importantly, Infinity Drain provides full technical support and lightning fast response times. Our passion for detail goes far beyond the product we sustainably create in our Amityville, New York manufacturing facility. Every project is assigned a team to *provide technical specifications, offer real-time scheduling flexibility for releases and to deliver on-time and direct to your jobsite.* What's most important to us is that your vision and your design is achieved seamlessly and effortlessly from conception to completion.

**Beyond the Drain. Beyond the Bath. Beyond Compare.**

For over a decade, Infinity Drain has established itself as a leader in design-centric architectural shower drains with a reputation of unsurpassed quality. From hand polishing to custom fabrication, Infinity Drain offers the broadest selection of decorative choices and installation options. Its designs and patented innovations continue to shape barrier-free bathroom design.

**Distinctive Designs. Dependable Durability.**

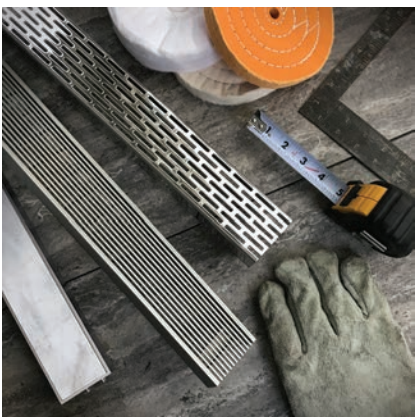
Award-winning drain designs with stress-free durability and a limited lifetime warranty. Reassuring lifetime guarantee against waterproofing failure for Stainless Steel Shower Bases.

**Concierge Customer Service.**

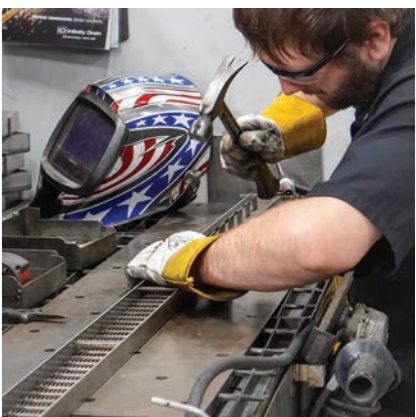
Infinity Drain provides technical support, consultation, fast delivery and flexible service.

**Customized Architectural Drainage.**

Complete resource for custom fabrication, Stainless Steel Shower Bases and drain solutions beyond the bath including landscaping, outdoor, amenities and work spaces.



EXPLORE A WORLD  
OF LIMITLESS  
DESIGN OPTIONS  
WITH  
INFINITY DRAIN.







BELLAGIO  
RESORT



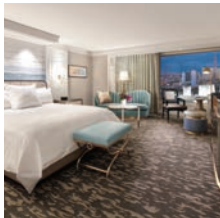
**Architect:** The Gettys Group

**Location:** Las Vegas, Nevada

**Application:** Guest Room Showers

**Backstory:** The Bellagio Resort is the quintessential destination for extravagance in Las Vegas. A redesigned bathroom outfitted with a show-stopping walk-in shower rounds out the elevated experience. To ensure these custom-designed showers had a sturdy drainage system and adequate flow rate, The Gettys Group turned to Infinity Drain to outfit each of the 2,568 guest bathrooms.

**Other Hospitality Projects:** Firekeepers Casino, MI ~ Nobu Hotel, IL ~ Ritz Carlton Scottsdale, AZ ~ TWA Hotel, NY



TD 5 Center Drain

ONE WALL STREET  
CONDOMINIUM RESIDENCES

ONE WALL  
STREET

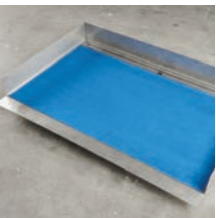
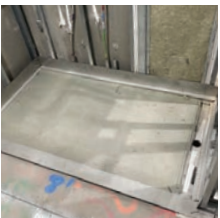
**Architect:** SLCE Architects

**Location:** New York, New York

**Application:** Residential Showers

**Backstory:** Every inch of One Wall Street is steeped in rich Art Deco heritage. To complete the project on-time and within budget, Macklowe Properties leaned on its long-standing relationship with Infinity Drain to procure 550 high-quality, custom, Stainless Steel Shower Bases. The bases arrived flood-tested with a pre-sloped floor primed for tiling which sped up installation. Most enticing to Macklowe was Infinity Drain's lifetime waterproofing guarantee.

**Other Multi-Family Projects:** Hudson Yards, NY ~ Estates at Acqualina, FL ~ Nordstrom Tower, NY ~ Tribune Towers, IL



Stainless Steel Shower Base



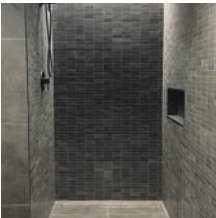
ROCKET Mortgage  
FIELDHOUSE

ROCKET  
MORTGAGE  
FIELDHOUSE

**Architect:** Rosetti, SHoP Architects, Gensler  
**Location:** Cleveland, Ohio  
**Application:** Players' Locker Room Showers and Restroom

**Backstory:** SHoP and Rossetti set the tone of the Cleveland Cavaliers' Rocket Mortgage FieldHouse with sleek, modern upgrades. The restroom area was designated as a complete wet room with Infinity Drain's linear and center Tile Insert drains. To meet the specification standards set by the NBA, Infinity Drain fabricated custom length linear drains for the showers to meet the needs of the shower head height, water production as well as to avoid flooding.

**Other Sports Facilities:** Climate Pledge Arena, WA ~ Mercedes Benz Stadium, GA ~ NY Islanders Training Facility, NY ~ Orlando Magic Training Facility, FL



Custom length FFTIF 65 TD 15 center drain



PELOTON  
FLAGSHIP  
STUDIO



**Architect:** Bernheimer Architecture  
**Location:** New York, New York  
**Application:** Locker Room Showers

**Backstory:** Peloton's 35,000-square-foot, flagship location, called Peloton Studios, at Brookfield's Manhattan West development will be a beacon of fitness programming unlike anything created in the industry to date. Located in New York's trendy Chelsea District, the Peloton Spinning Studio features a spa-quality ambience, refreshment lounge and a sports fashion retail shop. Infinity Drain provided their FXLTIF 65 linear drains for the luxurious locker room showers.

**Other Fitness Projects:** Equinox, NY ~ Planet Fitness, Various ~ YMCA, Various ~ Vida Fitness, Various



FXLTIF 65





THE VALLEY  
HOSPITAL



**Architect:** HDR Architects

**Location:** Paramus, New Jersey

**Application:** Patient Room Showers

**Backstory:** The Valley Hospital is constructing a state-of-the-art, 372-bed hospital in Paramus, New Jersey. Infinity Drain was tasked with enriching the patient restrooms to provide barrier free comfort with an elevated environment. Infinity Drain's Site Sizable® S-LAG 65 was specified in a 2mm Wedge Wire design for flexibility in installation and placement.

**Other Health Care Projects:** Midland Hospital, TX ~ Tri Valley Health System, CA ~ Madonna Rehabilitation Hospital, NE ~ Reunion Rehabilitation Hospital - Phoenix, AZ



S-LAG 65



INSPIR  
CARNEGIE  
HILL BY  
MAPLEWOOD  
SENIOR  
LIVING

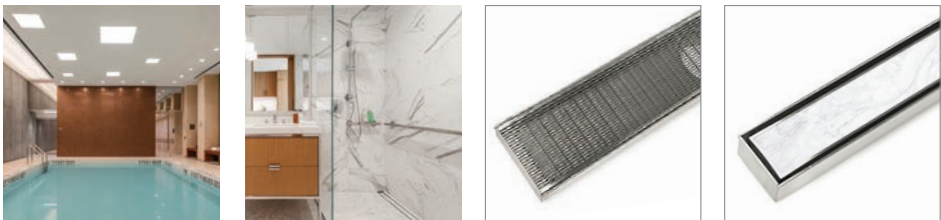
**Architect:** Handel Architects

**Location:** New York, New York

**Application:** Pool, Indoor Garden (Courtyard), Resident Room Showers

**Backstory:** Maplewood takes Senior Living to new heights with their Inspir property at the Carnegie Building in New York City designed by Handel Architects. Infinity Drain customized drains for 215 shower units with a modern ADA compliant tile insert drain and advanced cleanability within a wet room concept. Customized drainage solutions for the indoor pool and outdoor tranquility garden deliver safe, slip resistant accessibility for residents and staff.

**Other Senior Living Projects:** Paradise Valley Estate, CA ~ Teresa's House Senior Living, TX ~ Variel Care Center, CA ~ 2330 Broadway, NY



S-TIFAS 65 (Shower)

Custom FXC TIF 65 (Pool/Garden)





KPMG  
LEARNING  
CENTER

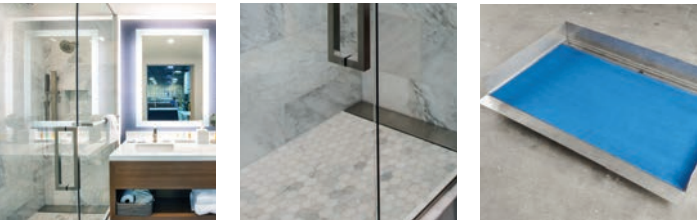
**Architect:** Gensler

**Location:** Orlando, Florida

**Application:** Guest Room Showers

**Backstory:** KPMG Lakehouse, designed by Gensler, is a high-tech training and education facility on a 55-acre property that includes 800 rooms, which closely resemble hotel rooms. DPR Construction utilized SurePods to prefabricate all 800 bathrooms and Infinity Drain provided customized Stainless Steel Shower Bases with Solid Grate Style Linear Drains. This all-in-one solution saved time and labor with a lifetime waterproofing guarantee that fit the client's design and pre-fabrication needs.

**Other Corporate Projects:** Nike World HQ, OR ~ Salesforce Tower, IL ~ Lockheed Martin, CA ~ Garmin Building, KS



Stainless Steel Shower Base



CLEMSON  
FOOTBALL  
OPERATIONS  
FACILITY



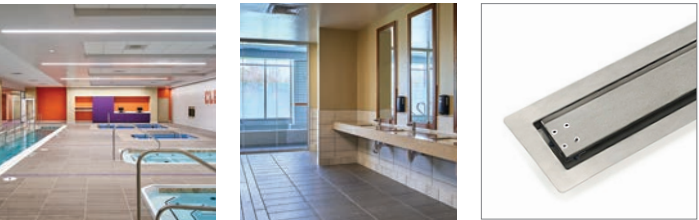
**Architect:** GoodWyn, Mills and Cawood (GMC) & HOK (Kansas City)

**Location:** Clemson, South Carolina

**Application:** Workout Facility

**Backstory:** Clemson's football operation facility sets a new standard for the student-athlete experience. HOK worked on this project with GMC as architect of record and DPR as contractor. The complex includes 1.5 acres of outdoor leisure space and state-of-the-art training facilities. Infinity Drain provided customized FFTIF 65 tile-in drains at different lengths for the locker rooms, spa and pool areas.

**Other Education Projects:** Bishop Eustace Preparatory School, NJ ~ Santa Monica High School, CA ~ NCSU Carmichael Gym, NC ~ Oklahoma State University School of Music, OK



FFTIF 65





SCOTT  
COUNTY  
GOVERNMENT  
CENTER



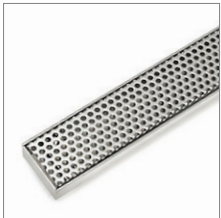
**Architect:** Wold Architects & Engineers

**Location:** Shakopee, Minnesota

**Application:** Restroom Floor Drain

**Backstory:** Wold Architects and Engineers partnered with Scott County to construct a 145,000 square foot addition and renovation of the existing Government and Justice Centers. Designs include placing all enclosed spaces at the building's core to allow for natural light in and views out. Infinity Drain provided floor drains for all public restrooms for safety, accessibility and cleanability.

**Other Government Projects:** Louden County Courthouse, PA ~ Grapevine Fire Station, TX ~ New Orleans Police Department, LA ~ US Army Mountain Warfare School, VT



S-DGAS 65



BALTIMORE/  
WASHINGTON  
INTERNATIONAL  
THURGOOD  
MARSHALL  
AIRPORT

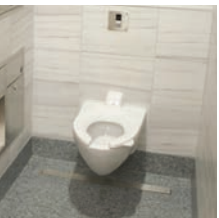
**Architect:** SP Architects, Inc.

**Location:** Baltimore, Maryland

**Application:** Restroom Linear Floor Drain

**Backstory:** SP Architects, Inc. and the Maryland Aviation Administration (MAA) completed the new Concourse A expansion at Baltimore Washington International Airport (BWI). The restrooms have been updated to a new standard that will serve as template for planned bathroom renovations across the rest of the airport and combine some of the best design aspects from restrooms around the country and the world. Infinity Drain assisted with customized floor drains under the sinks and toilets for all of the restrooms.

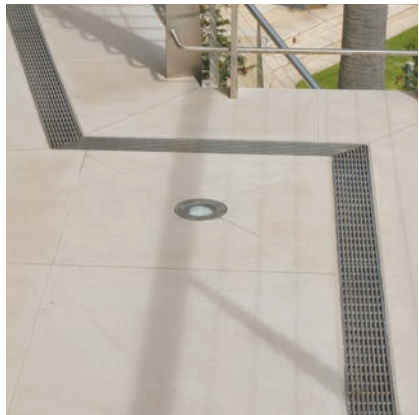
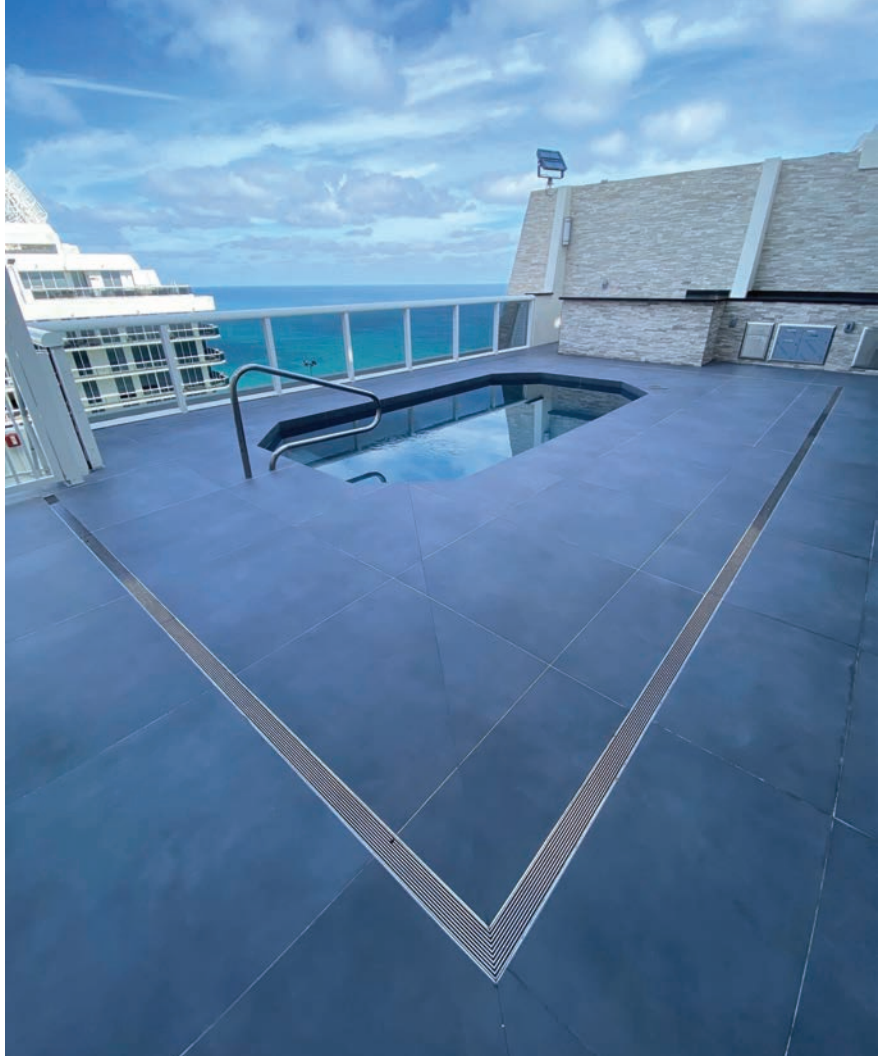
**Other Transportation Projects:** Transbay Transit Center, CA ~ LaGuardia Airport, NY ~ New York MTA, NY ~ Newark Airport, NJ



Custom FXSG 65



THE GRATE  
OUTDOORS



**Outdoor, Landscape, and Amenity Water Management Solutions.**

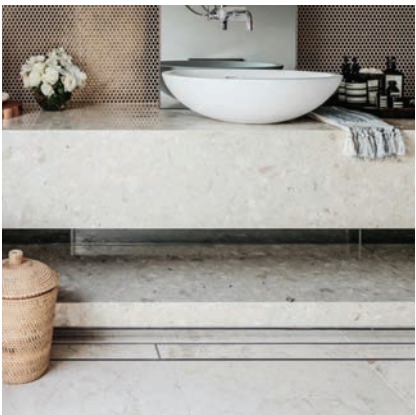
From in-stock products to custom inspiration, Infinity Drain offers drainage solutions crafted to your exacting needs. Our team of engineers and technical specialists make the process effortless from planning and drawing review, to product selection and site coordination. Whether it's in the shower or beyond, Infinity Drain delivers on our promise of design, performance and dependability.

CUSTOM  
FABRICATION



**We'll Go to Any Length... or Curve.**

Whether it's one drain or hundreds, Infinity Drain fabricates everything to your specification from the grate and finish, to the waterproofing and outlet location. We design elegant solutions to move water safely, hygienically and without barriers. We'll go to any length or curve to make your design a reality. The options are infinite.







## **Infinity Drain®**

145 Dixon Avenue, Amityville, New York 11701

Phone 516.767.6786 ~ Fax 516.740.3066

[www.infinitydrain.com](http://www.infinitydrain.com)

**LT017-01-22**



Infinity Drain is made in the USA