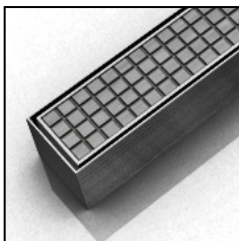


# ID Infinity Drain



## S-TIF 65 Series SITE SIZABLE PVC

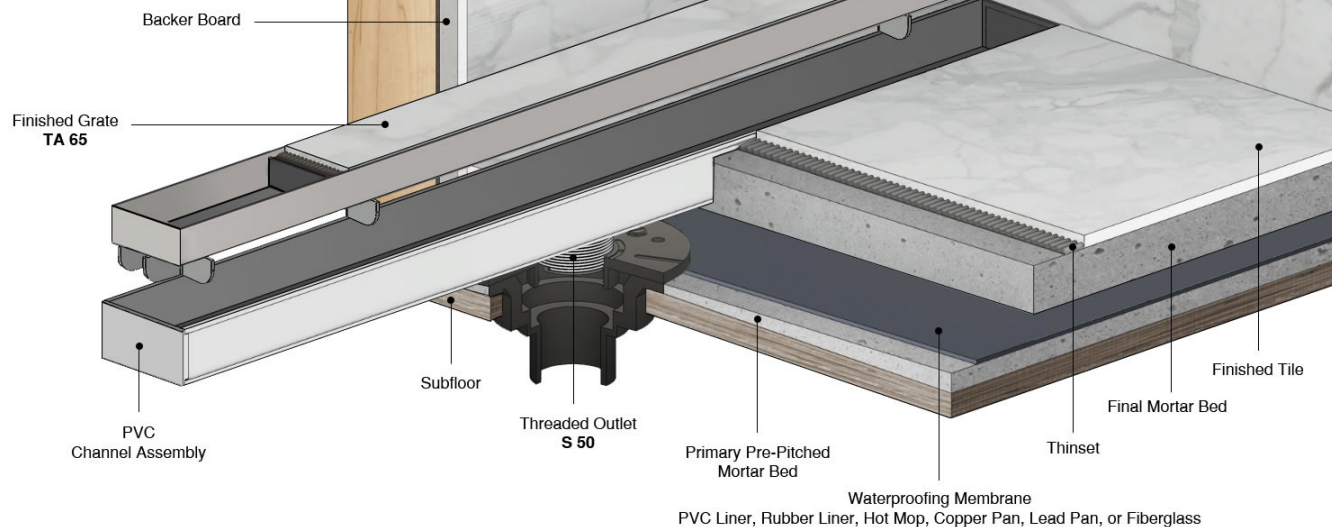
- S-TIF 6540 - 40" Complete Kit
- S-TIF 6548 - 48" Complete Kit
- S-TIF 6560 - 60" Complete Kit
- S-TIF 6580 - 80" Complete Kit
- S-TIF 6596 - 96" Complete Kit

### Features

- Modify length and outlet location on site
- Indoor or outdoor use
- PVC Channel
- 12 gauge, 304L stainless steel Tile Insert Frame
- Works with 2" clamp down floor with 2" throat/strainer size *(not included)*
- NOT INTENDED for installation across a barrier-free threshold
- Compatible with: PVC Liner, Rubber Liner (Chloraloy®), Hot Mop, Lead Pan, Copper Pan, or Fiberglass
- Flow rate - 9 gpm per outlet
  - Flow rate measured at outlet only. Measurement does not account for water in channel or sheeting on shower floor.
  - Additional outlets can be added and combined into a larger waste line to increase flow rates

### Installation

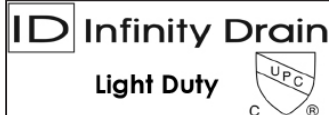
#### S Site Sizable PVC Channel



### Care & Maintenance

S-TIF 65 stainless steel linear drain top grates are made of 304L stainless steel. This material is non-porous, hygienic, rust-free and extremely durable. Bar Keepers Friend® and Soft Scrub® are commonly available products that can be used to protect and clean your Satin Stainless drain cover. For stains that have been left for an excessive amount of time, stronger cleaning agents such as Steel Brite Cleaner may be needed. For all finishes we recommend using mild soap and a soft cloth for cleaning. DO NOT use any abrasive cleaners, scrub pads or allow household cleaning agents, such as bleach, to sit on the drain cover for a long period of time. Stainless steel does not rust. External factors, such as contamination from other highly ferrous metals, built up road salt, sea salt, or chlorine may have caused "surface" rust which can be removed using Barkeepers Friend®, Soft Scrub®, or Steel Brite Cleaner. Always follow the directions on the bottle. Follow proper maintenance procedures to prevent excessive surface rust. In areas of frequent exposure to salt, chlorine, and other chemical compounds, maintenance of the stainless grates should be performed at least 2-3 times per year.

Infinity Drain  
145 Dixon Avenue  
Amityville, NY 11701  
Phone: 516.767.6786  
Fax: 516.740.3066  
www.Infinitydrain.com



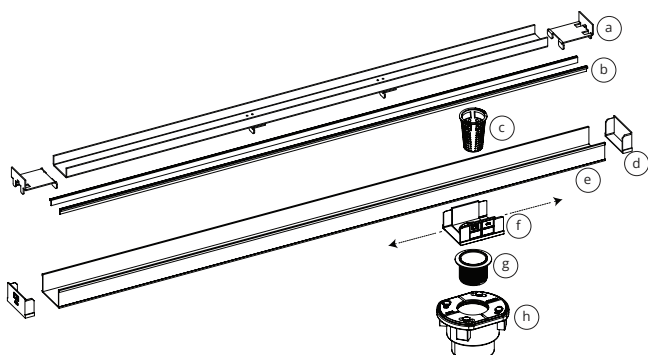
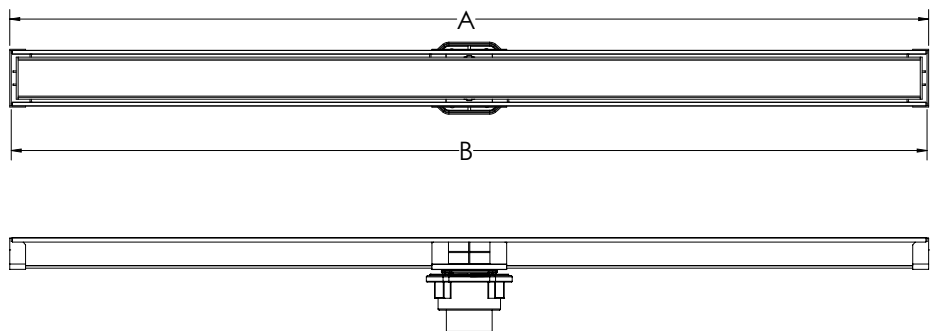
NOTE: Installer must verify all rough-in dimensions prior to installation and consult local and national codes. Conformity and compliance to local and national codes are the responsibility of the installer.

# ID Infinity Drain

S-TIF 6540

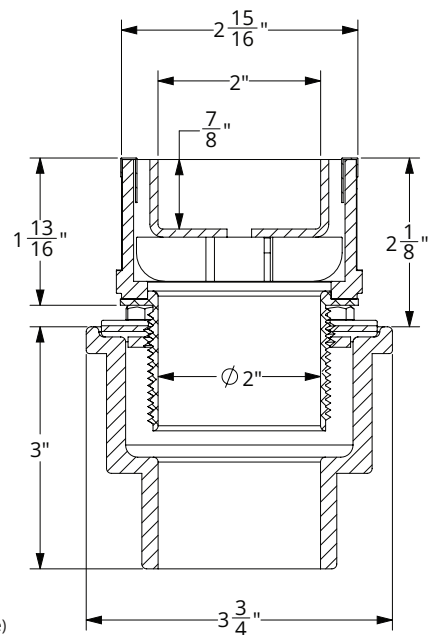
S-TIF 6548

S-TIF 6560



- a TA 65 - Tile Insert Frame Assembly
- b CT - Channel Trim
- c HB 65 - Hair Strainer
- d E 65 - PVC Stop End
- e G 65 - PVC Channel (ships as one piece)
- f S 65 - PVC Outlet Section
- g S 50 - PVC Threaded Outlet

- h 2 inch clamp down drain assembly  
 Not included in kit SKU.  
 (Material can be Cast Iron, ABS, or PVC)



SECTION A-A

| Model Number | Complete Kit Contents   | A<br>(Maximum Overall Length) | B<br>(Maximum Grate Length) |
|--------------|---|-------------------------------|-----------------------------|
| S-TIF 6540   | 1 - TA 6540 Tile Insert Frame<br>1 - G 6540 PVC Channel<br>2 - E 65 PVC Stop End<br>1 - S 50 PVC Threaded Outlet<br>1 - HMK-65-A:<br>1 - HB 65 Hair Basket<br>1 - AKEY Lift Out Key<br>2 - CT 40 Channel Trim | 40"                           | 39 7/8"                     |
| S-TIF 6548   | 1 - TA 6548 Tile Insert Frame<br>1 - G 6548 PVC Channel<br>2 - E 65 PVC Stop End<br>1 - S 50 PVC Threaded Outlet<br>1 - HMK-65-A:<br>1 - HB 65 Hair Basket<br>1 - AKEY Lift Out Key<br>2 - CT 48 Channel Trim | 48"                           | 47 7/8"                     |
| S-TIF 6560   | 1 - TA 6560 Tile Insert Frame<br>1 - G 6560 PVC Channel<br>2 - E 65 PVC Stop End<br>1 - S 50 PVC Threaded Outlet<br>1 - HMK-65-A:<br>1 - HB 65 Hair Basket<br>1 - AKEY Lift Out Key<br>2 - CT 60 Channel Trim | 60"                           | 59 7/8"                     |

## Finishes

☐ Satin Stainless (SS)
 ☐ Polished Stainless (PS)
 ☐ Oil Rubbed Bronze (ORB)
 ☐ Satin Bronze (SB)
 ☐ Matte Black (BK)

Infinity Drain  
 145 Dixon Avenue  
 Amityville, NY 11701  
 Phone: 516.767.6786  
 Fax: 516.740.3066  
 www.Infinitydrain.com

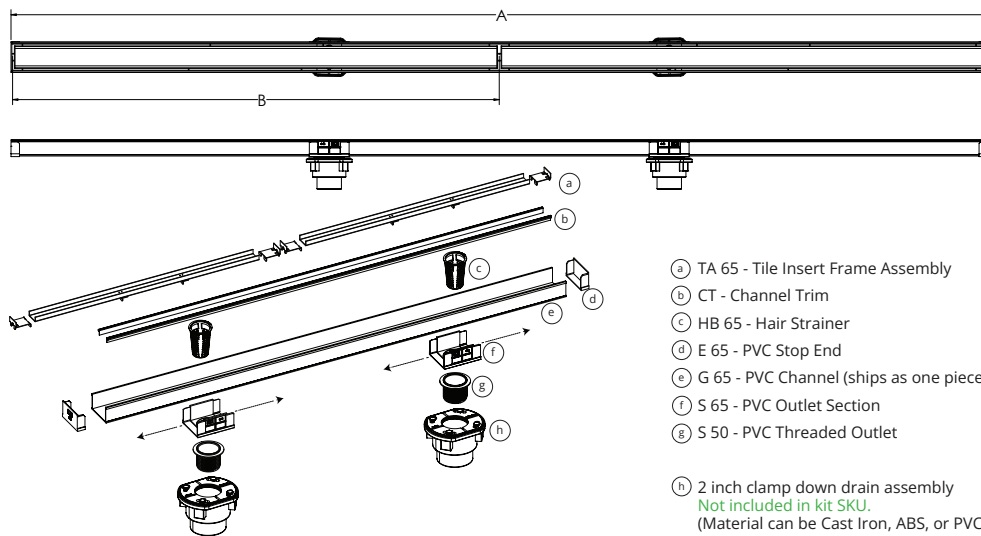


NOTE: Installer must verify all rough-in dimensions prior to installation and consult local and national codes. Conformity and compliance to local and national codes are the responsibility of the installer.

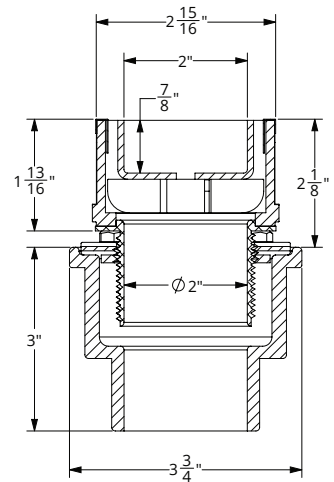
# ID Infinity Drain

S-TIF 6580

S-TIF 6596



- a TA 65 - Tile Insert Frame Assembly
- b CT - Channel Trim
- c HB 65 - Hair Strainer
- d E 65 - PVC Stop End
- e G 65 - PVC Channel (ships as one piece)
- f S 65 - PVC Outlet Section
- g S 50 - PVC Threaded Outlet
- h 2 inch clamp down drain assembly  
Not included in kit SKU.  
(Material can be Cast Iron, ABS, or PVC)



SECTION A-A

| Model Number | Complete Kit Contents  | A<br>(Maximum Overall Length) | B<br>(Maximum Grate Length) |
|--------------|--|-------------------------------|-----------------------------|
| S-TIF 6580   | 2 - TA 6540 Tile Insert Frame<br>1 - G 6580 PVC Channel<br>2 - E 65 PVC Stop End<br>2 - S 50 PVC Threaded Outlet<br>1 - HMK-65-2A:<br>2 - HB 65 Hair Basket<br>1 - AKEY Lift Out Key<br>2 - CT 80 Channel Trim     | 80"                           | 39 7/8"<br>(x 2)            |
| S-TIF 6596   | 2 - TA 6548 Stainless Steel Grate<br>1 - G 6596 PVC Channel<br>2 - E 65 PVC Stop End<br>2 - S 50 PVC Threaded Outlet<br>1 - HMK-65-2A:<br>2 - HB 65 Hair Basket<br>1 - AKEY Lift Out Key<br>2 - CT 96 Channel Trim | 96"                           | 47 7/8"<br>(x 2)            |

| Optional Components  |  | Available components for longer lengths |                       |
|----------------------|--|---|-----------------------|
| F 65                 | PVC Non-Threaded Outlet  | TA 6540                                 | 40" Tile Insert Frame |
| GJC 65               | PVC Straight Joiner Strip  | TA 6548                                 | 48" Tile Insert Frame |
| GAM 65               | PVC 90° Angle Joiner   | TA 6560                                 | 60" Tile Insert Frame |
| TNRN-P               | PVC Threaded Extension Nipple  | G 6536                                  | 36" PVC Channel       |
| UCP 2                | Universal 2" Clamping Plate  | G 6548                                  | 48" PVC Channel       |
| UCP 4                | Universal 4" Clamping Plate  | G 6560                                  | 60" PVC Channel       |
| UCP 42               | Universal Reducing Plate<br>(Adapts 4" or 3" existing throat size to 2") | G 6596                                  | 96" PVC Channel       |
| Add Clamp Down Drain |  | G 6580                                  | 80" PVC Channel       |
| CDA 22               | Clamp Down Drain ABS   | G 65108                                 | 108" PVC Channel      |
| CDI 22               | Clamp Down Drain Cast Iron   |   |                       |
| CDP 22               | Clamp Down Drain PVC   |   |                       |

NOTE: For indoor applications and outdoor applications where exposure to users without footwear is possible Channel trim (CT) is not recommended on drains over 96" or drains with configurations that include turns. The installation of channel trim on site sizeable linear drains that fall within the outlined conditions listed are at the judgement of the installer, independent of Infinity Drain, LTD.

Infinity Drain  
145 Dixon Avenue  
Amityville, NY 11701  
Phone: 516.767.6786  
Fax: 516.740.3066  
www.Infinitydrain.com



NOTE: Installer must verify all rough-in dimensions prior to installation and consult local and national codes. Conformity and compliance to local and national codes are the responsibility of the installer.