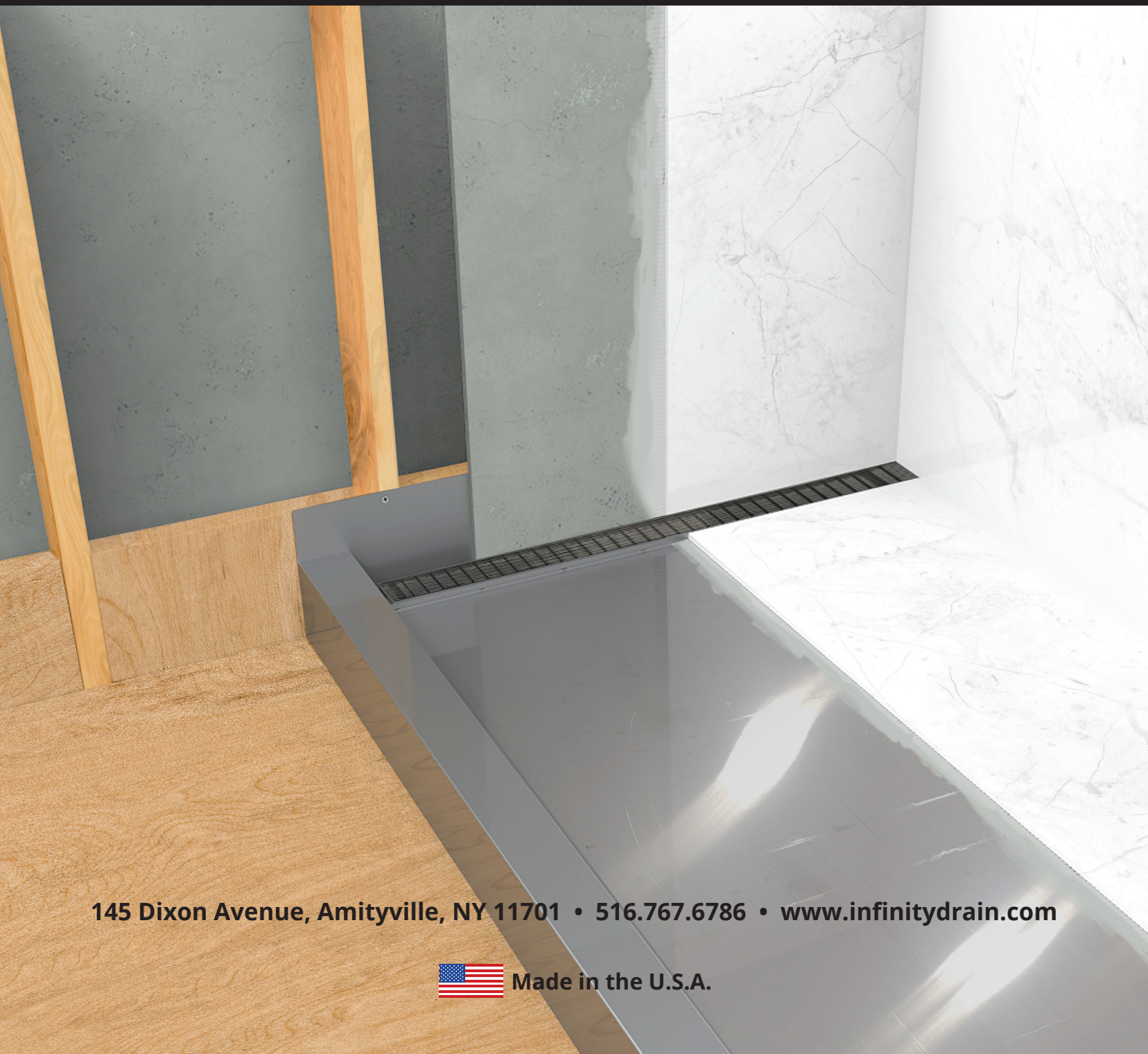




## Custom Stainless Steel Shower Base

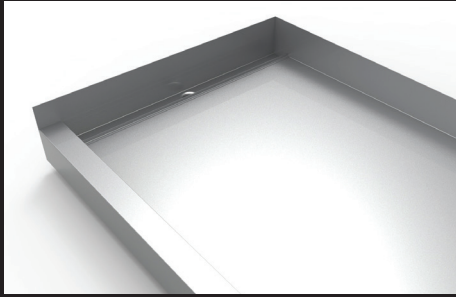


145 Dixon Avenue, Amityville, NY 11701 • 516.767.6786 • [www.infinitydrain.com](http://www.infinitydrain.com)

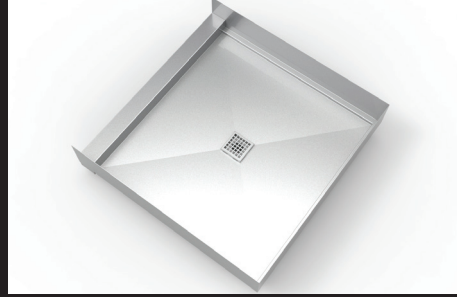


Made in the U.S.A.

# Infinity Drain® Custom Stainless Steel Shower Bases



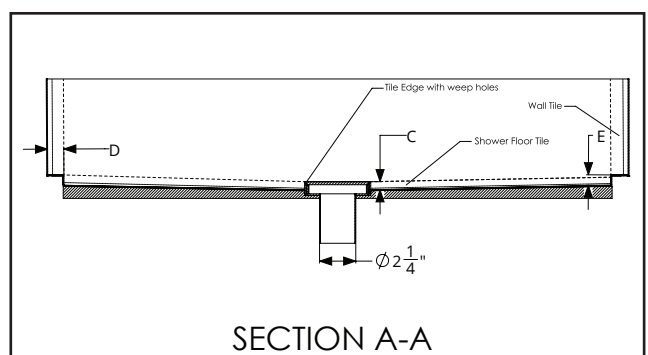
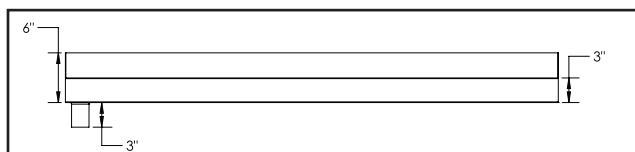
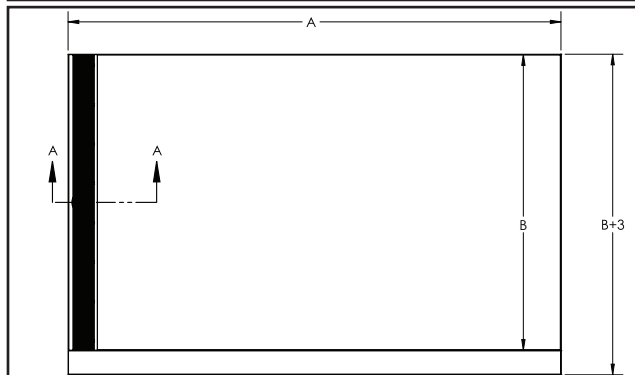
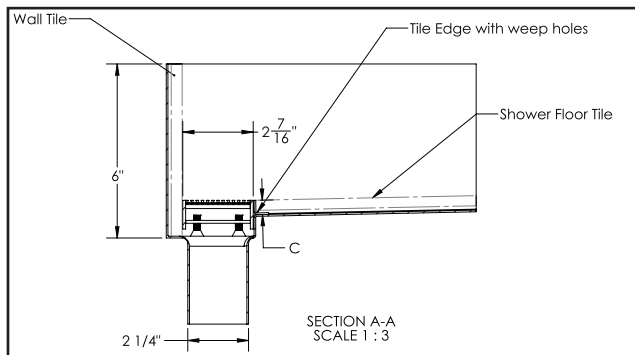
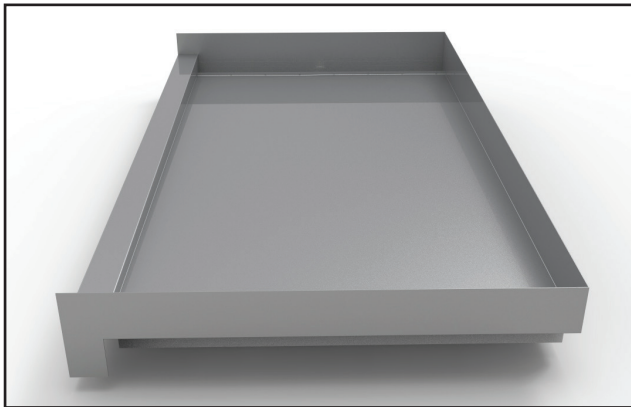
Linear drain option



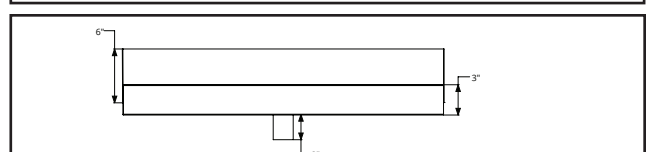
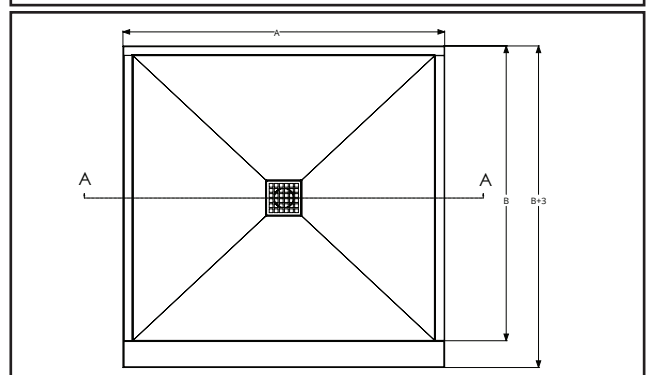
Center drain option.



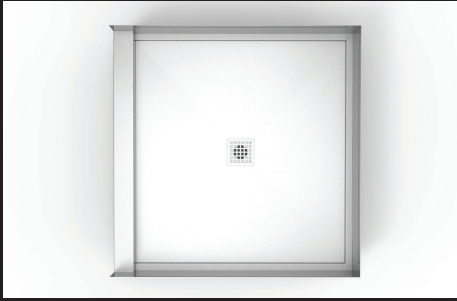
Integrated drain body.



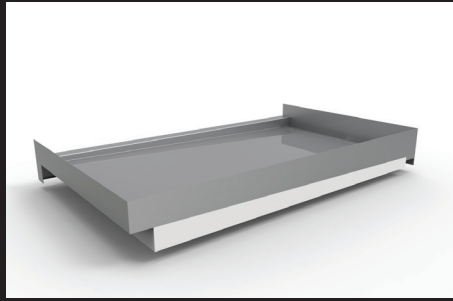
SECTION A-A



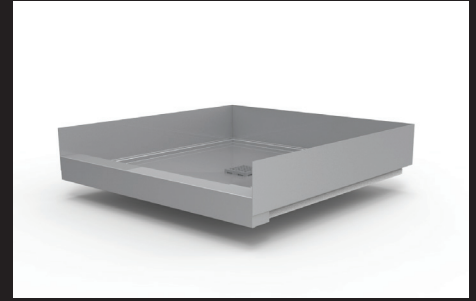
## Infinity Drain® Custom Stainless Steel Shower Bases



With or without curb.



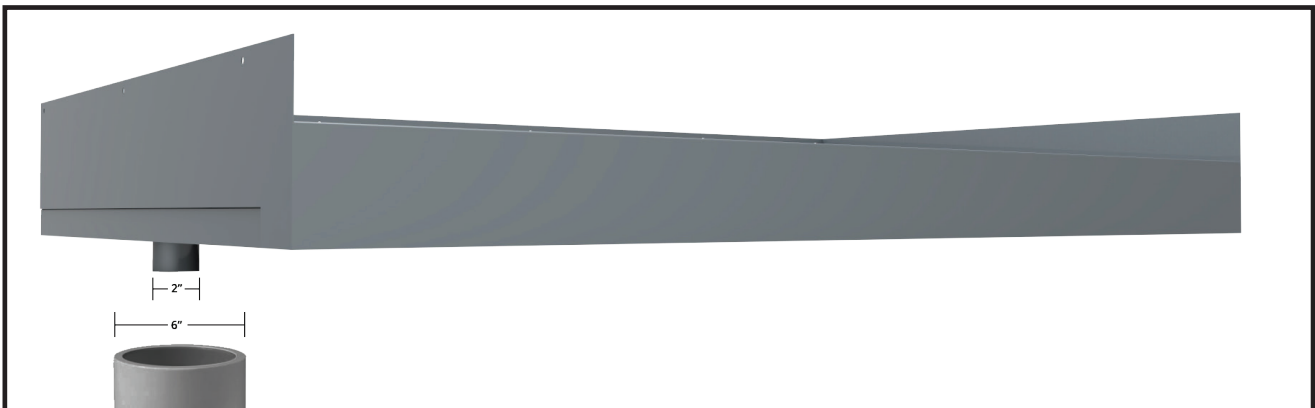
Pre-sloped.



Ready to Tile.

### Features:

- Stainless steel shower base is completely waterproof.
- Additional waterproofing on wall is optional.
- Ready to tile.
- Available with any grate style or tile insert.
- Curb or curbless option.
- Lifetime guarantee.
- Custom Sizing.
- Plumbing code compliant for use as prefabricated shower receptor.
- IAPMO tested to IAPMO PS-106-2015 standard.
- Integrated drain body.
- With a 6" sleeve on foundation, the 2" no hub connection through slab allows for 2" variance in any direction.
- Shower base sets shower framing for exact wall to wall installation.
- Factory flood tested as per UPC and IPC standards.





	1st Generation			2nd Generation		3rd Generation	4th Generation
	High Labor Cost Flexible installation, longest install  Compatible with Site Sizable (S) and Fixed Length (FX) Series			Less labor Cost Fast and flush against the wall installation  Compatible with Fixed Flange (FF) and Side Outlet (FT) Series		Low labor cost Faster install  Drain part of shower system	Lowest labor cost Fastest install  Integrated drain
	Copper Pan	Lead Pan	Vinyl Liner Pan (PVC, Rubber)	Liquid Applied Waterproofing	Fabric Waterproofing	USG Durock™ Brand Infinity Drain® Shower System	Infinity Drain Custom Stainless Steel Shower Pan
Labor Cost	\$ \$ \$ \$	\$ \$ \$ \$	\$ \$ \$	\$ \$	\$ \$	\$	\$
Length of installation							
Material Cost	\$ \$	\$	\$	\$ \$	\$ \$	\$ \$	\$ \$ \$
Ease of Installation							
Ease of coordination between trades							
Allows for wall to wall installation				*	*	*	
Allows for flush against the wall installation	**	**	**				
No mud bed needed or pre-sloped floor							
No customization needed for project installation (site measuring)							
Installation Waterproofing Warranty	?	?	?	10 yrs	10 yrs	10 yrs	Lifetime

\* Custom product may be needed.

\*\* Site modification or wall specific product may be needed.