

TD Series

TD 15 & TD 20 Installation

Parts List

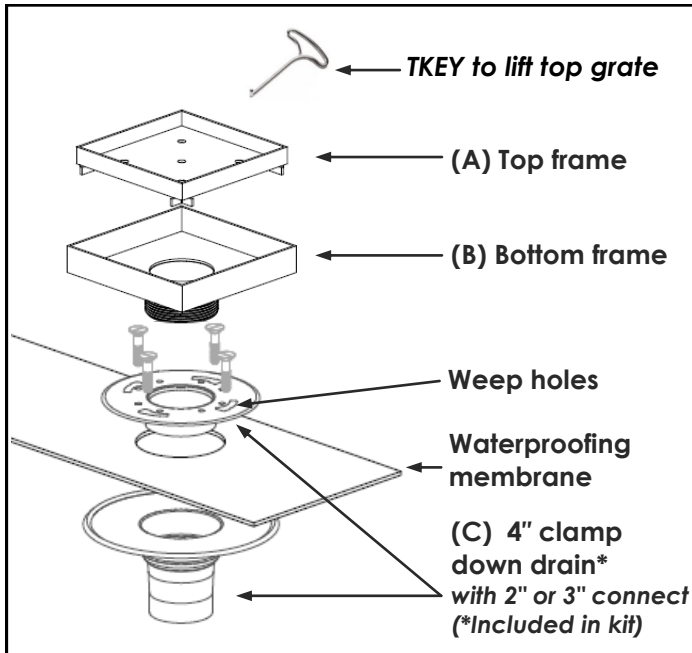


Figure 1

Installation Instructions

1. Determine clamp down drain **(C)** location. Connect to drain pipe.
2. Create a pre-slope in four directions towards drain body **(C)**. Waterproof to local code.
3. Insert bottom frame **(B)** into clamp down drain **(C)** and adjust height as needed. Allow secondary mortar bed to support bottom frame **(B)**.
4. Remove top frame **(A)** and install tile within frame, using mortar and thin set.
5. Finish floor must be 1/16" higher than top edge of bottom frame **(B)**.

Infinity Drain recommends this product be installed by a licensed contractor

Determining floor height

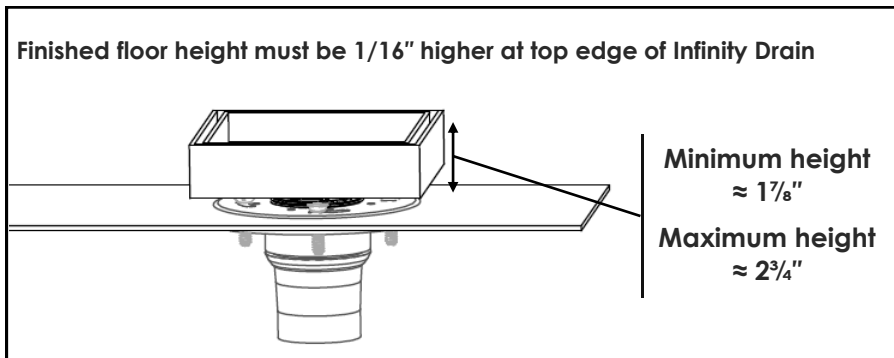
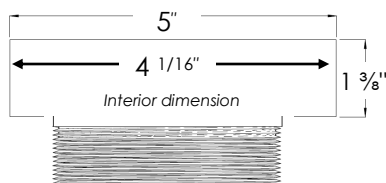
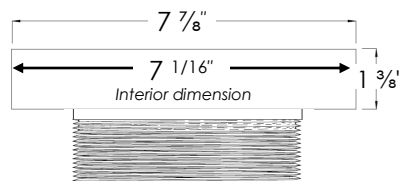


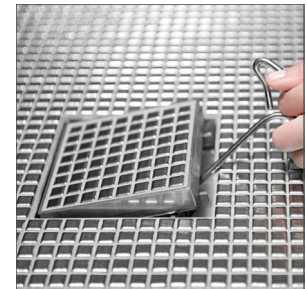
Figure 2



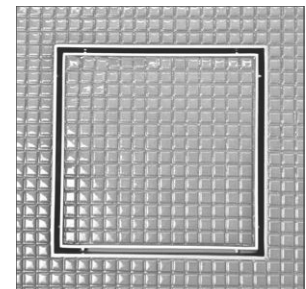
TD 15



TD 20



TD 15



TD 20