

LTD 5 Series

LT5-2, LTD5-2 Installation

Parts List

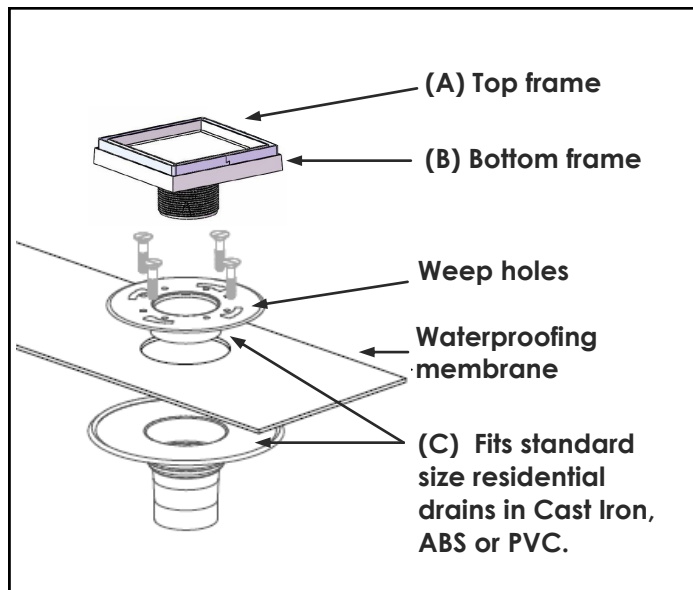


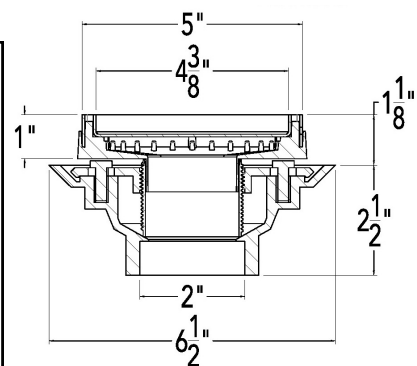
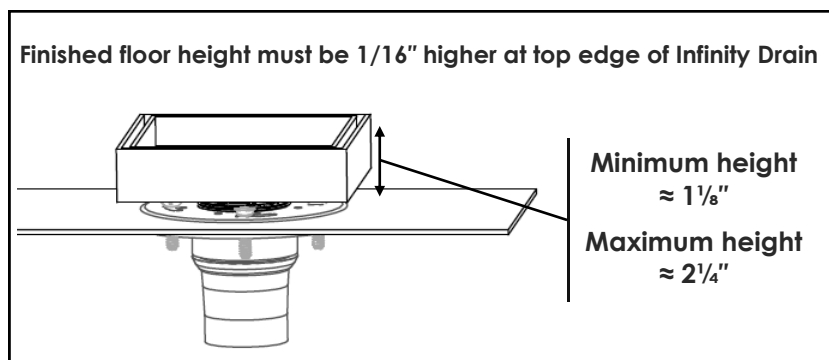
Figure 1

Installation Instructions

1. Determine clamp down drain (C) location. Connect to drain pipe.
2. Create a pre-slope in four directions towards drain body (C). Waterproof to local code.
3. Insert bottom frame (B) into clamp down drain (C) and adjust height as needed. Allow secondary mortar bed to support bottom frame (B).
4. Remove top frame (A) and install tile within frame, using mortar and thin set.
5. Finish floor must be 1/16" higher than top edge of bottom frame (B).

Infinity Drain recommends this product be installed by a licensed contractor

Determining floor height



Fits standard residential drain

Figure 2