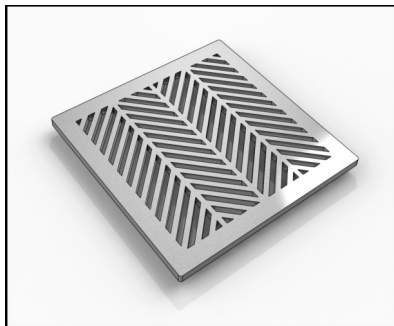
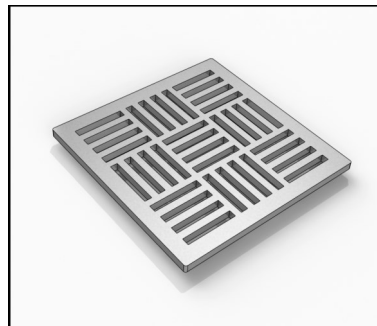


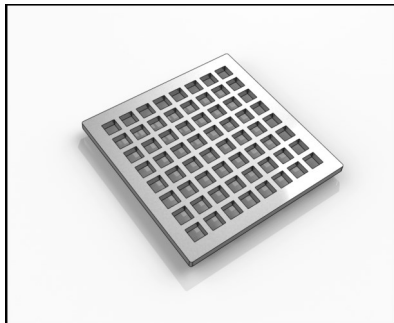
- 3/16" Thick Stainless Steel strainer
- 2" Residential Throat or 4" High Flow Throat
- Indoor or outdoor use
- Drain body (Cast Iron, PVC or ABS) with 2" or 4" throat
- Uses Hot Mop, Lead Pan, PVC Vinyl Liner, Rubber Liner (Chloraloy™) Copper Pan or Fiberglass waterproofing
- Magnetically fastening strainer
- Requires traditional 4-way floor pitch
- Integral hair catch



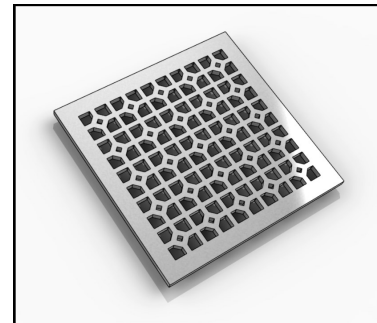
Herring Strainer



Lines Strainer



Square Strainer



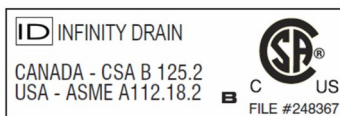
Otto Strainer

Finishes:

- Satin Stainless
- Polished Stainless
- Lifetime Oil Rubbed Bronze

Note: Installer must verify all rough-in dimensions prior to installation and consult local and national codes. Conformity and compliance to local and national codes are the responsibility of the installer.

Infinity Drain
 18 Secatoag Avenue
 Port Washington, NY 11050
 Phone: 516.767.6786
 Fax: 516.740.3066
 www.InfinityDrain.com



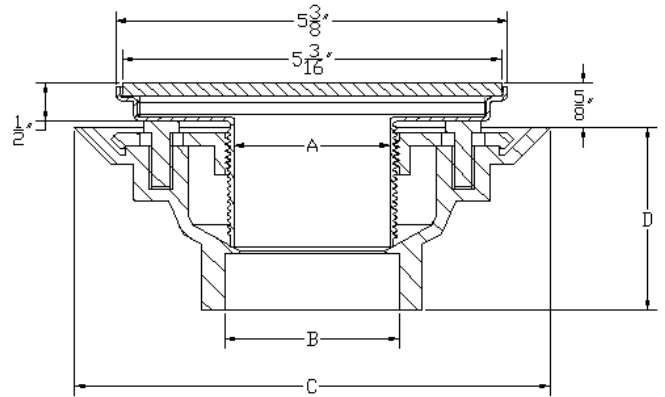
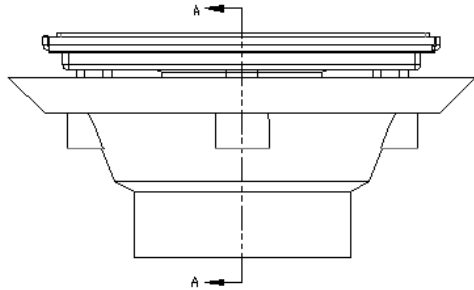
Components: (Each Sold Separately)

- G 1 Herring Strainer
- G 2 Line Strainer
- G 3 Square Strainer
- G 4 Otto Strainer
- T 2 Residential Stainless 2" Throat
- T 4 High Flow Stainless 4" Throat
- HS 2 2" Residential Hair Catch
- HS 4 4" High Flow Hair Catch
- CDI 22 2" Clamp Down Drain Cast Iron with 2" No Hub Outlet
- CDIT 22 2" Clamp Down Drain Cast Iron with 2" Threaded outlet
- CDA 22 2" Clamp Down Drain ABS with 2" Outlet
- CDP 22 2" Clamp Down Drain PVC with 2" Outlet
- CDI 42 4" Clamp Down Drain Cast Iron with 2" No Hub Outlet
- CDIT 42 4" Clamp Down Drain Cast Iron with 2" Threaded outlet
- CDA 42 4" Clamp Down Drain ABS with 2" Outlet
- CDP 42 4" Clamp Down Drain PVC with 2" Outlet
- CDI 43 4" Clamp Down Drain Cast Iron with 3" No Hub Outlet
- CDIT 43 4" Clamp Down Drain Cast Iron with 3" Threaded outlet
- CDA 43 4" Clamp Down Drain ABS with 3" Outlet
- CDP 43 Clamp Down Drain PVC with 3" Outlet

Drain Assemblies: (Includes)

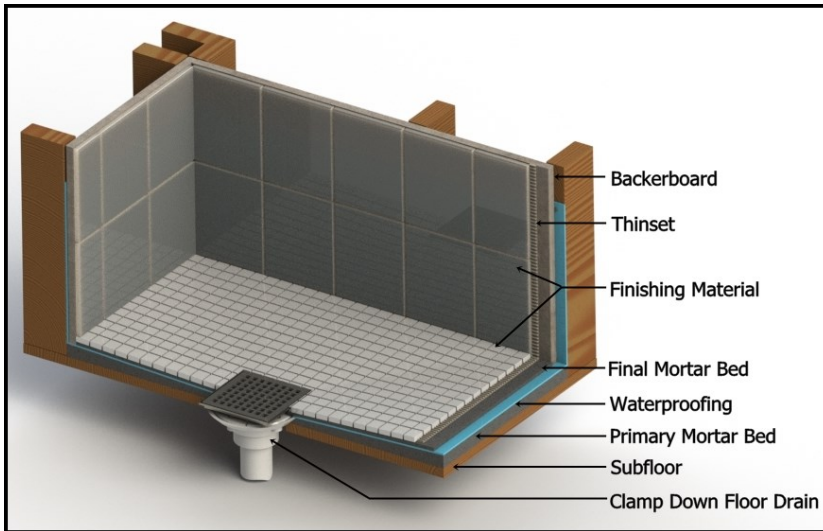
- DI 22 :** CDI 22 | T 2 | HS 2
- DT 22 :** CDIT 22 | T 2 | HS 2
- DA22 :** CDA 22 | T 2 | HS 2
- DP 22 :** CDP 22 | T 2 | HS 2
- DI 42 :** CDI 42 | T 4 | HS 4
- DT 42 :** CDIT 42 | T 4 | HS 4
- DA42 :** CDA 42 | T 4 | HS 4
- DP 42 :** CDP 42 | T 4 | HS 4
- DI 43 :** CDI 43 | T 4 | HS 4
- DT 43 :** CDIT 43 | T 4 | HS 4
- DA43 :** CDA 43 | T 4 | HS 4
- DP 43 :** CDP 43 | T 4 | HS 4

G Series Specifications



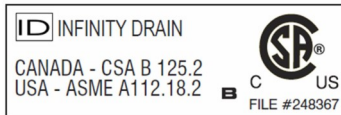
SECTION A-A

Installation G Series



Model #	A	B	C	D
DI 22	2"	2"	6 1/2"	2 1/2"
DT 22	2"	2"	6 1/2"	2 1/2"
DA 22	2"	2"	6 1/2"	2 1/2"
DP 22	2"	2"	6 1/2"	2 1/2"
DI 42	4"	2"	8"	4"
DT 42	4"	2"	8"	4"
DA 42	4"	2"	8"	4"
DP 42	4"	2"	8"	4"
DI 43	4"	3"	8"	4"
DT 43	4"	3"	8"	4"
DA 43	4"	3"	8"	4"
DP 43	4"	3"	8"	4"

Infinity Drain
 18 Secatoag Avenue
 Port Washington, NY 11050
 Phone: 516.767.6786
 Fax: 516.740.3066
 www.InfinityDrain.com



Note: Installer must verify all rough-in dimensions prior to installation and consult local and national codes. Conformity and compliance to local and national codes are the responsibility of the installer.