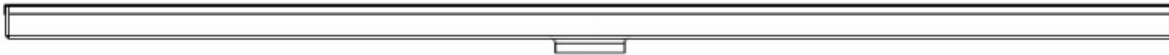
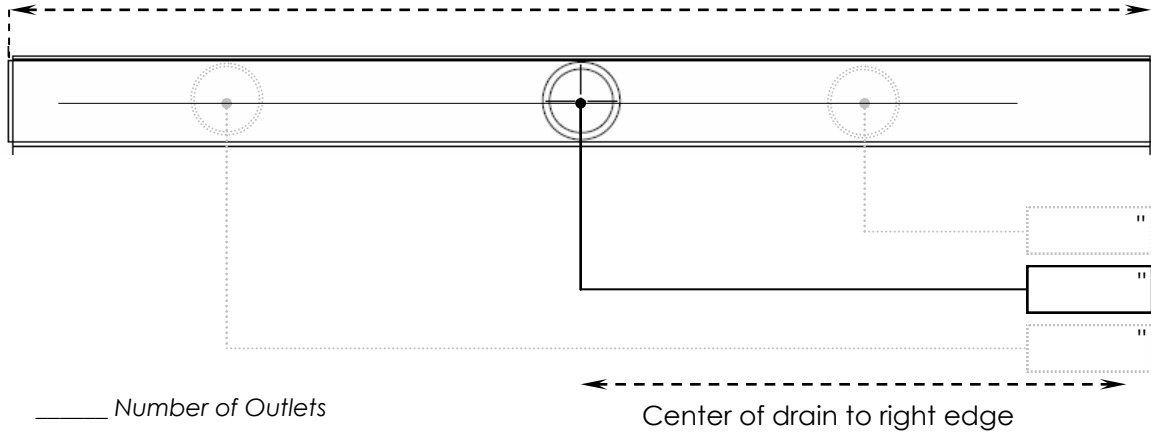
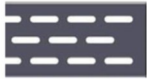

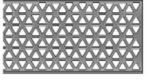





Overall Length of Drain* _____ "



Grate choice:

	FXED 65 _____
	FXDG 65 _____
	FXMN 65 _____
	FXAS 65 _____
	FXAS 125 _____
	FXTIF 65 _____

Grate finish:

Satin Stainless	_____
Polished Stainless	_____
Oil Rubbed Bronze	_____
Matte White	_____
Matte Black	_____

RUSH: YES _____ **NO** _____

Rush applicable to only length and outlet modifications in Satin Stainless and Polished Stainless.

Rush charge applied per set-up. Turnaround is 5 business days, plus packaging and shipping.

Job Name: _____ Location: _____

Customer: _____ Purchase Order: _____

Approved by: _____ Date: _____

*Overall length is the outside channel dimension. Grate will be 1/8" shorter for removal. See standard FX specifications for other dimensions.

