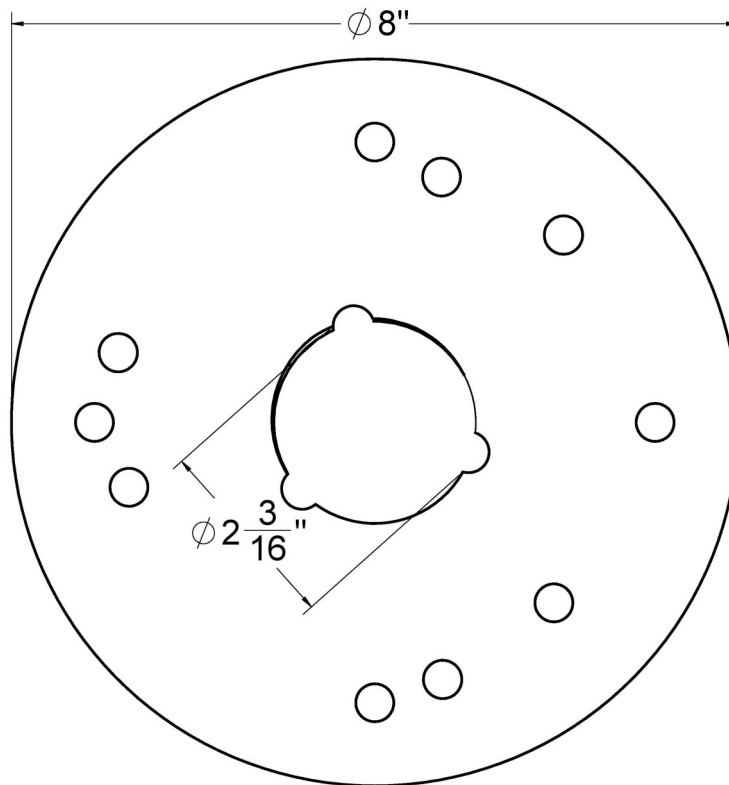
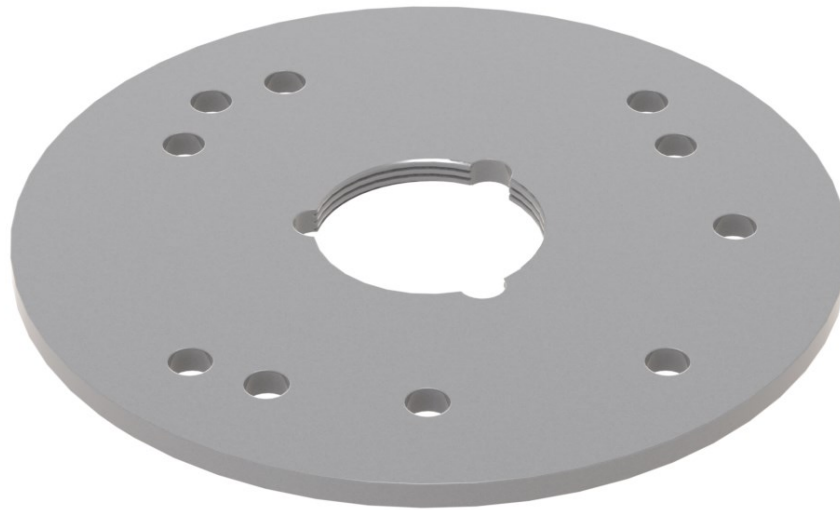


UCP 42 Specifications



Universal 4" Clamping Plate, 8" overall diameter x 2" throat.

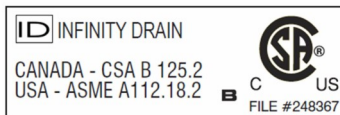
Allows adaptation to Zurn, Smith, Wade, Watts, Mifab, and Josam type 8" diameter clamping drain bodies.

For use with the following Infinity Drain models:

LTD5-2, WW5, L 5-2, TD 50, S-AG 38, S-DG 38, S-AG 65, S-DG 65, S-TIF 65, S-AG 100, S-AS 65, S-DGAS 65, S-TIFAS 65, FXED 65, FXDG 65, FXMN 65, FXAS 65, and FXTIF 65

Infinity Drain

145 Dixon Avenue
Amityville, NY 11701
Phone: 516.767.6786
Fax: 516.740.3066
www.InfinityDrain.com



Note: Installer must verify all rough-in dimensions prior to installation and consult local and national codes. Conformity and compliance to local and national codes