



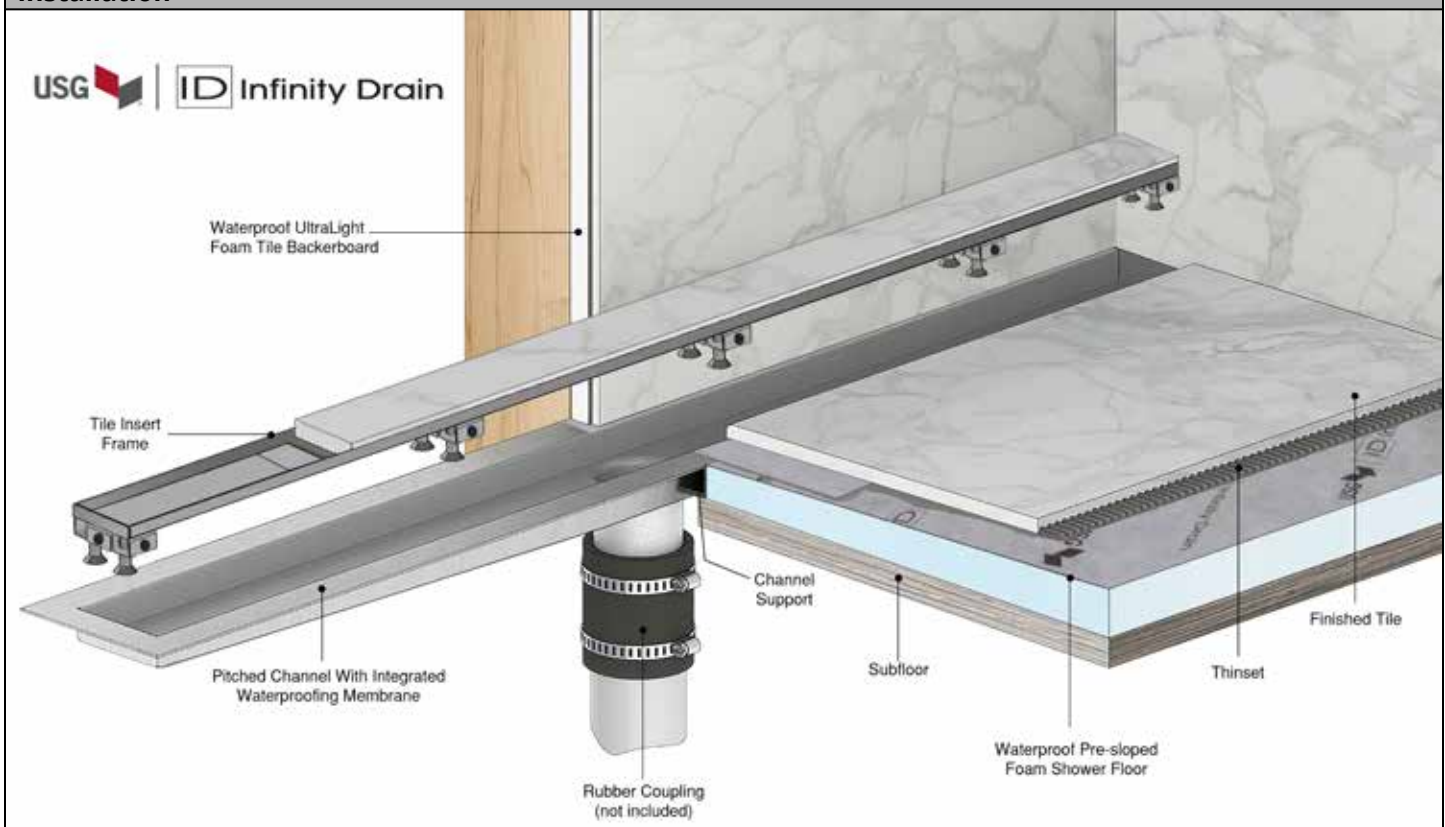
USG DUROCK™ Brand Infinity Drain™ Tile Insert Linear Drain Kit

Features

- Includes tile insert frame, pitched channel, channel support, hair strainer and lift-out key
- ABS channel support easily fastens to the subfloor and supports channel
- 304L 16 Gauge Stainless Steel channel
- 304L 16 Gauge Stainless Steel Tile Insert Frame
- Integrated waterproofing membrane
- Flow rate - 9 gpm per outlet
 - Flow rate measured at outlet only. Measurement does not account for water in channel or sheeting on shower floor.



Installation



Infinity Drain
145 Dixon Avenue
Amityville, NY 11701
Phone: 516.767.6786
Fax: 516.740.3066
www.infinitydrain.com

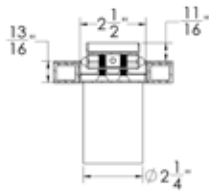
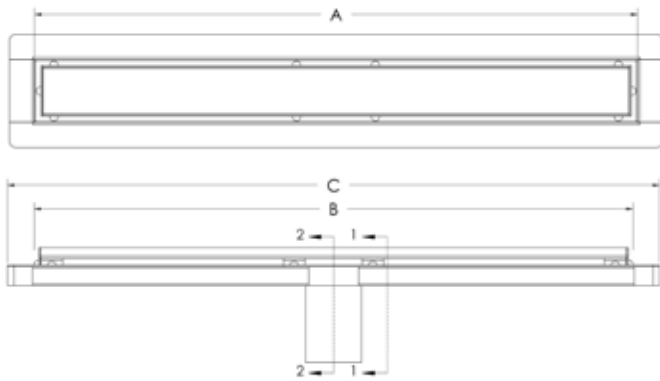


USG | ID Infinity Drain
Light Duty
Made in the U.S.A.

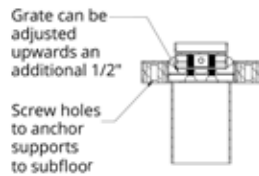


NOTE: Installer must verify all rough-in dimensions prior to installation and consult local and national codes. Conformity and compliance to local and national codes are the responsibility of the installer.

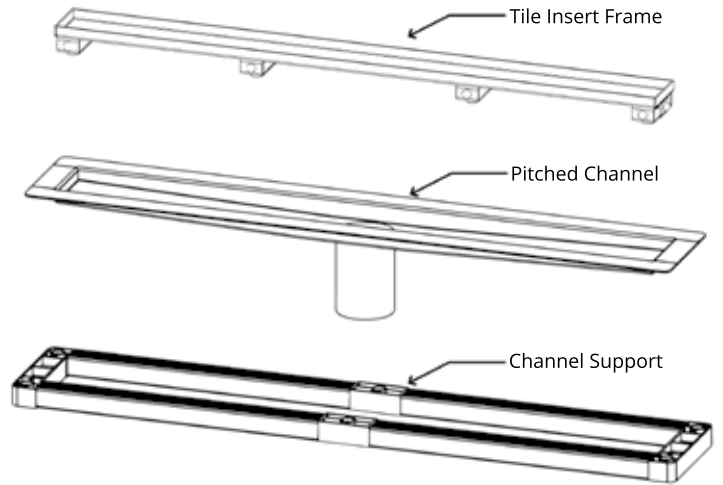
LINEAR DRAIN KIT



SECTION 1-1



SECTION 2-2



A (Overall Inside Length)	Linear Drain Kit Contents	B (Frame Length)	C (Overall Outside Length)	Finish	Linear Drain Kit Model Number
24"	1 - Tile Insert Stainless Steel Frame 1 - Pitched Channel with Waterproofing 1 - Channel Support 1 - Hair Strainer 1 - Lift Out Key	23 7/8"	26"	Satin Stainless Polished Stainless	171221 <input type="checkbox"/> 171222 <input type="checkbox"/>
30"	1 - Tile Insert Stainless Steel Frame 1 - Pitched Channel with Waterproofing 1 - Channel Support 1 - Hair Strainer 1 - Lift Out Key	29 7/8"	32"	Satin Stainless Polished Stainless	171225 <input type="checkbox"/> 171227 <input type="checkbox"/>
36"	1 - Tile Insert Stainless Steel Frame 1 - Pitched Channel with Waterproofing 1 - Channel Support 1 - Hair Strainer 1 - Lift Out Key	35 7/8"	38"	Satin Stainless Polished Stainless	171230 <input type="checkbox"/> 171231 <input type="checkbox"/>
42"	1 - Tile Insert Stainless Steel Frame 1 - Pitched Channel with Waterproofing 1 - Channel Support 1 - Hair Strainer 1 - Lift Out Key	41 7/8"	44"	Satin Stainless Polished Stainless	171234 <input type="checkbox"/> 171235 <input type="checkbox"/>
48"	1 - Tile Insert Stainless Steel Frame 1 - Pitched Channel with Waterproofing 1 - Channel Support 1 - Hair Strainer 1 - Lift Out Key	47 7/8"	50"	Satin Stainless Polished Stainless	171238 <input type="checkbox"/> 171239 <input type="checkbox"/>
60"	1 - Tile Insert Stainless Steel Frame 1 - Pitched Channel with Waterproofing 1 - Channel Support 1 - Hair Strainer 1 - Lift Out Key	59 7/8"	62"	Satin Stainless Polished Stainless	171321 <input type="checkbox"/> 171322 <input type="checkbox"/>

Infinity Drain
145 Dixon Avenue
Amityville, NY 11701
Phone: 516.767.6786
Fax: 516.740.3066
www.Infinitydrain.com



USG | **ID** Infinity Drain
Light Duty
Made in the U.S.A.



NOTE: Installer must verify all rough-in dimensions prior to installation and consult local and national codes. Conformity and compliance to local and national codes are the responsibility of the installer.

DRAIN KIT BY COMPONENT

Tile Insert Frame

Corresponding Kit Size	Length	Width	Height	Finish	Grate only Model Number
24"	23 7/8"	2 1/2"	1"	Satin Stainless Polished Stainless	171285 171286
30"	29 7/8"	2 1/2"	1"	Satin Stainless Polished Stainless	171289 171290
36"	35 7/8"	2 1/2"	1"	Satin Stainless Polished Stainless	171293 171294
42"	41 7/8"	2 1/2"	1"	Satin Stainless Polished Stainless	171297 171298
48"	47 7/8"	2 1/2"	1"	Satin Stainless Polished Stainless	171313 171314
60"	59 7/8"	2 1/2"	1"	Satin Stainless Polished Stainless	171315 171316

Pitched Channel

Corresponding Kit Size	Overall Outside Length	Overall Outside Width	Height	Grate only Model Number
24"	26"	4 1/2"	13/16"	171287
30"	32"	4 1/2"	13/16"	171288
36"	38"	4 1/2"	13/16"	171291
42"	44"	4 1/2"	13/16"	171292
48"	50"	4 1/2"	13/16"	171295
60"	62"	4 1/2"	13/16"	171296

Channel Support

Corresponding Kit Size	Overall Outside Length	Overall Outside Width	Height	Grate only Model Number
24"	26"	4 1/2"	3/4"	171335
30"	32"	4 1/2"	3/4"	171336
36"	38"	4 1/2"	3/4"	171337
42"	44"	4 1/2"	3/4"	171338
48"	50"	4 1/2"	3/4"	171339
60"	62"	4 1/2"	3/4"	171340

Additional Components

Description	Model Number
2" Hair Strainer	171325
Lift-Out Key	171326

Care & Maintenance

The tile insert stainless steel frames are made of 304L stainless steel. This material is non-porous, hygienic, rust-free and extremely durable. Bar Keepers Friend® and Soft Scrub® are commonly available products that can be used to protect and clean your Satin Stainless drain cover. For stains that have been left for an excessive amount of time, stronger cleaning agents such as Compound 302® may be needed. For Polished Stainless and other finishes we recommend a mild soap and a soft cloth for cleaning. DO NOT use any abrasive cleaners, scrub pads or allow household cleaning agents, such as bleach, to sit on the drain cover for a long period of time. Stainless steel does not rust. External factors, such as contamination from other highly ferrous metals, built up road salt, sea salt, or chlorine may have caused "surface" rust which can be removed using Barkeepers Friend®, Soft Scrub® with Bleach, or Compound 302®. Always follow the directions on the bottle. Follow proper maintenance procedures to prevent excessive surface rust. In areas of frequent exposure to salt, chlorine, and other chemical compounds, maintenance of the stainless grates should be performed at least 2-3 times per year.

Infinity Drain
145 Dixon Avenue
Amityville, NY 11701
Phone: 516.767.6786
Fax: 516.740.3066
www.infinitydrain.com



USG | **ID** Infinity Drain
Light Duty
Made in the U.S.A.



NOTE: Installer must verify all rough-in dimensions prior to installation and consult local and national codes. Conformity and compliance to local and national codes are the responsibility of the installer.