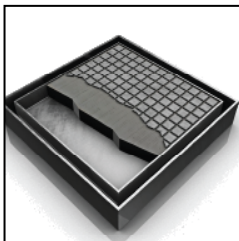


ID Infinity Drain



TD 15 Series TILE DRAIN SUBMITTAL

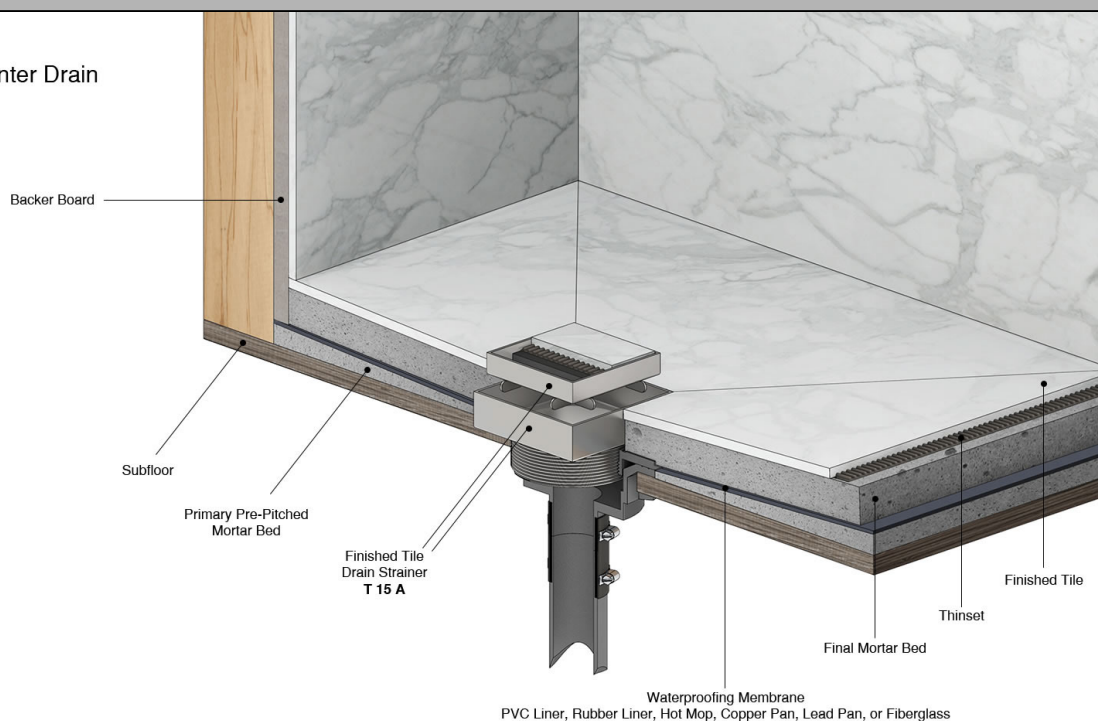
- TD 15-2I SS Clamp Down Drain Cast Iron
- TD 15-3I PS Clamp Down Drain Cast Iron
- TD 15-2A SS Clamp Down Drain ABS
- TD 15-3A PS Clamp Down Drain ABS
- TD 15-2P SS Clamp Down Drain PVC
- TD 15-3P PS Clamp Down Drain PVC

Features

- 12 gauge 316 Stainless Steel Frame and Body
- ¾" depth inside frame for material
- ¼" drainage gap
- -Indoor or outdoor use
- Commercial grade large drain body (Cast Iron, PVC or ABS) with 4" throat
- Grate can be removed completely for cleaning
- Requires traditional 4-way floor pitch
- Flow rate 9 GPM with 2" outlet
- Flow rate 21 GPM with 3" outlet

Installation

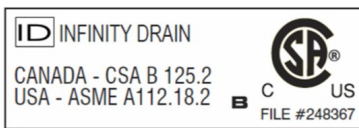
TD Center Drain
TD 15



Care & Maintenance

TD 15-3 center drains are made of 304L stainless steel. This material is non-porous, hygienic, rust-free and extremely durable. Bar Keepers Friend® and Soft Scrub® are commonly available products that can be used to protect and clean your Satin Stainless drain cover. For stains that have been left for an excessive amount of time, stronger cleaning agents such as Compound 302® may be needed. For Polished Stainless and Oil Rubbed Bronze we recommend a mild soap and a soft cloth for cleaning. DO NOT use any abrasive cleaners, scrub pads or allow household cleaning agents, such as bleach, to sit on the drain cover for a long period of time. Stainless steel does not rust. External factors, such as contamination from other highly ferrous metals, built up road salt, sea salt, or chlorine may have caused "surface" rust which can be removed using Barkeepers Friend®, Soft Scrub® with Bleach, or Compound 302®. Always follow the directions on the bottle. Follow proper maintenance procedures to prevent excessive surface rust. In areas of frequent exposure to salt, chlorine, and other chemical compounds, maintenance of the stainless grates should be performed at least 2-3 times per year.

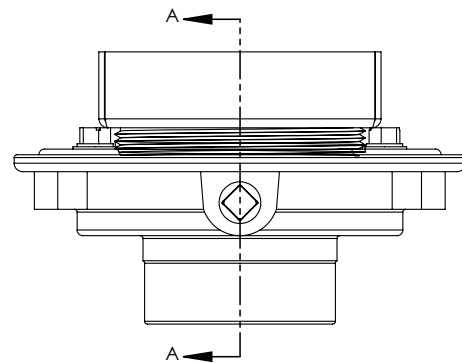
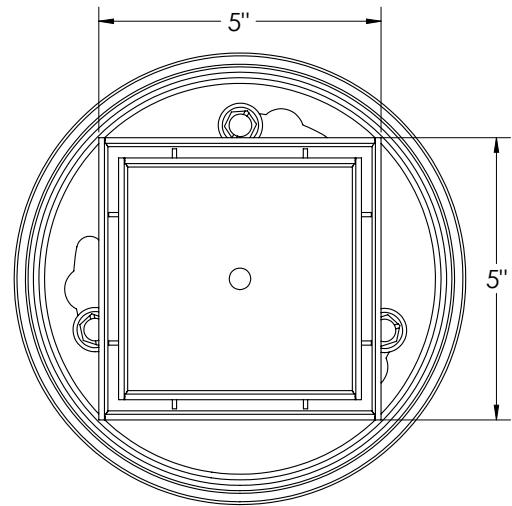
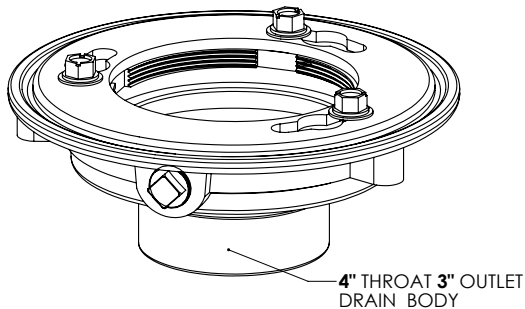
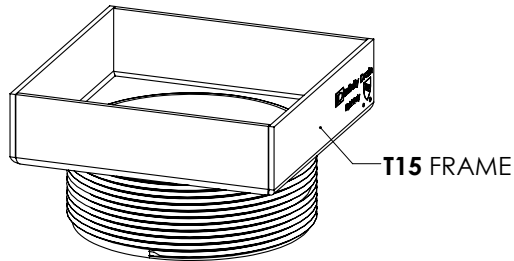
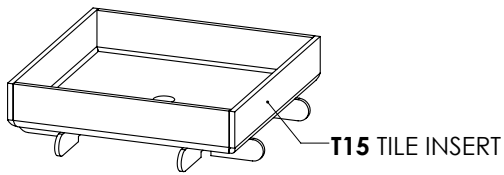
Infinity Drain
145 Dixon Avenue
Amityville, NY 11701
Phone: 516.767.6786
Fax: 516.740.3066
www.infinitydrain.com



NOTE: Installer must verify all rough-in dimensions prior to installation and consult local and national codes. Conformity and compliance to local and national codes are the responsibility of the installer.

TD 15-3 Specifications

ID Infinity Drain



TD 15-3I

8" x 8" Kit with Cast Iron Drain Body No Hub Outlet

(5" L x 5" W x 1 5/16" H)

1 - T 15 A Tile Drain Strainer

1 - CDI 43 Clamp Down Drain Cast Iron

TD 15-3A

8" x 8" Kit with ABS Drain Body

(5" L x 5" W x 1 5/16" H)

1 - T 15 A Tile Drain Strainer

1 - CDA 43 Clamp Down ABS

TD 15-3P

8" x 8" Kit with PVC Drain Body

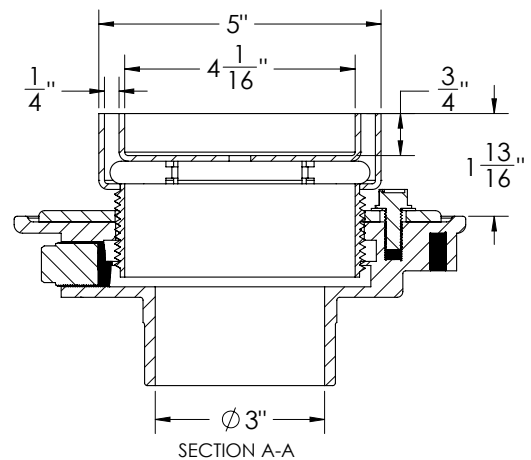
(5" L x 5" W x 1 5/16" H)

1 - T 15 A Tile Drain Strainer

1 - CDP 43 Clamp Down PVC

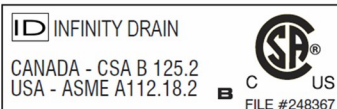
Finishes:

- ___ Satin Stainless
- ___ Polished Stainless
- ___ Satin Bronze



Infinity Drain

145 Dixon Avenue
Amityville, NY 11701
Phone: 516.767.6786
Fax: 516.740.3066
www.Infinitydrain.com



Note: Installer must verify all rough-in dimensions prior to installation and consult local and national codes. Conformity and compliance to local and national codes are the responsibility of the installer.