

# TA 65 Specifications

**ID** Infinity Drain

## TA 65:

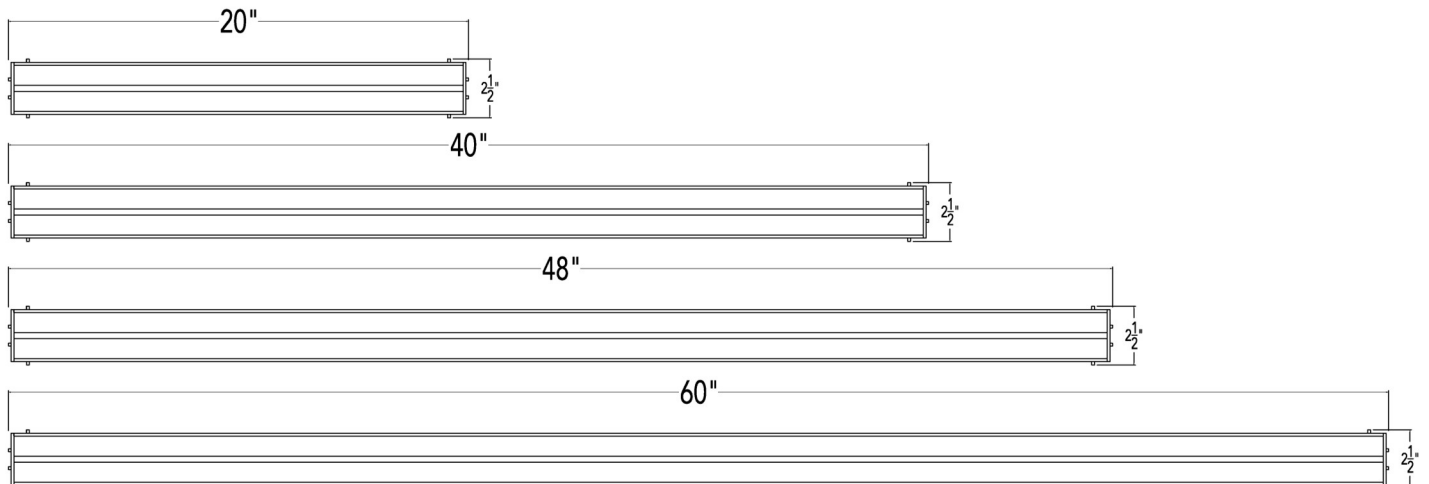
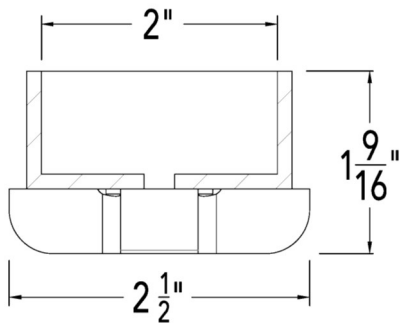
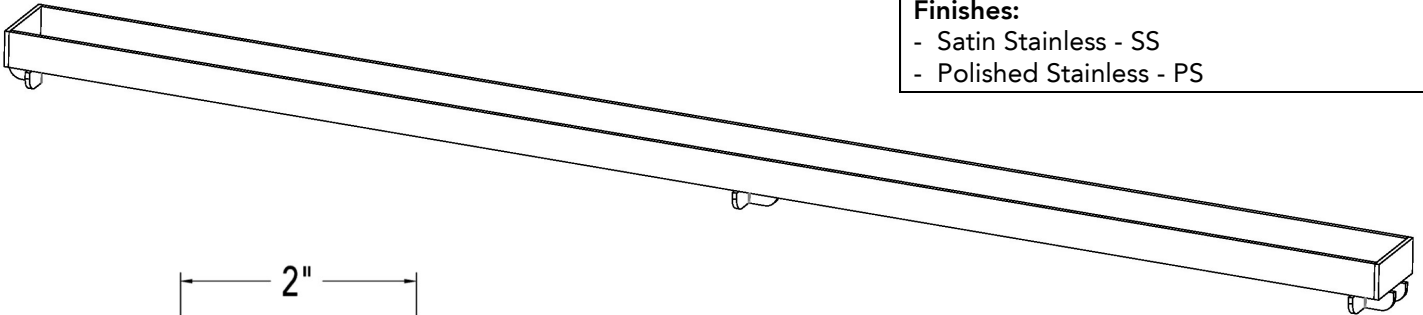
- Tile insert frame for S-TIF 65, S-TIFAS 65, S-TIFAS 99, FXTIF 65, TD 50
- 12 gauge, 316 stainless steel
- Accepts flooring material up to  $\frac{3}{4}$ " in thickness

## Models (overall dimension):

- TA 6520: 19-7/8" L x 2-1/2" W x 1-9/16" H
- TA 6540: 39-7/8" L x 2-1/2" W x 1-9/16" H
- TA 6548: 47-7/8" L x 2-1/2" W x 1-9/16" H
- TA 6560: 59-7/8" L x 2-1/2" W x 1-9/16" H

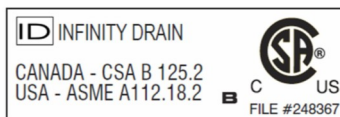
## Finishes:

- Satin Stainless - SS
- Polished Stainless - PS



## Infinity Drain

145 Dixon Avenue  
Amityville, NY 11701  
Phone: 516.767.6786  
Fax: 516.740.3066  
www.InfinityDrain.com



**Note:** Installer must verify all rough-in dimensions prior to installation and consult local and national codes. Conformity and compliance to local and national codes are the responsibility of the installer.