

TD 50 Series

ID Infinity Drain

TD 50 | Tile Drain Series

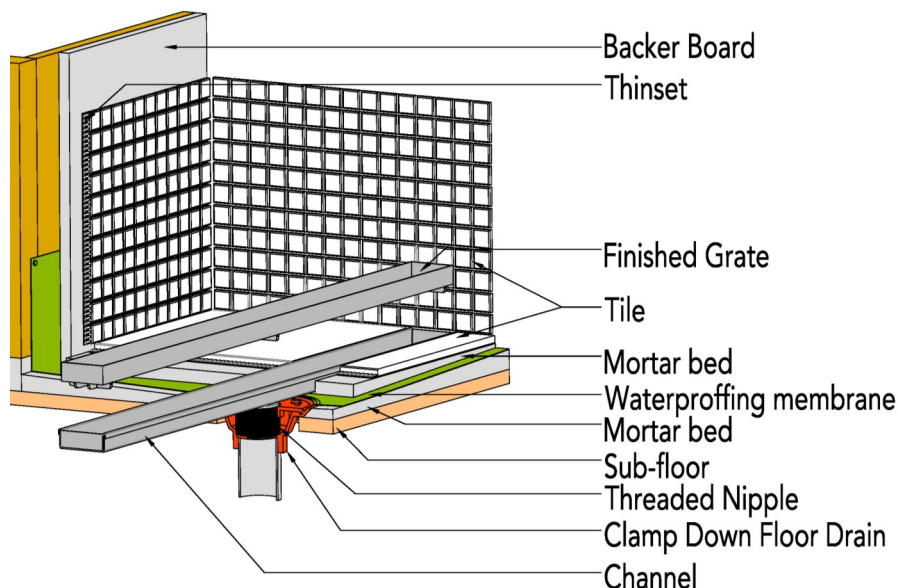
- 12 gauge 316 Stainless Steel Frame and Body
- Incorporates tile or solid surface material within the grate frame
- ¾" depth inside frame for material
- ¼" drainage gap
- Indoor or outdoor use
- Works with 2" clamp down floor drain with 2" throat (strainer size)
- Uses Hot Mop, Lead Pan, PVC Vinyl Liner, Rubber Liner (Chloraloy™), Copper Pan or Fiberglass waterproofing
- Grate can be removed completely for cleaning
- Flow rate 9 GPM per outlet*

Finishes:

- ____ Satin Stainless
- ____ Polished Stainless



Installation (TD) Center Drain



Complete Kits:

TD 50-2I SS	Clamp Down Drain Cast Iron
TD 50-2I PS	Clamp Down Drain Cast Iron
TD 50-2A SS	Clamp Down Drain ABS
TD 50-2A PS	Clamp Down Drain ABS
TD 50-2P SS	Clamp Down Drain PVC
TD 50-2P PS	Clamp Down Drain PVC

Components:

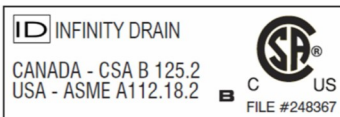
TA 6520	20" Stainless Steel Grate
IC 6520	20" Stainless Steel Channel
TNAS	Stainless Steel Threaded Nipple
CDI 22	Clamp Down Drain Cast Iron
CDP 22	Clamp Down Drain PVC
CDA 22	Clamp Down Drain ABS
TKEY	Lift Out Key

Optional Components:

TNRN	Stainless Steel Threaded Nipple, (3" extension)
UCP 2	Universal 2" Clamping Plate
UCP 4	Universal 4" Clamping Plate
ERB	Eccentric Reducer Bushing 4" x 2"

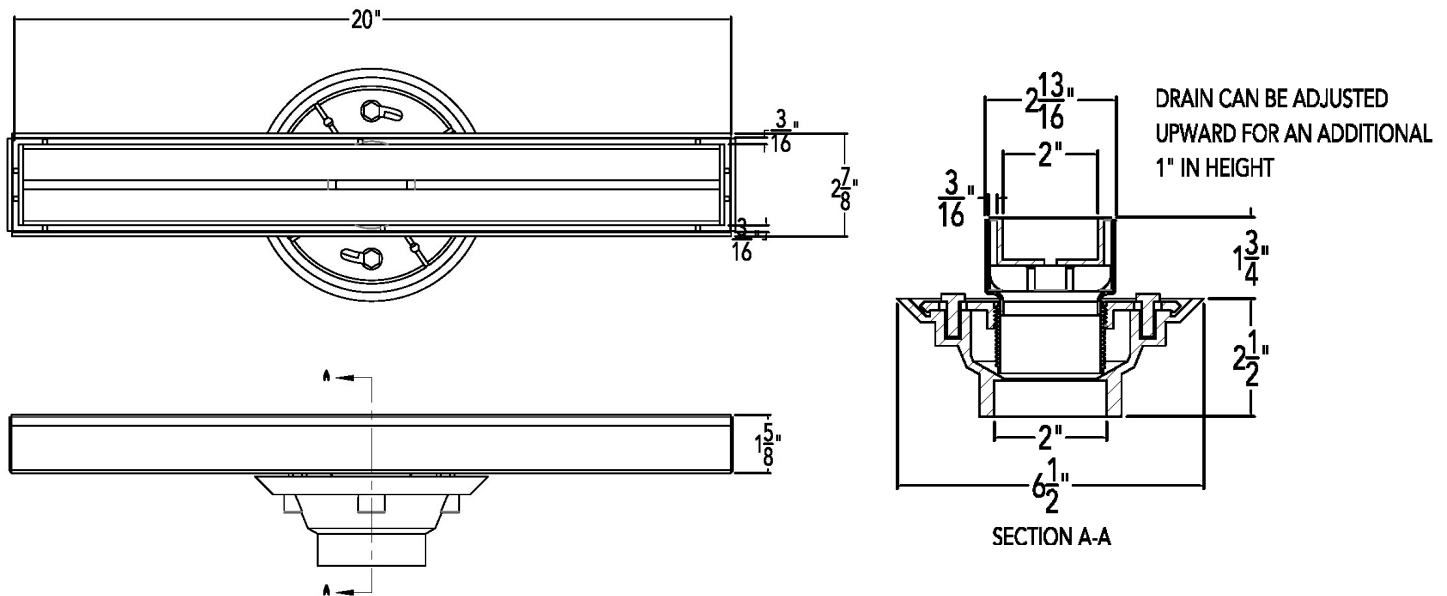
Infinity Drain

18 Secatoag Avenue
Port Washington, NY 11050
Phone: 516.767.6786
Fax: 516.740.3066
www.InfinityDrain.com



Note: Installer must verify all rough-in dimensions prior to installation and consult local and national codes. Conformity and compliance to local and national codes are the responsibility of the installer.

TD 50-2 Specifications



TD 50-2I

20" x 3" Kit with Cast Iron Drain Body

No Hub Outlet

(20" L x 3" W x 1 11/16" H)

- 1 - TA 6520 Grate
- 1 - IC 6520 Channel
- 1 - CDI 22 Clamp Down Drain Cast Iron

TD 50-2A

20" x 3" Kit with ABS Drain Body

No Hub Outlet

(20" L x 3" W x 1 11/16" H)

- 1 - TA 6520 Grate
- 1 - IC 6520 Channel
- 1 - CDA 22 Clamp Down Drain ABS

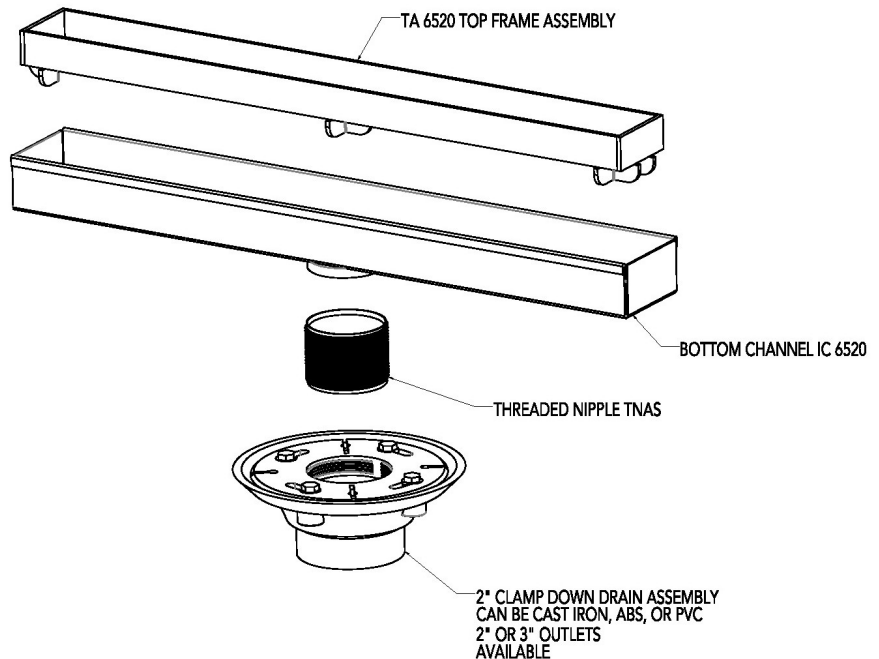
TD 50-2P

20" x 3" Kit with PVC Drain Body

No Hub Outlet

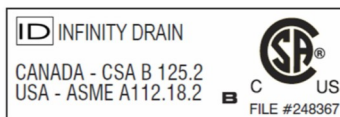
(20" L x 3" W x 1 11/16" H)

- 1 - TA 6520 Grate
- 1 - IC 6520 Channel
- 1 - CDP 22 Clamp Down Drain PVC



Infinity Drain

18 Secatoag Avenue
Port Washington, NY 11050
Phone: 516.767.6786
Fax: 516.740.3066
www.InfinityDrain.com



Note: Installer must verify all rough-in dimensions prior to installation and consult local and national codes. Conformity and compliance to local and national codes are the responsibility of the installer.