

TD 20 Series



TD 20 | Tile Drain Series

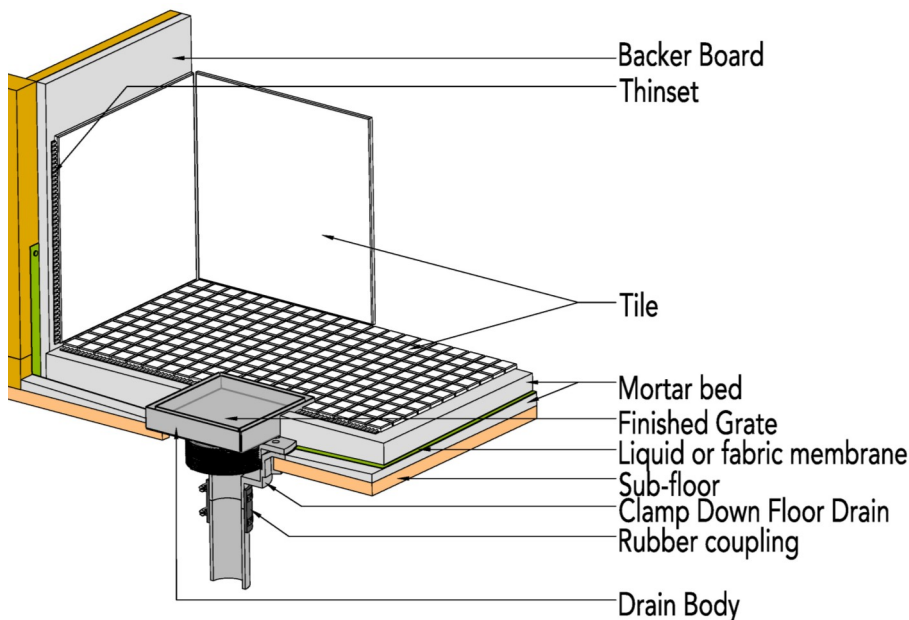
- 12 gauge 316 Stainless Steel Frame and Body
- 3/4" depth inside frame for material
- 1/4" drainage gap
- Indoor or outdoor use
- Commercial grade large drain body (Cast Iron, PVC or ABS) with 4" throat
- Grate can be removed completely for cleaning
- Requires traditional 4-way floor pitch
- Flow rate 9 GPM with 2" outlet
- Flow rate 21 GPM with 3" outlet

Finishes:

- ___ Satin Stainless
- ___ Polished Stainless



Installation (TD) Center Drain



Complete Kits:

- TD 20-2I SS Clamp Down Drain Cast Iron
- TD 20-2I PS Clamp Down Drain Cast Iron
- TD 20-2A SS Clamp Down Drain ABS
- TD 20-3A PS Clamp Down Drain ABS
- TD 20-2P SS Clamp Down Drain PVC
- TD 20-3P PS Clamp Down Drain PVC

Components:

- T 20 A 8" x 8" Tile Drain Strainer

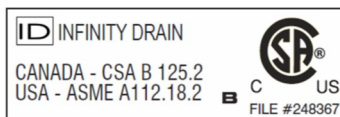
- CDI 42 Clamp Down Drain Cast Iron
- CDI 43 Clamp Down Drain Cast Iron
- CDA 42 Clamp Down Drain ABS
- CDA 43 Clamp Down Drain ABS
- CDP 42 Clamp Down Drain PVC
- CDP 43 Clamp Down Drain PVC
- TKEY Lift Out Key

Optional Components:

- UCP 4 Universal 4" Clamping Plate

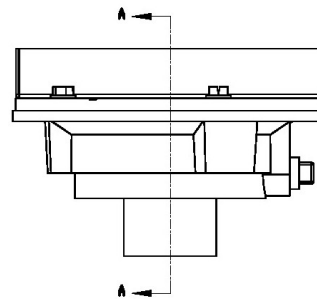
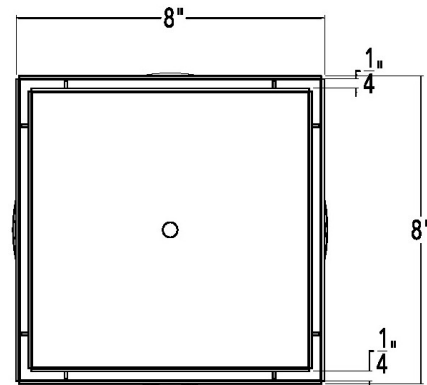
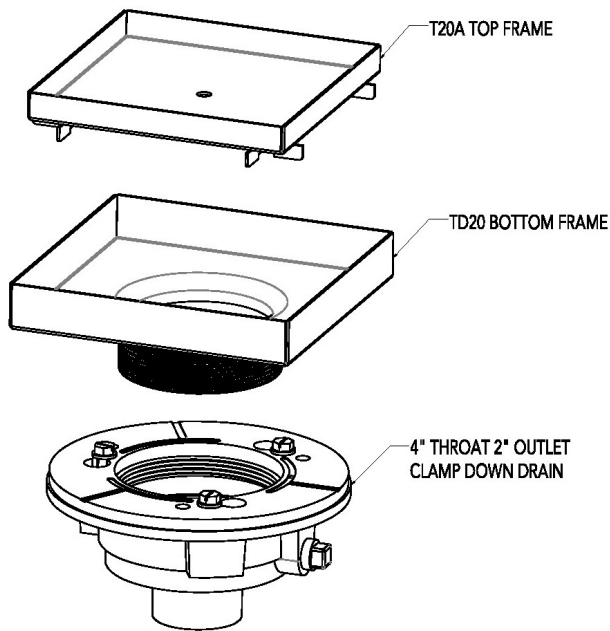
Infinity Drain

18 Secatoag Avenue
Port Washington, NY 11050
Phone: 516.767.6786
Fax: 516.740.3066
www.InfinityDrain.com



Note: Installer must verify all rough-in dimensions prior to installation and consult local and national codes. Conformity and compliance to local and national codes are the responsibility of the installer.

TD 20-2 Specifications



TD 20-2I

8" x 8" Kit with Cast Iron Drain Body No Hub Outlet

(8" L x 8" W x 1 5/16" H)

1 - T 20 A Tile Drain Strainer

1 - CDI 42 Clamp Down Drain Cast Iron

TD 20-2A

8" x 8" Kit with ABS Drain Body No Hub Outlet

(8" L x 8" W x 1 5/16" H)

1 - T 20 A Tile Drain Strainer

1 - CDA 42 Clamp Down ABS

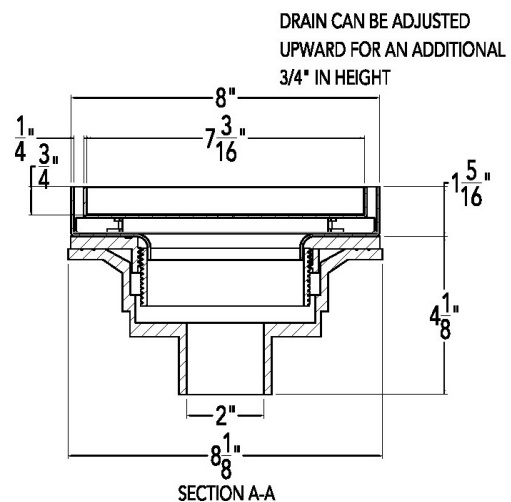
TD 20-2P

8" x 8" Kit with PVC Drain Body No Hub Outlet

(8" L x 8" W x 1 5/16" H)

1 - T 20 A Tile Drain Strainer

1 - PVC 42 Clamp Down ABS



Note: Installer must verify all rough-in dimensions prior to installation and consult local and national codes. Conformity and compliance to local and national codes are the responsibility of the installer.

Infinity Drain

18 Secatoag Avenue
Port Washington, NY 11050
Phone: 516.767.6786
Fax: 516.740.3066
www.InfinityDrain.com

