

LW5 B Series

ID Infinity Drain

LW5 | Center Drain

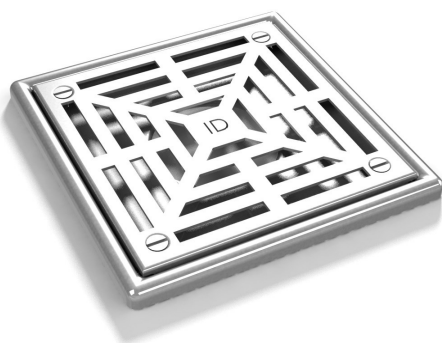
- 16 Gauge 304 Stainless Steel Frame with ABS Body
- Indoor or outdoor use
- Overall Size: 5 1/16" square
- Works with 2" Bonded Flange Drain Body
- Uses Liquid or Fabric Sheet Waterproofing
- Grate can be removed completely for cleaning
- Available as 'Strainer Only' or 'Complete Kit' Assembly with Bonded Flange Floor Drain

- Flow rate 9 GPM per outlet*

**Flow rate measured at outlet only. Measurement does not account for water in channel or sheet-*

Finishes:

- ___ Satin Stainless (SS)
- ___ Polished Stainless (PS)
- ___ Lifetime Oil Rubbed
- ___ Bronze (ORB)



Complete Kits:

LW5 BA-2 SS	ABS Bonded Flange Drain Body
LW5 BA-2 PS	ABS Bonded Flange Drain Body
LW5 BA-2 ORB	ABS Bonded Flange Drain Body

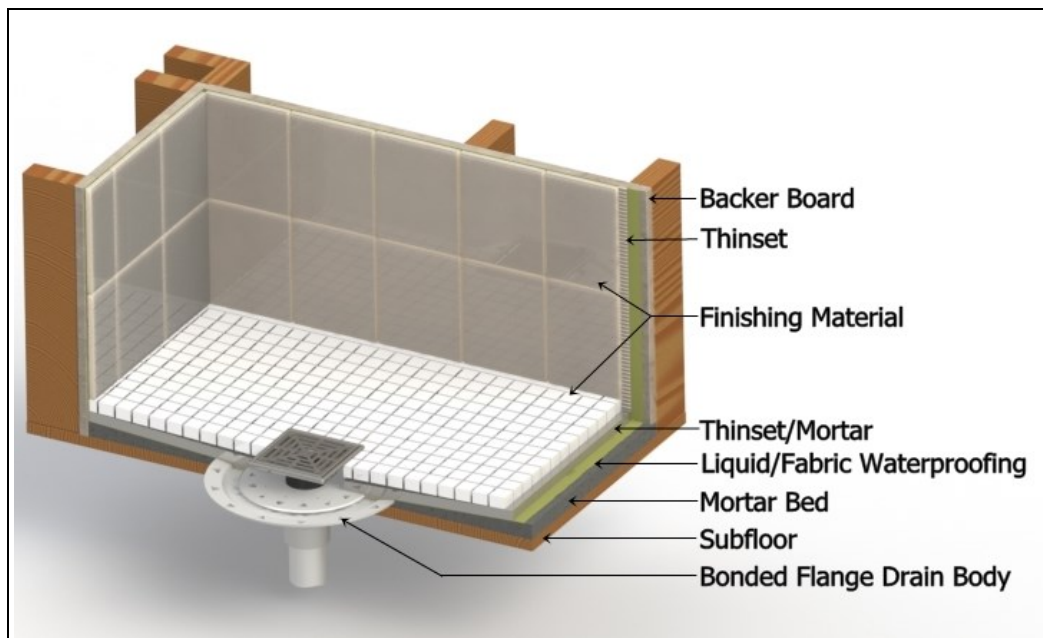
LW5 BP-2 SS	PVC Bonded Flange Drain Body
LW5 BP-2 PS	PVC Bonded Flange Drain Body
LW5 BP-2 ORB	PVC Bonded Flange Drain Body

Components:

L5-2 SS	Strainer Only
L5-2 PS	Strainer Only
L5-2 ORB	Strainer Only

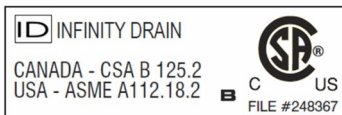
BFA 22	2" ABS Bonded Flange Drain Body
BFP 22	2" PVC Bonded Flange Drain Body

Installation LW5 Center Drain



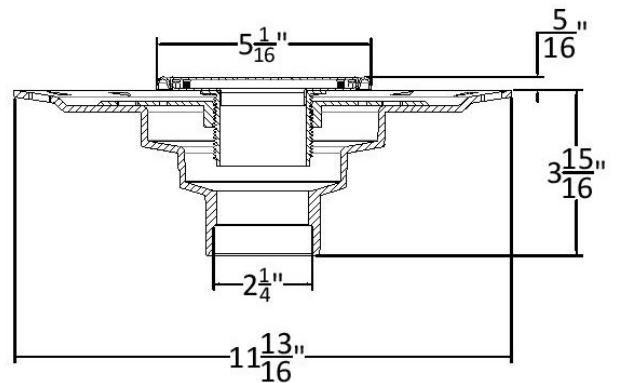
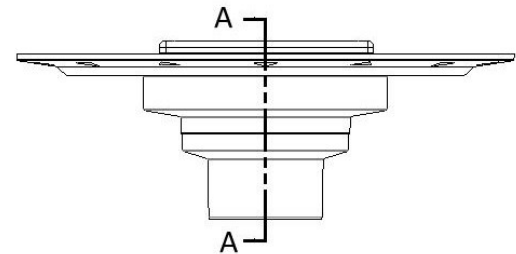
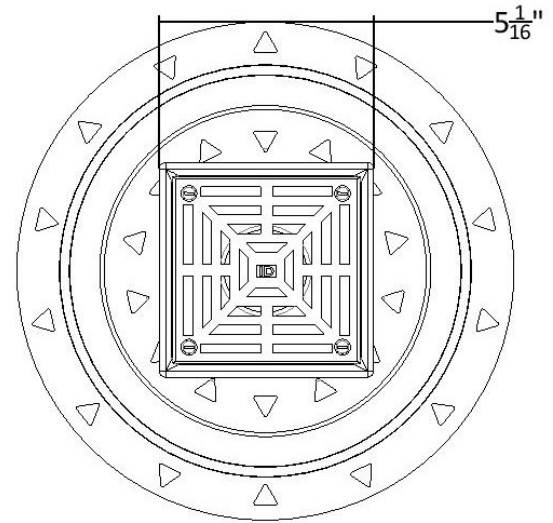
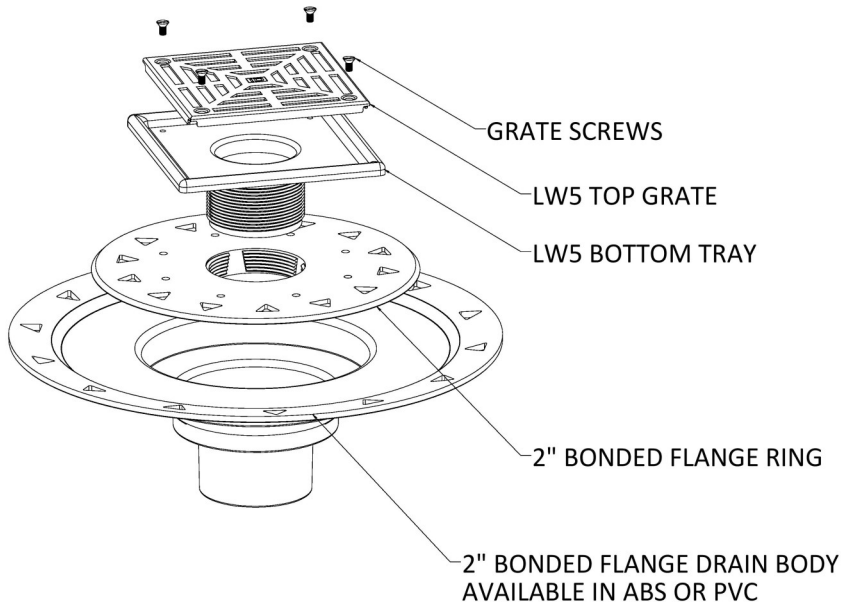
Infinity Drain

18 Secatoag Avenue
Port Washington, NY 11050
Phone: 516.767.6786
Fax: 516.740.3066
www.InfinityDrain.com



Note: Installer must verify all rough-in dimensions prior to installation and consult local and national codes. Conformity and compliance to local and national codes are the responsibility of the installer.

LW5 Specifications



SECTION A-A

LW5 BA- 2

5" x 5" Kit with ABS Bonded Flange Drain Body

2" Outlet

(5 1/16" L x 5 1/16" w x 7/16" H)

1 - L5 Strainer

1 - BFA ABS Bonded Flange Drain Body

LW5 BP- 2

5" x 5" Kit with PVC Bonded Flange Drain Body

2" Outlet

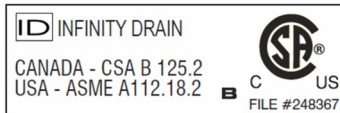
(5 1/16" L x 5 1/16" w x 7/16" H)

1 - L5 Strainer

1 - BFP PVC Bonded Flange Drain Body

Infinity Drain

18 Secatoag Avenue
Port Washington, NY 11050
Phone: 516.767.6786
Fax: 516.740.3066
www.InfinityDrain.com



Note: Installer must verify all rough-in dimensions prior to installation and consult local and national codes. Conformity and compliance to local and national codes are the responsibility of the installer.