

S-AS 65 Series

ID Infinity Drain

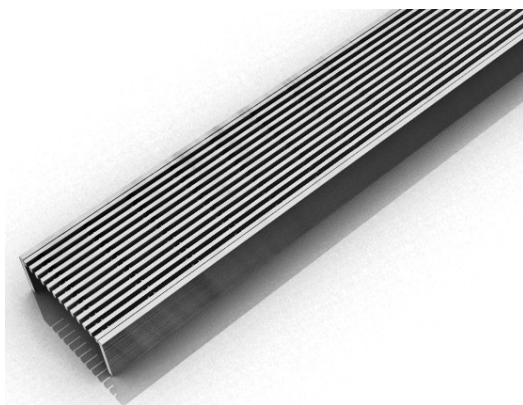
S-AS 65 | Site Sizeable

- Modify length and locate outlet on-site
- Indoor or outdoor use
- 316 Wedge Wire stainless steel grate
- Stainless Steel channel
- Works with 2" clamp down floor drain with 2" throat (strainer size) (not included)
- Uses Hot Mop, Lead Pan, PVC Vinyl Liner, Rubber Liner (Chloralloy™) Copper Pan or Fiberglass waterproofing
- Grate can be removed completely for cleaning
- Flow rate 21 GPM per outlet*

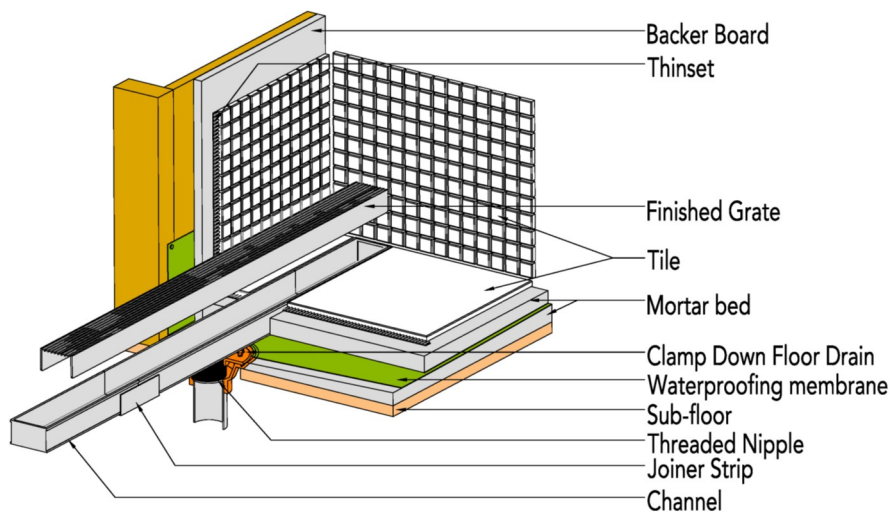
**Flow rate measured at outlet only. Measurement does not account for water in channel or sheeting on shower floor.*

Finishes:

- ___ Satin Stainless
- ___ Polished Stainless



Installation (S) Site Sizable



Complete Kits:

| | |
|-----------|------------------|
| S-AS 6536 | 36" Complete Kit |
| S-AS 6548 | 48" Complete Kit |
| S-AS 6560 | 60" Complete Kit |
| S-AS 6572 | 72" Complete Kit |
| S-AS 6596 | 96" Complete Kit |

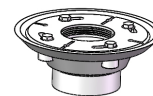
Longer lengths for indoor or outdoor installations.

Components:

| | |
|----------|------------------------------------|
| SA 6536 | 36" Stainless Steel Grate |
| SA 6548 | 48" Stainless Steel Grate |
| SA 6560 | 60" Stainless Steel Grate |
| SC 6548 | 48" Stainless Open Ended Channel |
| SC 6596 | 96" Stainless Open Ended Channel |
| LC 6528 | 28" Stainless Closed Ended Channel |
| LC 6540 | 40" Stainless Closed Ended Channel |
| LC 6552 | 52" Stainless Closed Ended Channel |
| LC 6564 | 64" Stainless Closed Ended Channel |
| LC 6588 | 88" Stainless Closed Ended Channel |
| LF 65 | 8" Stainless Steel Outlet Section |
| GJS 65 | Stainless Steel Joiner Strip |
| TNAS | Threaded Nipple |
| Sikaflex | 1a Construction Sealant |

Add Clamp Down Drain:

| | |
|--------|----------------------------|
| CDA 22 | Clamp Down Drain ABS |
| CDI 22 | Clamp Down Drain Cast Iron |
| CDP 22 | Clamp Down Drain PVC |



2" clamp down drain not included in kit

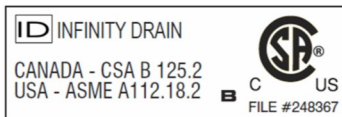
Optional Components:

| | |
|--------|--|
| SLA 65 | Stainless Steel 90° Angle Joiner |
| TNRN | Stainless Steel Threaded Nipple (3" extension) |
| UCP 2 | Universal 2" Clamping Plate |
| UCP 4 | Universal 4" Clamping Plate |
| ERB | Eccentric Reducer Bushing 4"x2" |
| SE 65 | Stainless Steel End Section |

Note: Installer must verify all rough-in dimensions prior to installation and consult local and national codes. Conformity and compliance to local and national codes are the responsibility of the installer.

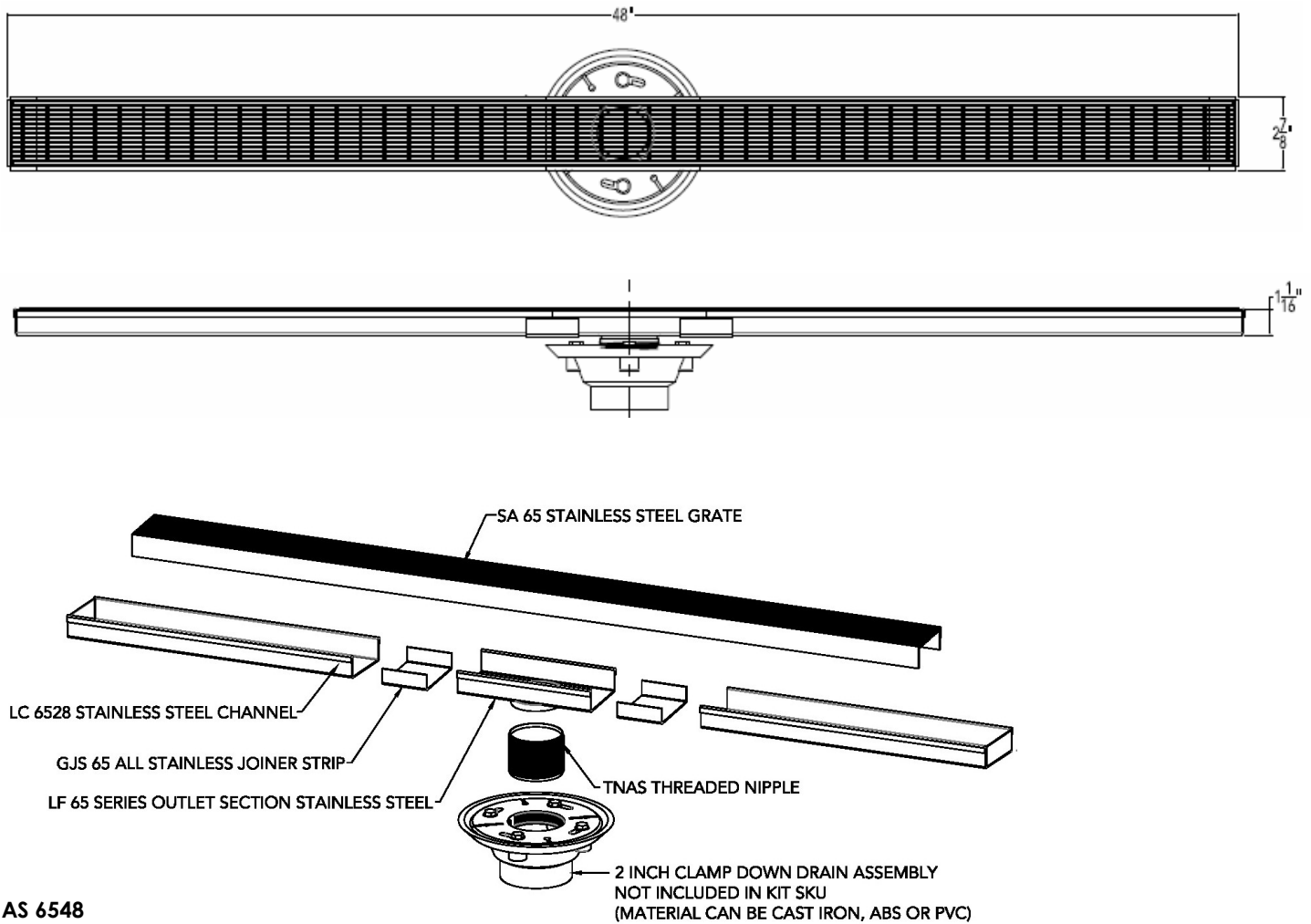
Infinity Drain

18 Secatoag Avenue
Port Washington, NY 11050
Phone: 516.767.6786
Fax: 516.740.3066
www.InfinityDrain.com



S-AS 6548 Specifications

ID Infinity Drain



AS 6548

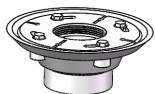
48" Complete Kit Includes:

(48 1/8" l x 2 7/8" w x 1" h)

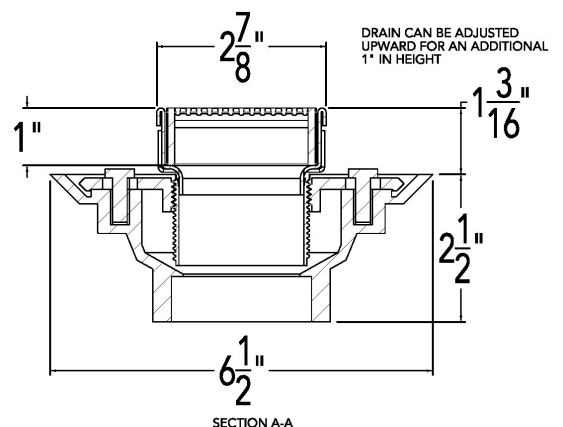
- 1 - SA 6548 Stainless Steel Grate
- 1 - LC 6540 Stainless Steel Channel
- 1 - LF 65 8" Outlet Section Stainless Steel
- 2 - GJS 65 All Stainless Joiner Strip
- 1 - TNAS Threaded Nipple
- 1 - Sikaflex 1a Construction Sealant

Add Clamp Down Drain:

- CDA 22 Clamp Down Drain ABS
- CDI 22 Clamp Down Drain Cast Iron
- CDP 22 Clamp Down Drain PVC

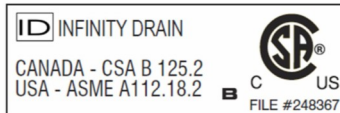


2" clamp down drain not included in kit



Infinity Drain

18 Secatoag Avenue
Port Washington, NY 11050
Phone: 516.767.6786
Fax: 516.740.3066
www.InfinityDrain.com



Note: Installer must verify all rough-in dimensions prior to installation and consult local and national codes. Conformity and compliance to local and national codes are the responsibility of the installer.