

S-AG 65 Series

ID Infinity Drain

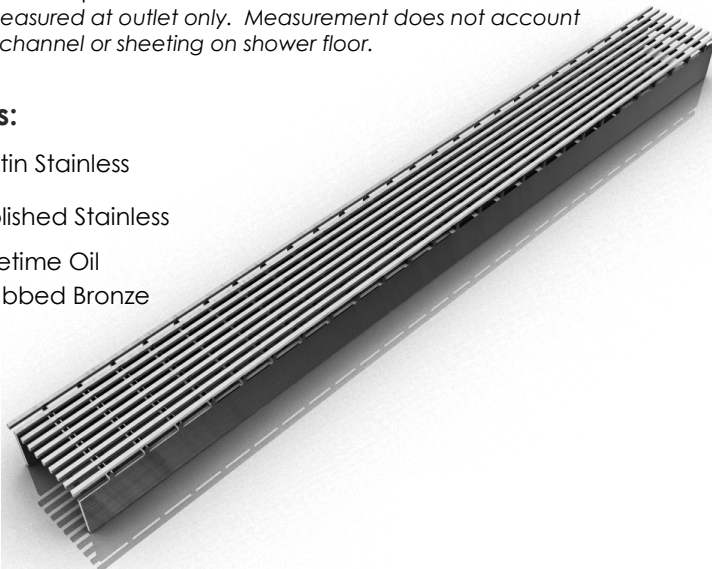
S-AG 65 | Site Sizeable

- Modify length and locate outlet on-site
- Indoor or outdoor use
- 316 Wedge Wire stainless steel grate
- PVC channel
- Works with 2" clamp down floor drain with 2" throat (strainer size) (not included)
- Uses Hot Mop, Lead Pan, PVC Vinyl Liner, Rubber Liner (Chloralloy™) Copper Pan or Fiberglass waterproofing
- Grate can be removed completely for cleaning
- Flow rate 16 GPM per outlet*

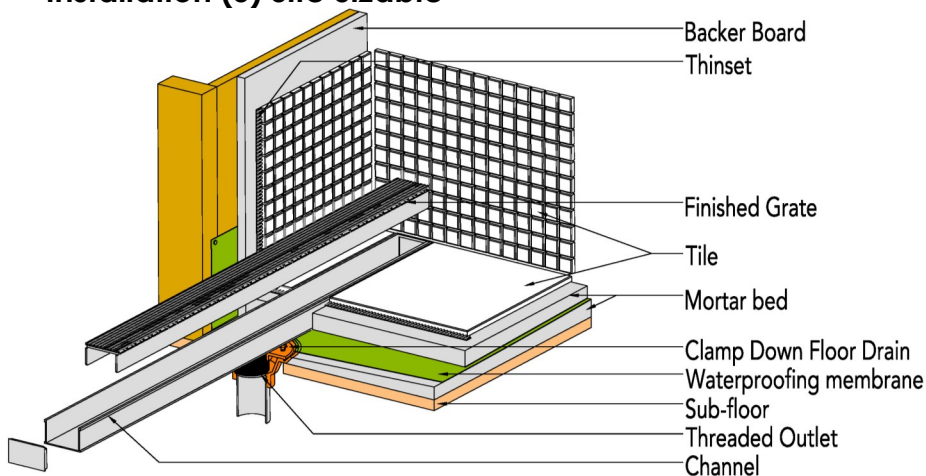
**Flow rate measured at outlet only. Measurement does not account for water in channel or sheeting on shower floor.*

Finishes:

- ___ Satin Stainless
- ___ Polished Stainless
- ___ Lifetime Oil
- ___ Rubbed Bronze

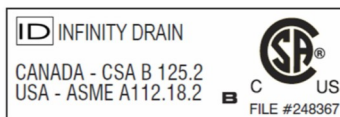


Installation (S) Site Sizable



Infinity Drain

18 Secatoag Avenue
Port Washington, NY 11050
Phone: 516.767.6786
Fax: 516.740.3066
www.InfinityDrain.com



Complete Kits:

| | |
|-----------|------------------|
| S-AG 6536 | 36" Complete Kit |
| S-AG 6548 | 48" Complete Kit |
| S-AG 6560 | 60" Complete Kit |
| S-AG 6596 | 96" Complete Kit |

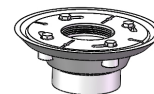
Longer lengths for indoor or outdoor installations.

Components:

| | |
|---------|---------------------------|
| A 6536 | 36" Stainless Steel Grate |
| A 6548 | 48" Stainless Steel Grate |
| A 6560 | 60" Stainless Steel Grate |
| G 6536 | 36" PVC Channel |
| G 6548 | 48" PVC Channel |
| G 6560 | 60" PVC Channel |
| G 6596 | 96" PVC Channel |
| G 65108 | 108" PVC Channel |
| E 65 | PVC Stop End |
| S 50 | PVC Threaded Outlet |

Add Clamp Down Drain:

| | |
|--------|----------------------------|
| CDA 22 | Clamp Down Drain ABS |
| CDI 22 | Clamp Down Drain Cast Iron |
| CDP 22 | Clamp Down Drain PVC |



2" clamp down drain not included in kit

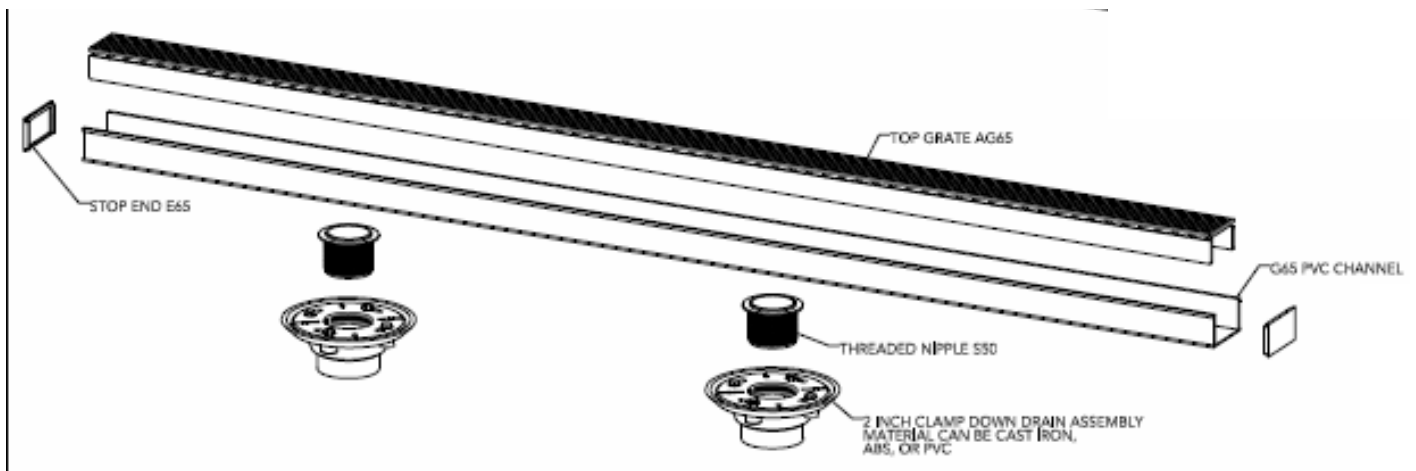
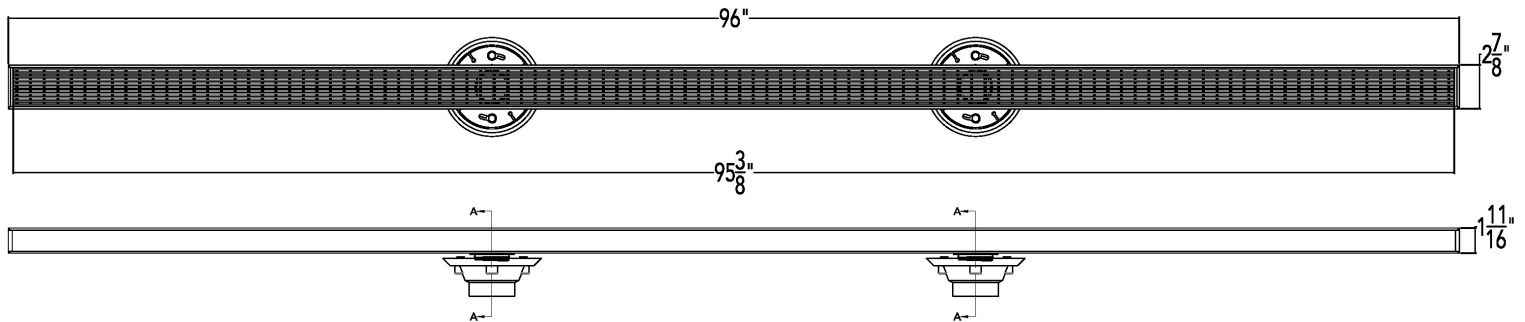
Optional Components:

| | |
|--------|---|
| F 65 | PVC Non-Threaded Outlet |
| GJC 65 | PVC Straight Joiner Strip |
| GAM 65 | PVC 90° Angle Joiner |
| TNRN-P | PVC Threaded Nipple, (extends 2 3/4" to the S 50 PVC Threaded Outlet) |
| UCP 2 | Universal 2" Clamping Plate |
| UCP 4 | Universal 4" Clamping Plate |
| ERB | Eccentric Reducer Bushing 4"x2" |

Note: Installer must verify all rough-in dimensions prior to installation and consult local and national codes. Conformity and compliance to local and national codes are the responsibility of the installer.

S-AG 6596 Specifications

ID Infinity Drain



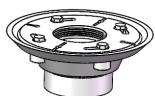
AG 6596

60" Complete Kit Includes:

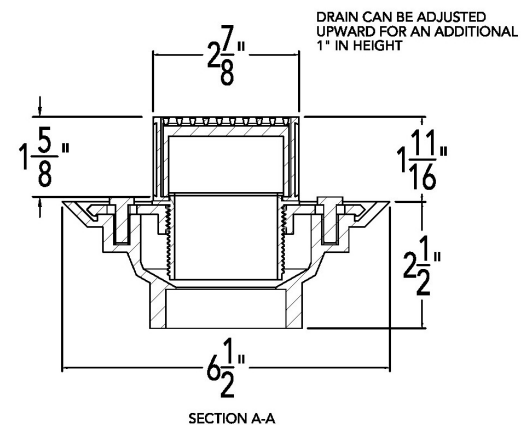
- (96 1/8" l x 2 7/8" w x 1 5/8" h)
- 2 - A 6548 Stainless Steel Grate
- 1 - G 6596 PVC Channel
- 2 - E 65 End Section
- 2 - S50 Threaded Outlet

Add Clamp Down Drain:

- CDA 22 Clamp Down Drain ABS
- CDI 22 Clamp Down Drain Cast Iron
- CDP 22 Clamp Down Drain PVC

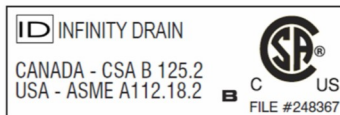


2" clamp down drain not included in kit



Infinity Drain

18 Secatoag Avenue
Port Washington, NY 11050
Phone: 516.767.6786
Fax: 516.740.3066
www.InfinityDrain.com



Note: Installer must verify all rough-in dimensions prior to installation and consult local and national codes. Conformity and compliance to local and national codes are the responsibility of the installer.