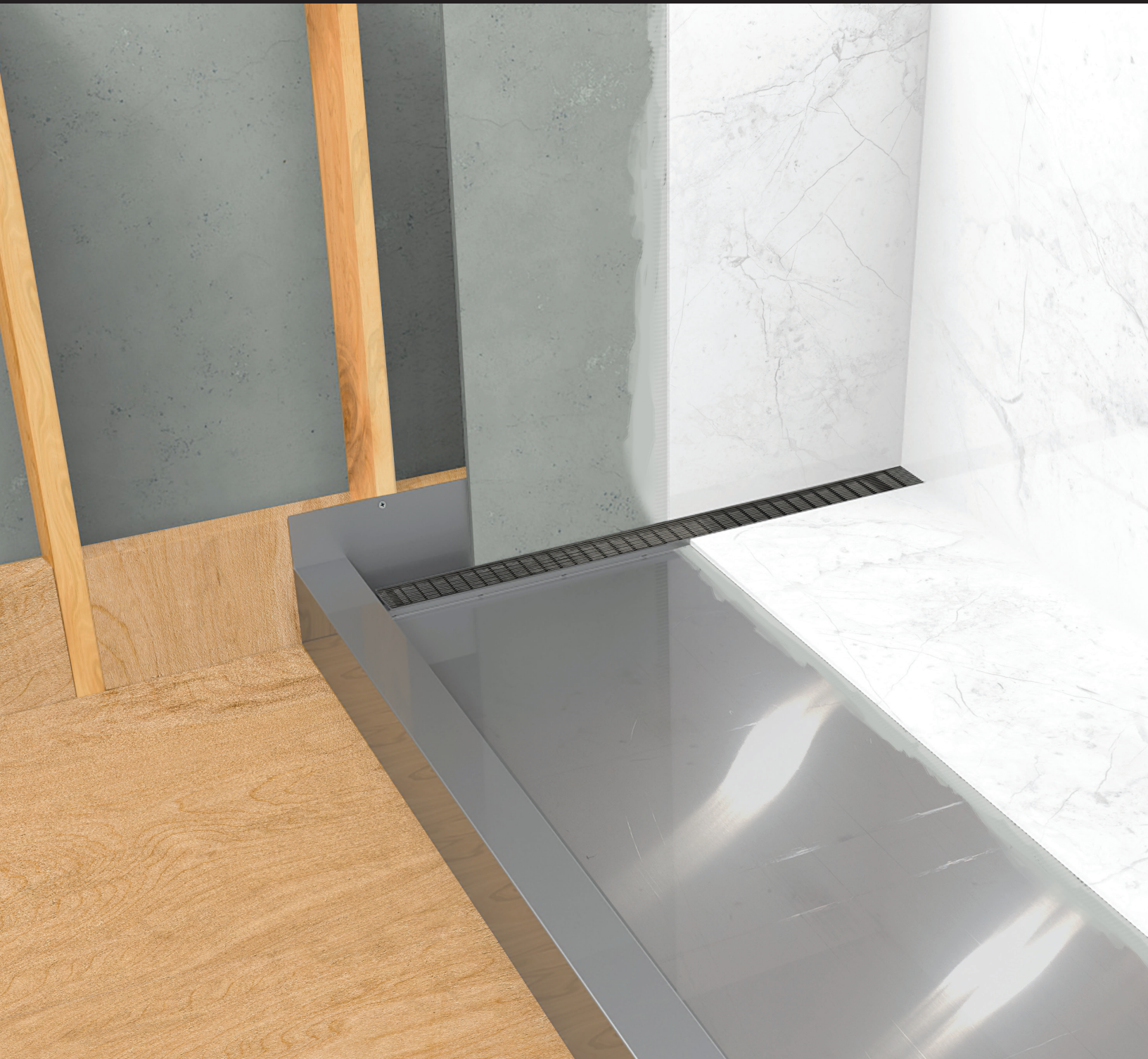
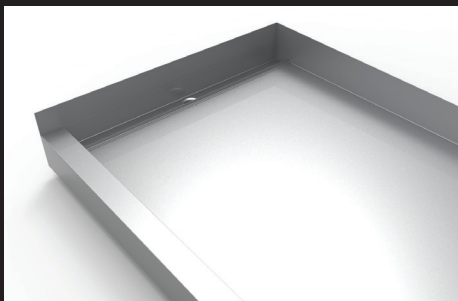


ID Infinity Drain

Custom Stainless Steel Shower Pan



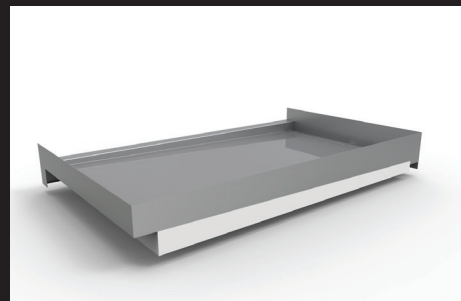
Infinity Drain® Custom Stainless Steel Shower Bases



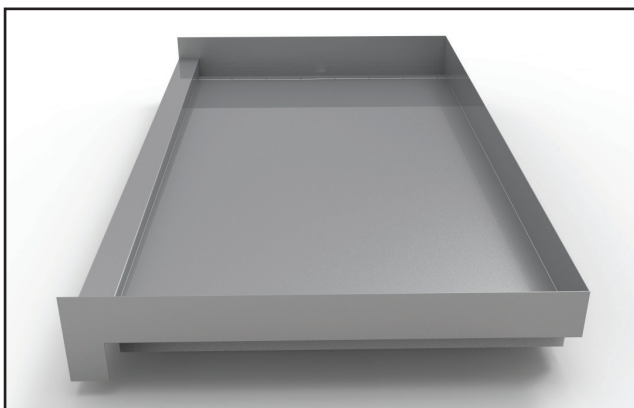
With or without curb.



Integrated drain body.

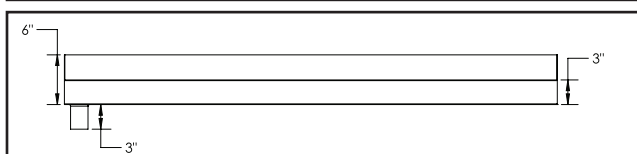
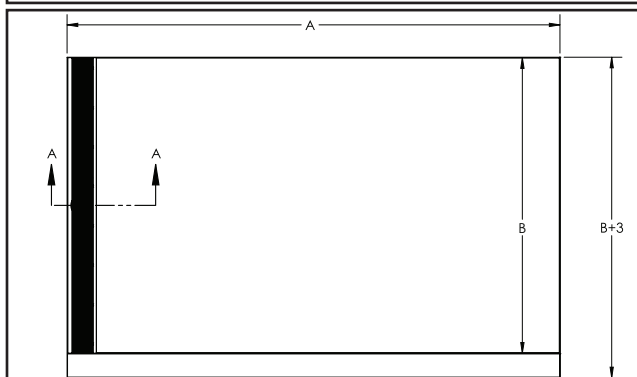
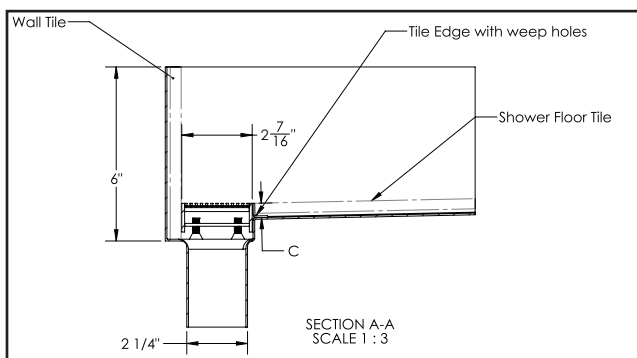


Pre-sloped.
Ready to Tile.



Features:

- Stainless Steel shower pan is completely waterproof.
- No need for additional floor waterproofing.
- Ready to tile.
- Linear drain or center drain option.
- Curb or curbless option.
- 25 year waterproofing warranty.
- Custom Sizing



Additional Features:

- Integrated drain body (linear or center).
- With a 6" sleeve on foundation, the 2" No hub connection through slab allows for 2" variance in any direction.
- Shower floor sets shower framing for exact wall to wall installation.
- Instead of building a shower, install a receptacle similar to a tub.



	1st Generation			2nd Generation		3rd Generation	4th Generation
	High Labor Cost Flexible installation, longest install Compatible with Site Sizable (S) and Fixed Length (FX) Series			Less labor Cost Fast and flush against the wall installation Compatible with Fixed Flange (FF) and Side Outlet (FT) Series		Low labor cost Faster install Drain part of shower system	Lowest labor cost Fastest install Integrated drain
	Copper Pan	Lead Pan	Vinyl Liner Pan (PVC, Rubber)	Liquid Applied Waterproofing	Fabric Waterproofing	USG Durock™ Brand Infinity Drain® Shower System	Infinity Drain Custom Stainless Steel Shower Pan
Labor Cost	\$ \$ \$ \$	\$ \$ \$ \$	\$ \$ \$	\$ \$	\$ \$	\$	\$
Length of installation							
Material Cost	\$ 1	1	\$	\$ \$	\$ \$	\$ \$	\$ \$ 1
Ease of Installation							
Ease of coordination between trades							
Allows for wall to wall installation				*	*	*	
Allows for flush against the wall installation	**	**	**			 *	
No mud bed needed or pre-sloped floor							
No customization needed for project installation (site measuring)							
Installation Waterproofing Warranty	?	?	?	10 yrs	10 yrs	10 yrs	25 yrs

* Custom product may be needed.

** Site modification or wall specific product may be needed.