

S-TIFAS 65 Series

ID Infinity Drain

S-TIFAS 65 | Site Sizeable

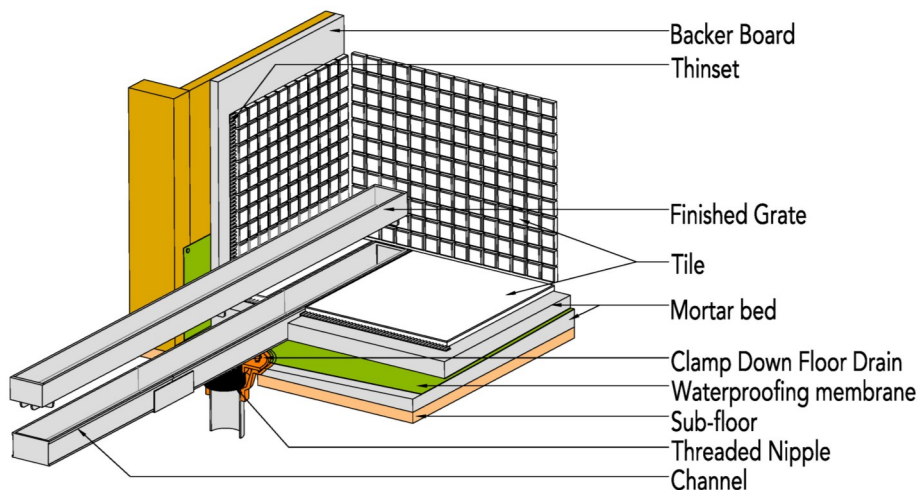
- Modify length and locate outlet on-site
- Indoor or outdoor use
- Incorporates tile or solid surface material up to 3/4" thick within the grate frame
- 316 stainless steel grate
- Stainless steel channel
- Works with 2" clamp down floor drain with 2" throat (strainer size)
- Uses Hot Mop, Lead Pan, PVC Vinyl Liner, Rubber Liner (Chloraloy™) Copper Pan or Fiberglass waterproofing
- Grate can be removed completely for cleaning
- Flow rate 9 GPM per outlet*

Finishes:

- Satin Stainless
- Polished Stainless

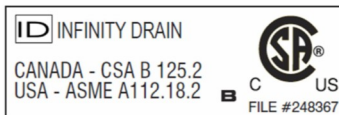


Installation (S) Site Sizable



Infinity Drain

18 Secatoag Avenue
Port Washington, NY 11050
Phone: 516.767.6786
Fax: 516.740.3066
www.InfinityDrain.com



Complete Kits:

| | |
|--------------|------------------|
| S-TIFAS 6540 | 40" Complete Kit |
| S-TIFAS 6548 | 48" Complete Kit |
| S-TIFAS 6560 | 60" Complete Kit |
| S-TIFAS 6580 | 80" Complete Kit |
| S-TIFAS 6596 | 96" Complete Kit |

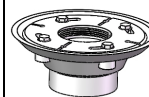
Longer lengths for indoor or outdoor installations.

Components:

| | |
|----------|------------------------------------|
| TA 6540 | 40" Stainless Steel Grate |
| TA 6548 | 48" Stainless Steel Grate |
| TA 6560 | 60" Stainless Steel Grate |
| TC 6548 | 48" Stainless Open Ended Channel |
| TC 6596 | 96" Stainless Open Ended Channel |
| HC 6532 | 32" Stainless Closed Ended Channel |
| HC 6540 | 40" Stainless Closed Ended Channel |
| HC 6552 | 52" Stainless Closed Ended Channel |
| HC 6572 | 72" Stainless Closed Ended Channel |
| HC 6588 | 88" Stainless Closed Ended Channel |
| HF 65 | 8" Stainless Steel Outlet Section |
| TJS 65 | Stainless Steel Joiner Strip |
| TE 65 | Stainless Steel End Section |
| TNAS | Stainless Steel Threaded Nipple |
| TIF PL | TIF Plates |
| TKEY | Lift Out Key |
| Sikaflex | 1a Construction Sealant |

Add Clamp Down Drain:

| | |
|--------|----------------------------|
| CDI 22 | Clamp Down Drain Cast Iron |
| CDA 22 | Clamp Down Drain ABS |
| CDP 22 | Clamp Down Drain PVC |



2" clamp down drain not included in kit

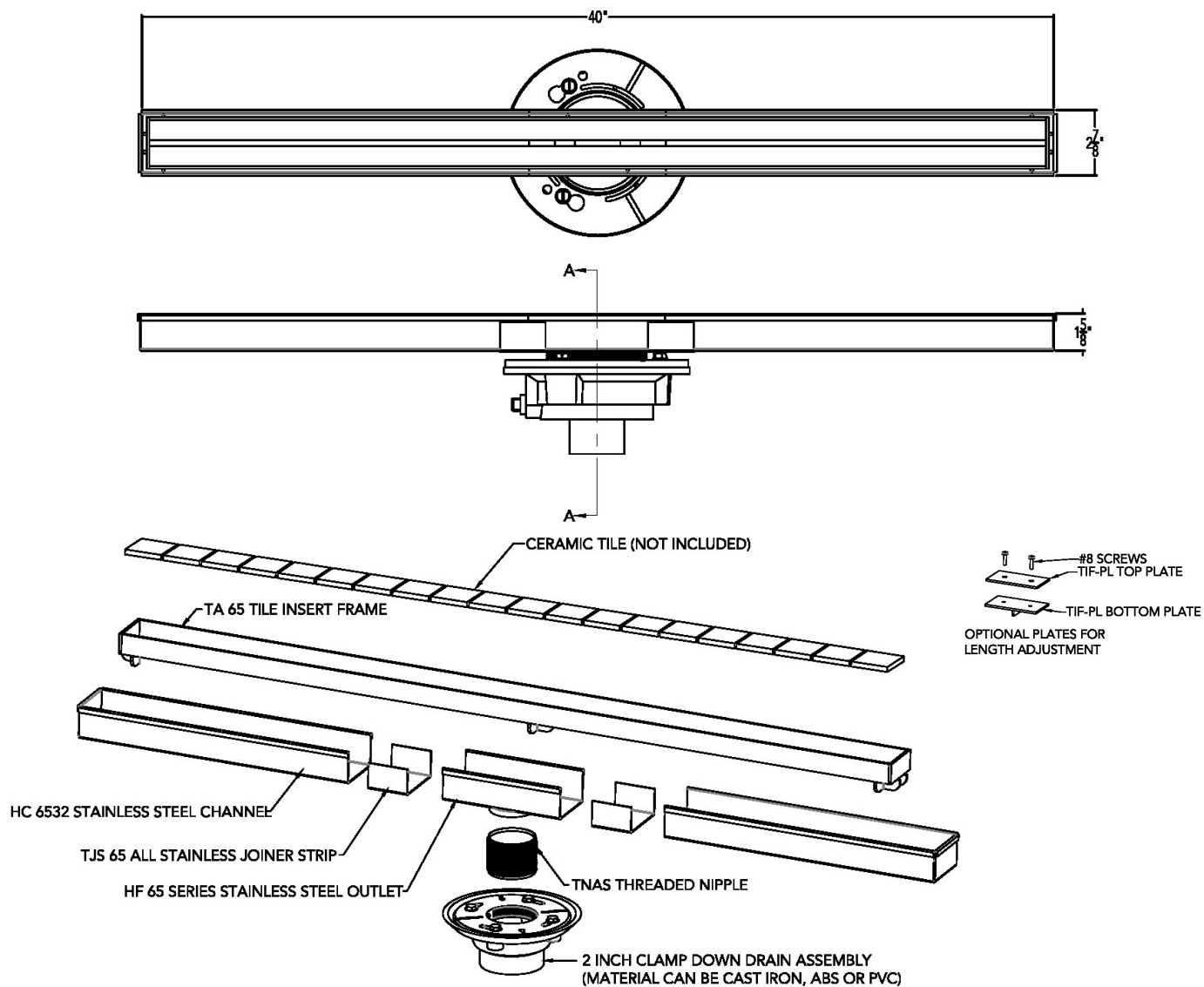
Optional Components:

| | |
|--------|---|
| SHA 65 | Stainless Steel 90° Angle Joiner |
| TNRN | Stainless Steel Threaded Nipple, (3" extension) |
| UCP 2 | Universal 2" Clamping Plate |
| UCP 4 | Universal 4" Clamping Plate |
| ERB | Eccentric Reducer Bushing 4" x 2" |

Note: Installer must verify all rough-in dimensions prior to installation and consult local and national codes. Conformity and compliance to local and national codes are the responsibility of the installer.

S-TIFAS 6540 Specifications

ID Infinity Drain



S-TIFAS 6540 SS

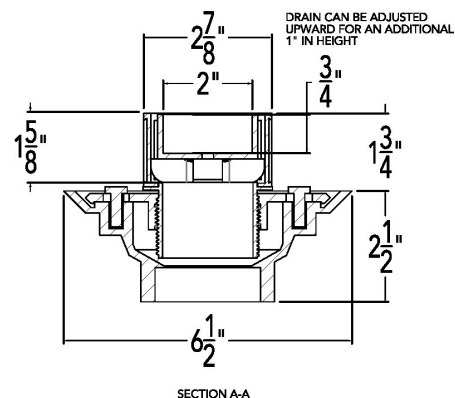
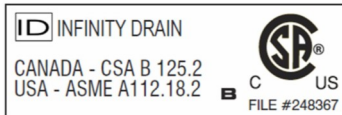
40" Complete Kit Includes:

(40 1/8" l x 2 7/8" w x 1 5/8" h)

- 1 - TA 6540 Tile Insert Frame
- 1 - HC 6532 Stainless Steel Channel
- 1 - HF 65 8" Outlet Section Stainless Steel
- 2 - TJS 65 Stainless Steel Joiner Strip
- 1 - TNAS Threaded Nipple
- 1 - TKEY Lift Out Key
- 1 - Sikaflex 1a Construction Sealant

Infinity Drain

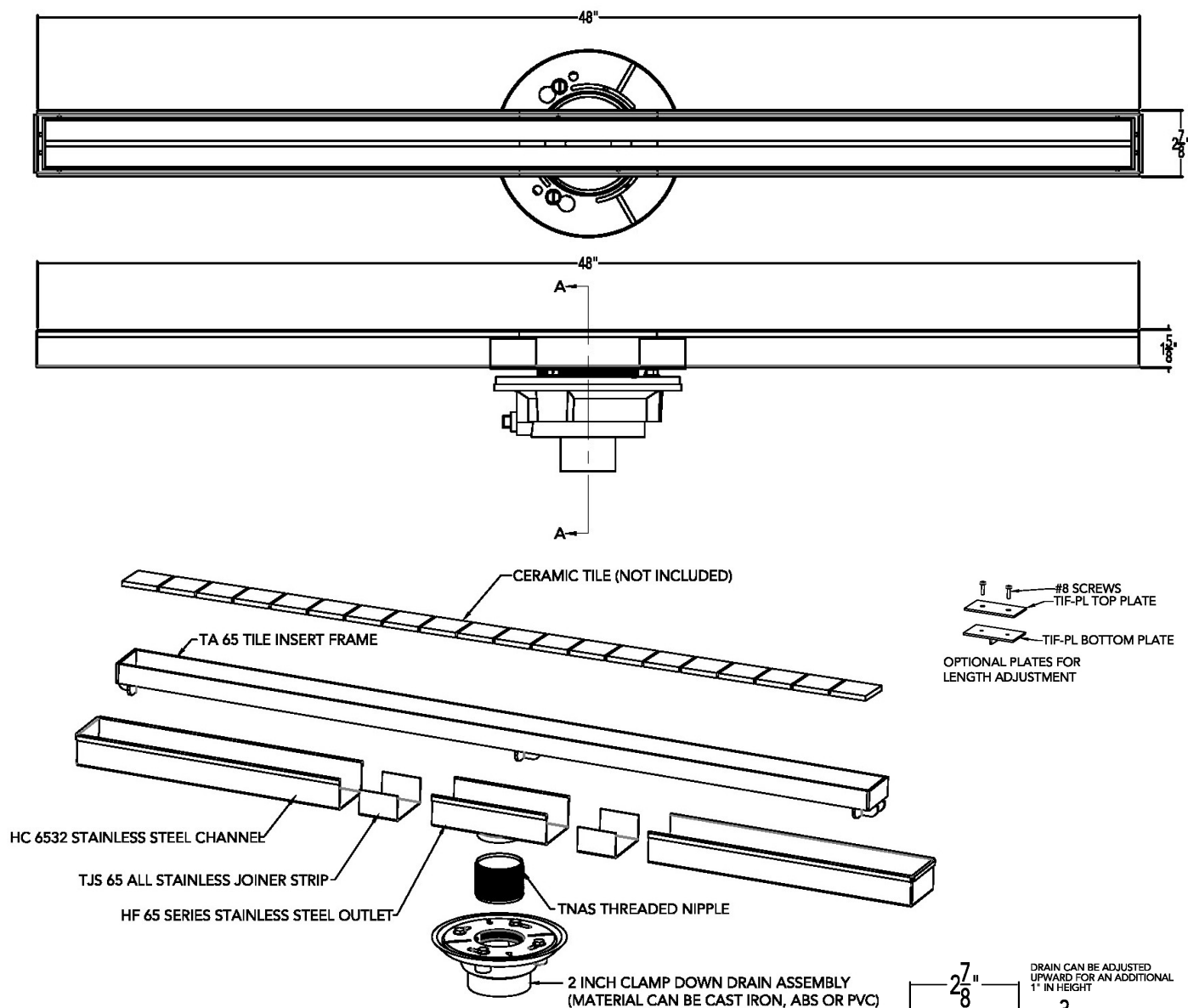
18 Secatoag Avenue
Port Washington, NY 11050
Phone: 516.767.6786
Fax: 516.740.3066
www.InfinityDrain.com



Note: Installer must verify all rough-in dimensions prior to installation and consult local and national codes. Conformity and compliance to local and national codes are the responsibility of the installer.

S-TIFAS 6548 Specifications

ID Infinity Drain



S-TIFAS 6548 SS

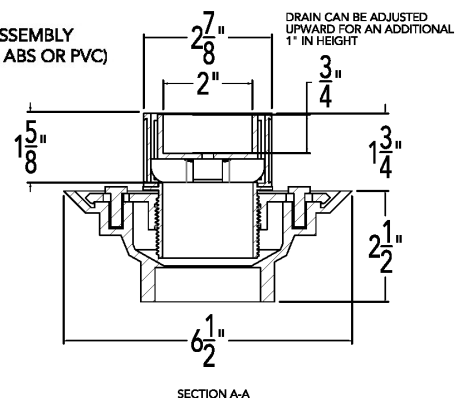
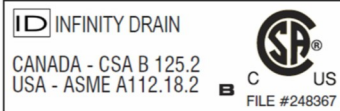
48" Complete Kit Includes:

(48 1/8" l x 2 7/8" w x 1 5/8" h)

- 1 - TA 6548 Tile Insert Frame
- 1 - HC 6540 Stainless Steel Channel
- 1 - HF 65 8" Outlet Section Stainless Steel
- 2 - TJS 65 Stainless Steel Joiner Strip
- 1 - TNAS Threaded Nipple
- 1 - TKEY Lift Out Key
- 1 - Sikaflex 1a Construction Sealant

Infinity Drain

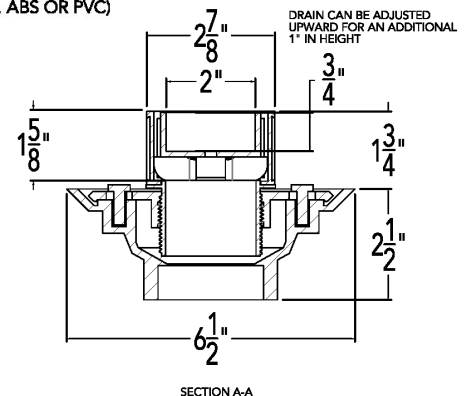
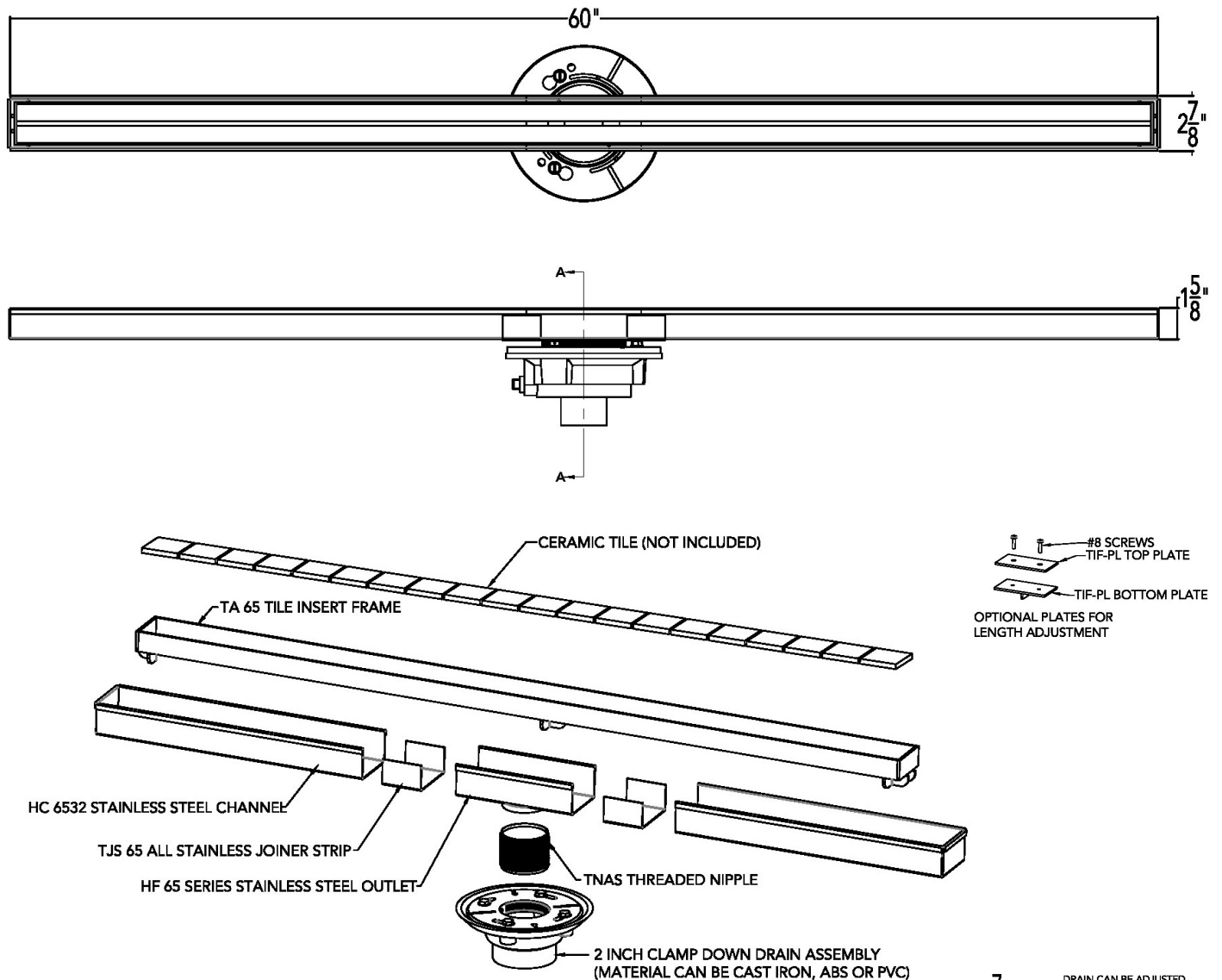
18 Secatoag Avenue
Port Washington, NY 11050
Phone: 516.767.6786
Fax: 516.740.3066
www.InfinityDrain.com



Note: Installer must verify all rough-in dimensions prior to installation and consult local and national codes. Conformity and compliance to local and national codes are the responsibility of the installer.

S-TIFAS 6560 Specifications

ID Infinity Drain



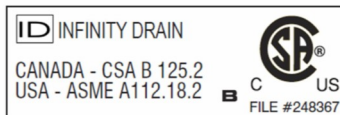
S-TIFAS 6560 SS

60" Complete Kit Includes:

- (60 1/8" l x 2 7/8" w x 1 5/8" h)
- 1 - TA 6560 Tile Insert Frame
- 1 - HC 6552 Stainless Steel Channel
- 1 - HF 65 8" Outlet Section Stainless Steel
- 2 - TJS 65 Stainless Steel Joiner Strip
- 1 - TNAS Threaded Nipple
- 1 - TKEY Lift Out Key
- 1 - Sikaflex 1a Construction Sealant

Infinity Drain

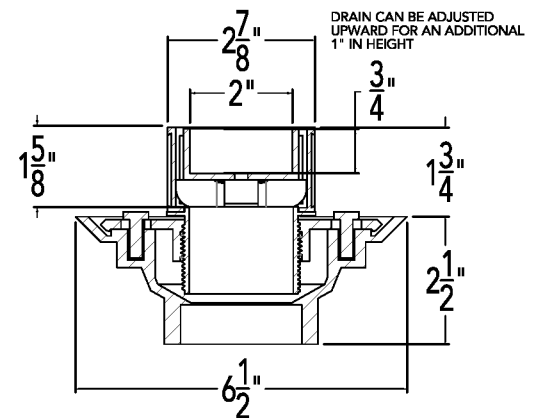
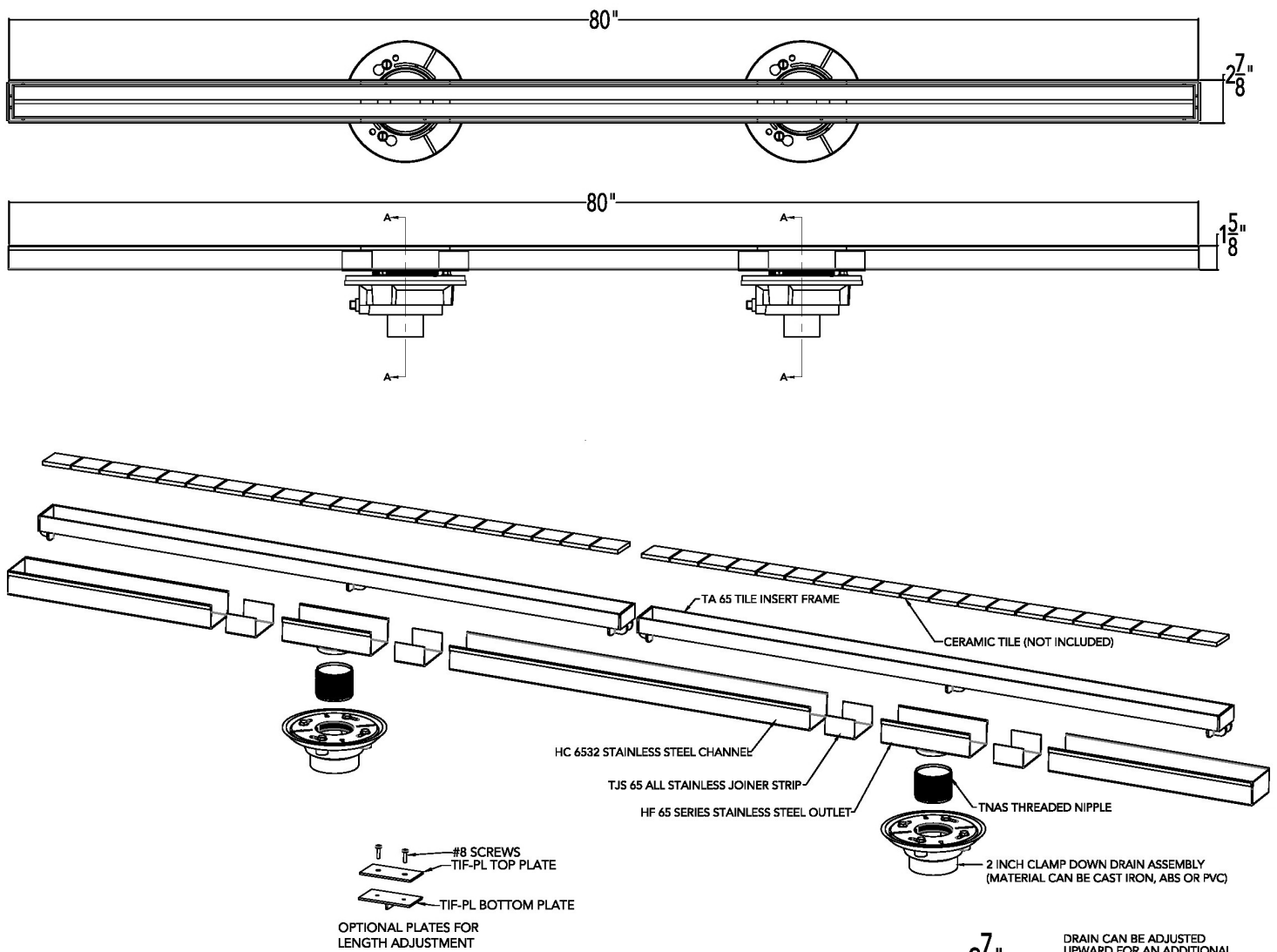
18 Secatoag Avenue
Port Washington, NY 11050
Phone: 516.767.6786
Fax: 516.740.3066
www.InfinityDrain.com



Note: Installer must verify all rough-in dimensions prior to installation and consult local and national codes. Conformity and compliance to local and national codes are the responsibility of the installer.

S-TIFAS 6580 Specifications

ID Infinity Drain



SECTION A-A

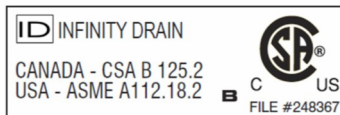
S-TIFAS 6580 SS

80" Complete Kit Includes:

- (80 1/8" l x 2 7/8" w x 1 5/8" h)
- 2 - TA 6540 Tile Insert Frame
- 1 - HC 6572 Stainless Steel Channel
- 2 - HF 65 8" Outlet Section Stainless Steel
- 4 - TJS 65 Stainless Steel Joiner Strip
- 2 - TNAS Threaded Nipple
- 1 - TKEY Lift Out Key
- 1 - Sikaflex 1a Construction Sealant

Infinity Drain

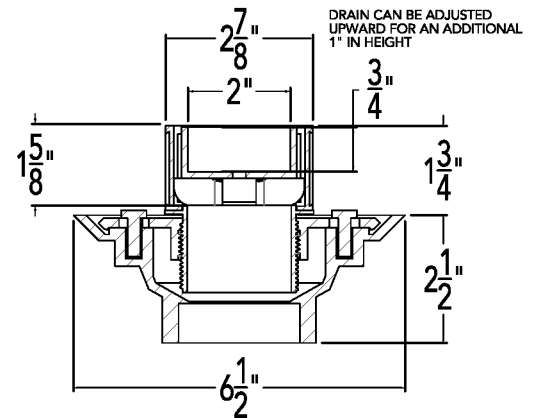
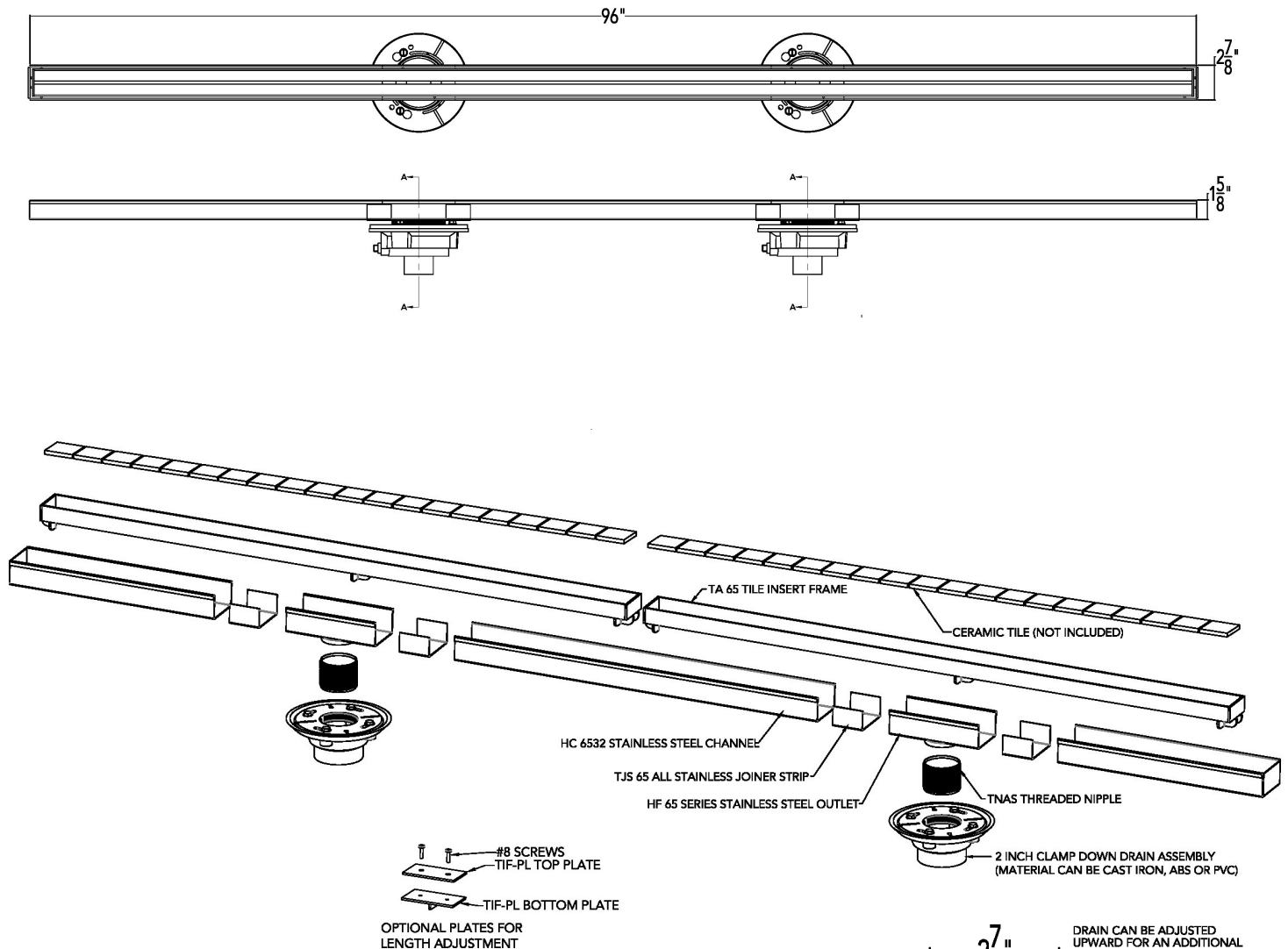
18 Secatoag Avenue
Port Washington, NY 11050
Phone: 516.767.6786
Fax: 516.740.3066
www.InfinityDrain.com



Note: Installer must verify all rough-in dimensions prior to installation and consult local and national codes. Conformity and compliance to local and national codes are the responsibility of the installer.

S-TIFAS 6596 Specifications

ID Infinity Drain



SECTION A-A

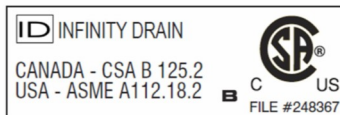
S-TIFAS 6596 SS

96" Complete Kit Includes:

- (96 1/8" l x 2 7/8" w x 1 5/8" h)
- 2 - TA 6548 Tile Insert Frame
- 1 - HC 6588 Stainless Steel Channel
- 2 - HF 65 8" Outlet Section Stainless Steel
- 4 - TJS 65 Stainless Steel Joiner Strip
- 2 - TNAS Threaded Nipple
- 1 - TKEY Lift Out Key
- 1 - Sikaflex 1a Construction Sealant

Infinity Drain

18 Secatoag Avenue
Port Washington, NY 11050
Phone: 516.767.6786
Fax: 516.740.3066
www.InfinityDrain.com



Note: Installer must verify all rough-in dimensions prior to installation and consult local and national codes. Conformity and compliance to local and national codes are the responsibility of the installer.