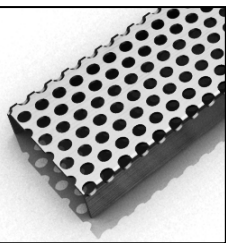


ID Infinity Drain



S-DGAS 65 Series

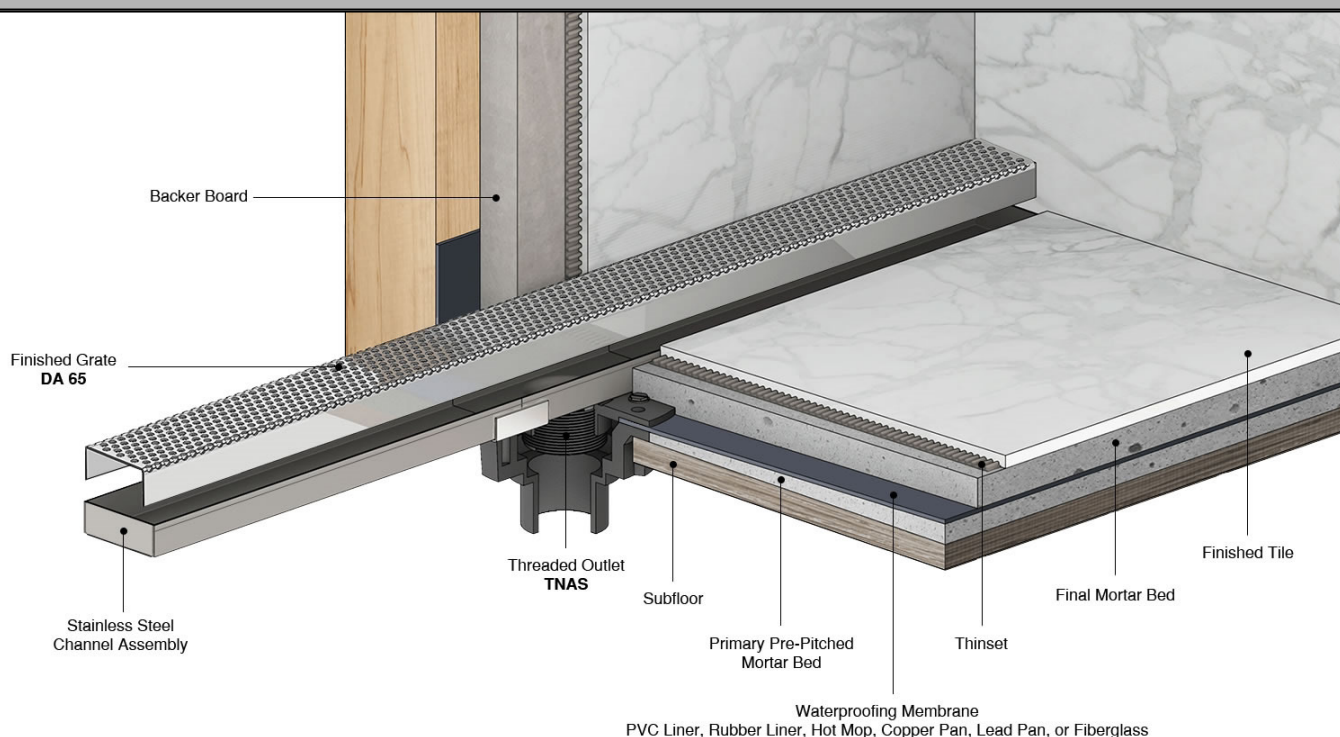
SITE SIZABLE STAINLESS STEEL

- S-DGAS 6536 - 36" Complete Kit
- S-DGAS 6548 - 48" Complete Kit
- S-DGAS 6560 - 60" Complete Kit
- S-DGAS 6572 - 72" Complete Kit
- S-DGAS 6596 - 96" Complete Kit

Features

- Modify length and outlet location on site
- Indoor or outdoor use
- Stainless steel channel
- 304L stainless steel perforated grate
- Works with 2" clamp down floor with 2" throat/strainer size *(not included)*
- Compatible with: PVC Liner, Rubber Liner (Chloraloy®), Hot Mop, Lead Pan, Copper Pan, or Fiberglass
- Flow rate - 9 gpm per outlet
 - Flow rate measured at outlet only. Measurement does not account for water in channel or sheeting on shower floor.
 - Additional outlets can be added and combined into a larger waste line to increase flowrates

Installation

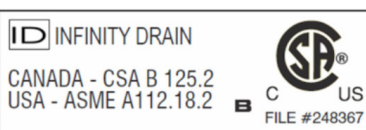


Care & Maintenance

S-DGAS 65 stainless steel linear drain top grates are made of 304L stainless steel. This material is non-porous, hygienic, rust-free and extremely durable. Bar Keepers Friend® and Soft Scrub® are commonly available products that can be used to protect and clean your Satin Stainless drain cover. For stains that have been left for excessive time, stronger cleaning agents such as Compound 302® may be needed. For Polished Stainless and Oil Rubbed Bronze we recommend a mild soap and a soft cloth for cleaning. DO NOT use any abrasive cleaners, scrub pads or allow household cleaning agents, such as bleach, sit on your drain cover for a long period of time. Stainless steel does not rust. External factors, such as contamination from other highly ferrous metals, built up road salt, sea salt, or chlorine may have caused "surface" rust which can be removed using Barkeepers Friend®, Soft Scrub® with Bleach, or Compound 302®. Always follow the directions on the bottle. Follow proper maintenance procedures to prevent excessive surface rust. In areas of frequent exposure to salt, chlorine, and other chemical compounds, maintenance of the stainless grates should be preformed at least 2-3 times per year.

Infinity Drain

18 Secatoag Avenue
Port Washington, NY 11050
Phone: 516.767.6786
Fax: 516.740.3066
www.Infinity Drain.com



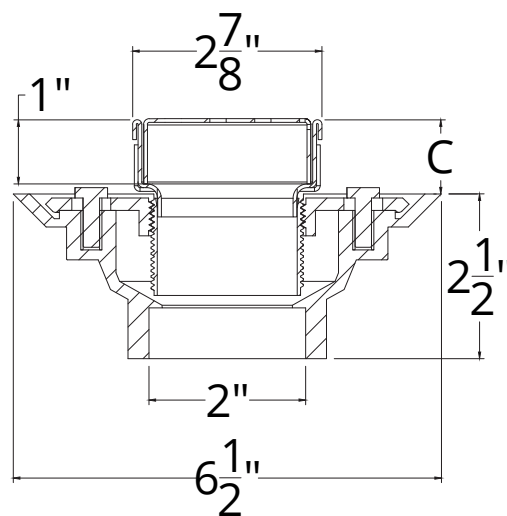
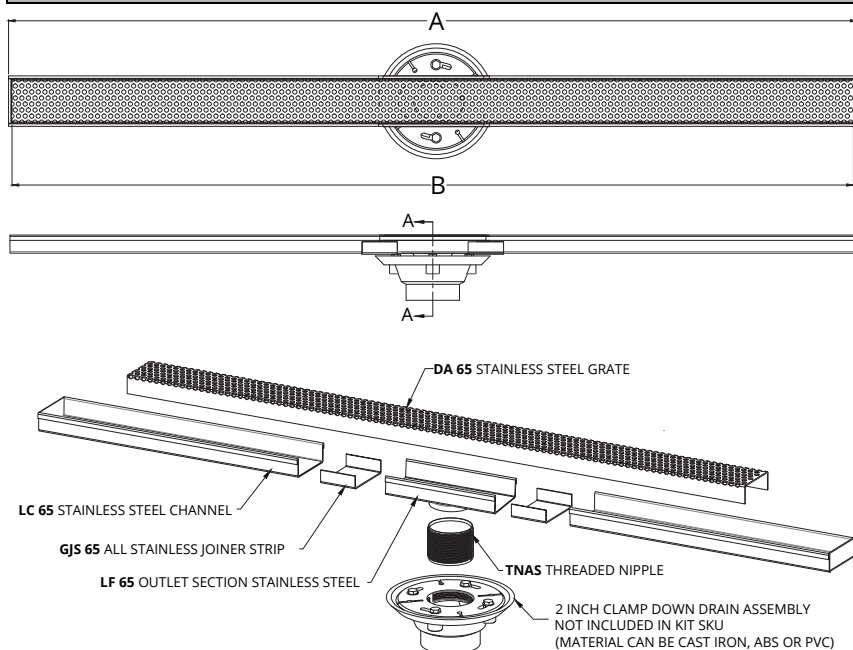
NOTE: Installer must verify all rough-in dimensions prior to installation and consult local and national codes. Conformity and compliance to local and national codes are the responsibility of the installer.

ID Infinity Drain

S-DGAS 6536

S-DGAS 6548

S-DGAS 6560



SECTION A-A

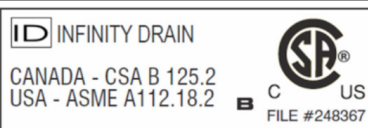
| Model Number | Complete Kit Contents | A Maximum Overall Length | B Maximum Grate Length | C (Minimum Height Above Waterproofing) * All heights can be adjusted upwards an additional 1-1/4" |
|--------------------------------------|--|--------------------------------|------------------------------|---|
| <input type="checkbox"/> S-DGAS 6536 | 1 - DA 6536 Stainless Steel Grate 1 - LC 6528 Stainless Steel Channel 1 - LF 65 8" Outlet Section Stainless Steel 2 - GJS 65 Stainless Steel Joiner Strip 1 - TNAS Threaded Nipple 1 - ZSIKA Sikaflex 1a Sealant 1 - HS 2 Hair Strainer 2 - CT 36 Channel Trim 1 - DKEY Lift Out Key | 36" | 35 7/8" | With CDI 22: 1-1/2" With CDA 22: 1-3/16" With CDP 22: 1-3/16" |
| <input type="checkbox"/> S-DGAS 6548 | 1 - DA 6548 Stainless Steel Grate 1 - LC 6540 Stainless Steel Channel 1 - LF 65 8" Outlet Section Stainless Steel 2 - GJS 65 Stainless Steel Joiner Strip 1 - TNAS Threaded Nipple 1 - ZSIKA Sikaflex 1a Sealant 1 - HS 2 Hair Strainer 2 - CT 48 Channel Trim 1 - DKEY Lift Out Key | 48" | 47 7/8" | With CDI 22: 1-1/2" With CDA 22: 1-3/16" With CDP 22: 1-3/16" |
| <input type="checkbox"/> S-DGAS 6560 | 1 - DA 6560 Stainless Steel Grate 1 - LC 6552 Stainless Steel Channel 1 - LF 65 8" Outlet Section Stainless Steel 2 - GJS 65 Stainless Steel Joiner Strip 1 - TNAS Threaded Nipple 1 - ZSIKA Sikaflex 1a Sealant 1 - HS 2 Hair Strainer 2 - CT 60 Channel Trim 1 - DKEY Lift Out Key | 60" | 59 7/8" | With CDI 22: 1-1/2" With CDA 22: 1-3/16" With CDP 22: 1-3/16" |

Finishes

☐ Satin Stainless

☐ Polished Stainless

Infinity Drain
 18 Secatoag Avenue
 Port Washington, NY 11050
 Phone: 516.767.6786
 Fax: 516.740.3066
 www.Infinity Drain.com

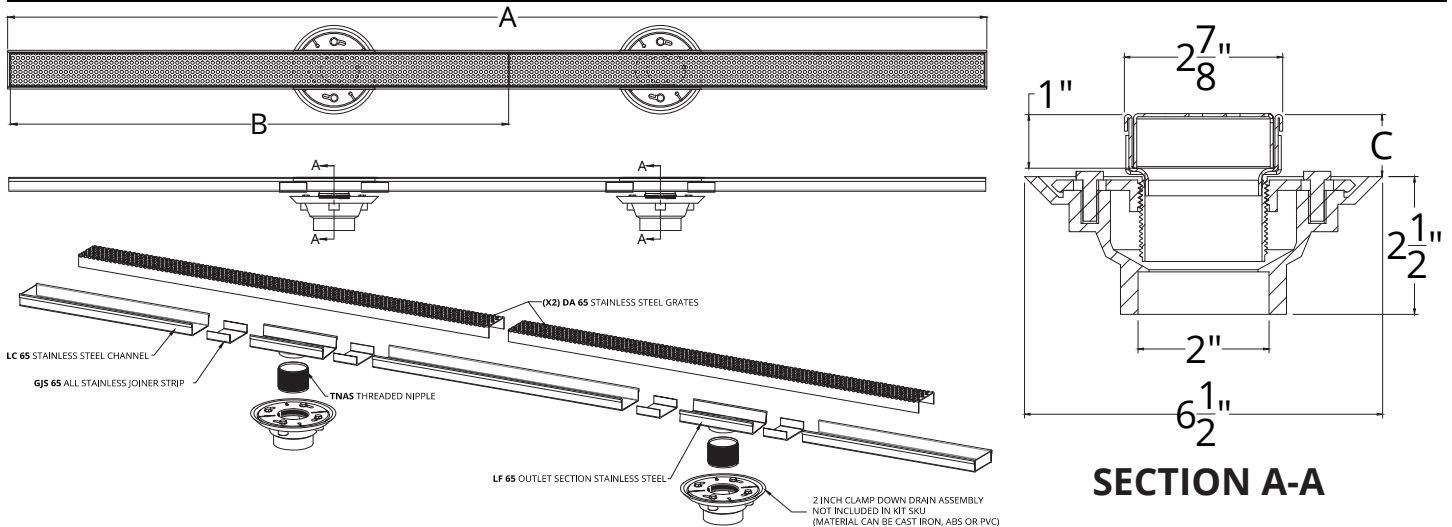


NOTE: Installer must verify all rough-in dimensions prior to installation and consult local and national codes. Conformity and compliance to local and national codes are the responsibility of the installer.

ID Infinity Drain

S-DGAS 6572

S-DGAS 6596



SECTION A-A

| Model Number | Complete Kit Contents | A Maximum Overall Length | B Maximum Grate Length | C (Minimum Height Above Waterproofing) * All heights can be adjusted upwards an additional 1-1/4" |
|--------------|---|-----------------------------|---------------------------|---|
| S-DGAS 6572 | 2 - DA 6536 Stainless Steel Grate 1 - LC 6564 Stainless Steel Channel 2 - LF 65 8" Outlet Section Stainless Steel 4 - GJS 65 Stainless Steel Joiner Strip 2 - TNAS Threaded Nipple 1- ZSIKA Sikaflex 1a Sealant 2 - HS 2 Hair Strainer 2 - CT 72 Channel Trim 1 - DKEY Lift Out Key | 72" | 35 7/8" (x 2) | With CDI 22: 1-1/2" With CDA 22: 1-3/16" With CDP 22: 1-3/16" |
| S-DGAS 6596 | 2 - DA 6548 Stainless Steel Grate 1 - LC 6588 Stainless Steel Channel 2 - LF 65 8" Outlet Section Stainless Steel 4 - GJS 65 Stainless Steel Joiner Strip 2 - TNAS Threaded Nipple 1- ZSIKA Sikaflex 1a Sealant 2 - HS 2 Hair Strainer 2 - CT 96 Channel Trim 1 - DKEY Lift Out Key | 96" | 47 7/8" (x 2) | With CDI 22: 1-1/2" With CDA 22: 1-3/16" With CDP 22: 1-3/16" |

Optional Components

| | |
|--------|--|
| TNAS-2 | 2" Long Stainless Steel Resure Nipple |
| TNAS-3 | 3" Long Stainless Steel Resure Nipple |
| TNAS-4 | 4" Long Stainless Steel Resure Nipple |
| TNRN-P | PVC Threaded Extension Nipple |
| UCP 2 | Universal 2" Clamping Plate |
| UCP 42 | Universal Reducing Plate (Adapts 4" or 3" existing throat size to 2") |

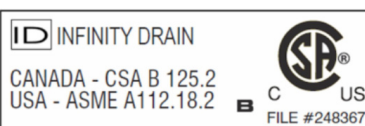
Add Clamp Down Drain

| | |
|--------|----------------------------|
| CDA 22 | Clamp Down Drain ABS |
| CDI 22 | Clamp Down Drain Cast Iron |
| CDP 22 | Clamp Down Drain PVC |

Available components for longer lengths

| | | | |
|---------|----------------------------------|--------|-----------------------------------|
| DA 6536 | 36" Wedge Wire Grate | SE 65 | 2" Stainless Steel End Section |
| DA 6548 | 48" Wedge Wire Grate | GJS 65 | Stainless Steel Joiner Strip |
| DA 6560 | 60" Wedge Wire Grate | SLA 65 | Stainless Steel 90° Angle Joiner |
| SC 6548 | 48" Stainless Open Ended Channel | HS 2 | 2" Hair Strainer |
| SC 6596 | 96" Stainless Open Ended Channel | LF 65 | 8" Stainless Steel Outlet Section |
| LC 6528 | 28" Stainless Closed Channel | TNAS | Stainless Steel Threaded Nipple |
| LC 6540 | 40" Stainless Closed Channel | CT 36 | 36" Channel Trim |
| LC 6552 | 52" Stainless Closed Channel | CT 48 | 48" Channel Trim |
| LC 6564 | 64" Stainless Closed Channel | CT 60 | 60" Channel Trim |
| LC 6588 | 88" Stainless Closed Channel | CT 72 | 72" Channel Trim |
| | | CT 96 | 96" Channel Trim |

Infinity Drain
 18 Secatoag Avenue
 Port Washington, NY 11050
 Phone: 516.767.6786
 Fax: 516.740.3066
 www.Infinity Drain.com



NOTE: Installer must verify all rough-in dimensions prior to installation and consult local and national codes. Conformity and compliance to local and national codes are the responsibility of the installer.