

ID Infinity Drain



Modern Trench Drain

Infinity Drain’s versatile linear drain systems work for shower stalls, pool surrounds, patios, balconies, driveways, and storm drainage, providing an architectural aesthetic and limitless possibilities for your project.

Linear drain systems eliminate the use of a traditional center drain installation, allowing for the floor surface to be pitched in one direction, and resulting in no limitation on tile size or slab material. Infinity Drain offers the only "Site Sizeable" linear drain, which allows for the channel length and outlet placement to be modified on-site for easy set-up.



Benefits

By pitching a floor in one direction, the possibilities are infinite:

- Create a zero-threshold, curbless shower
- Meets ADA requirements for handicap shower entry
- No boundaries on design because of drain location
- No limitation on tile size or slab material
- Drains water more efficiently

About Infinity Drain

Since 2007, Infinity Drain has established a reputation for design-centric, premium quality decorative shower drains. With award winning designs and innovations, including the "Site Sizeable" linear drain, Infinity Drain is helping to shape barrier free bathroom design. From hand polishing decorative grates to custom fabricating to your exacting specifications, Infinity Drain offers the broadest selection of decorative choices and installation options. Infinity Drain products are proudly fabricated in Long Island, NY, USA.



Table of Contents

Grate Styles	8-13
Product by Installation Type	14-27
Linear Drain Guide.....	28-31
Outdoor Installation	32-33
Custom Fabrication	34
Additional Features	35





Incorporate flooring material into the Tile Insert Frame (TIF) to make the drain disappear. The linear drain is installed exactly wall-to-wall.



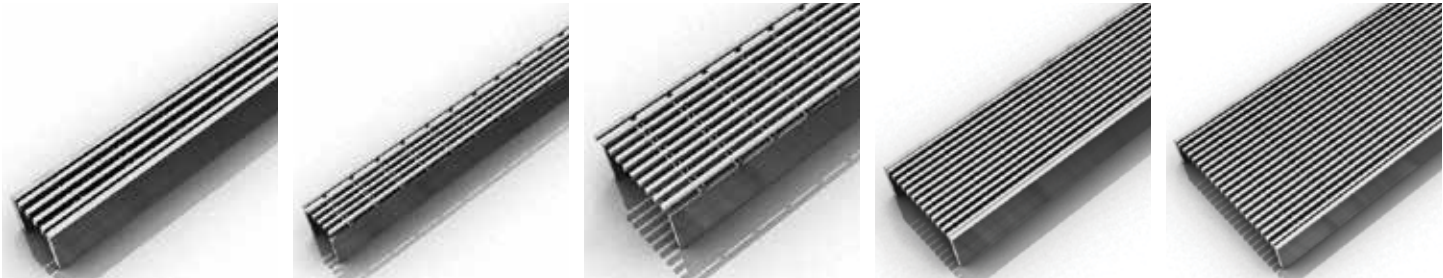
Barrier free zero-threshold installation against the wall. The entire floor is sloped toward the linear drain.



Create a wet room by running the linear drain along both the 'dry' side and 'wet' side of the bathroom. The entire floor is waterproofed and sloped toward the linear drain.



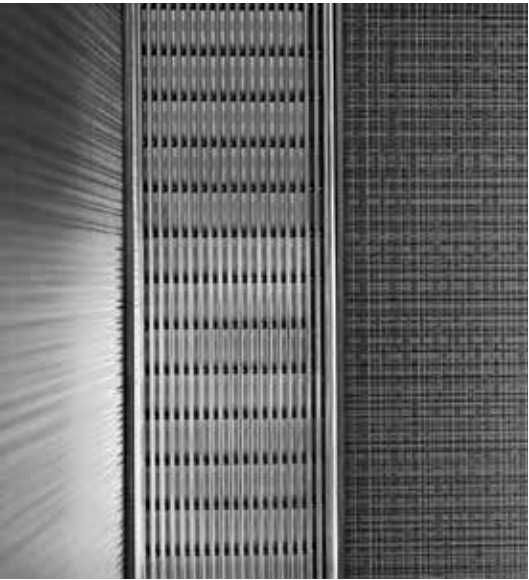
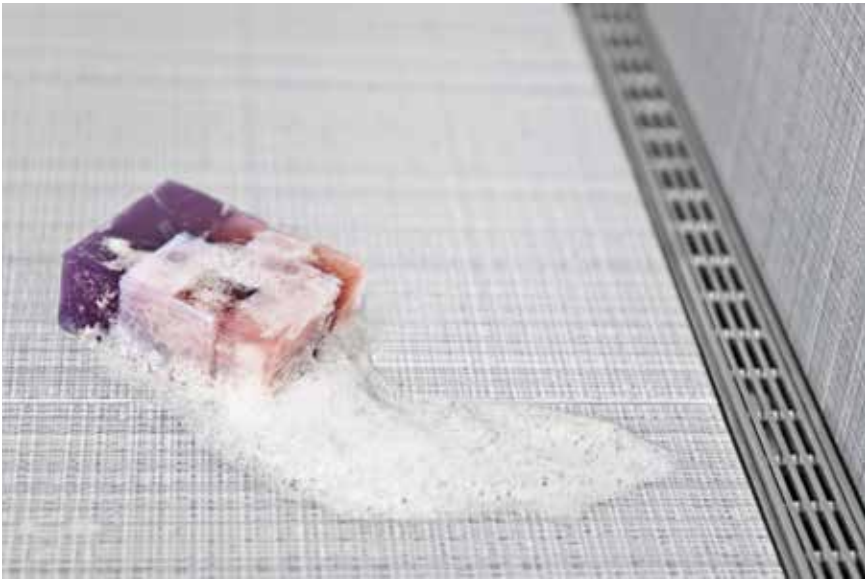
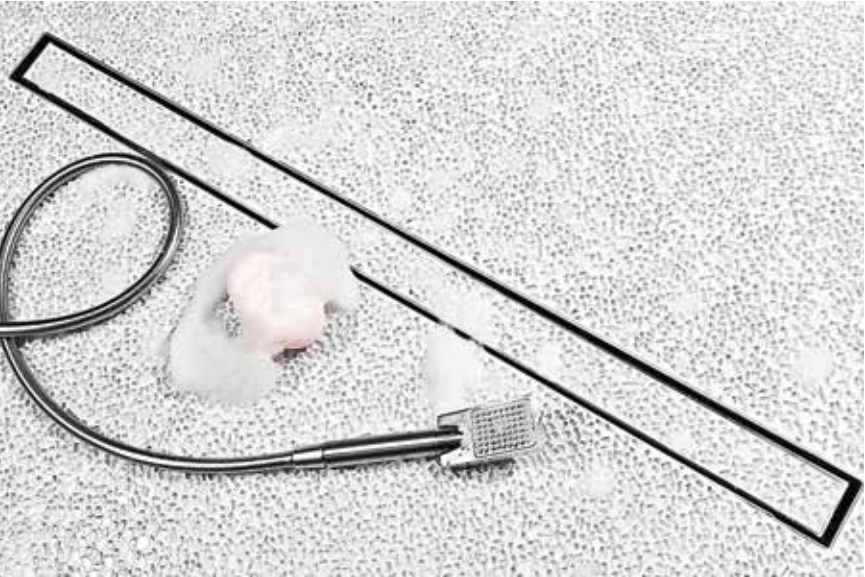
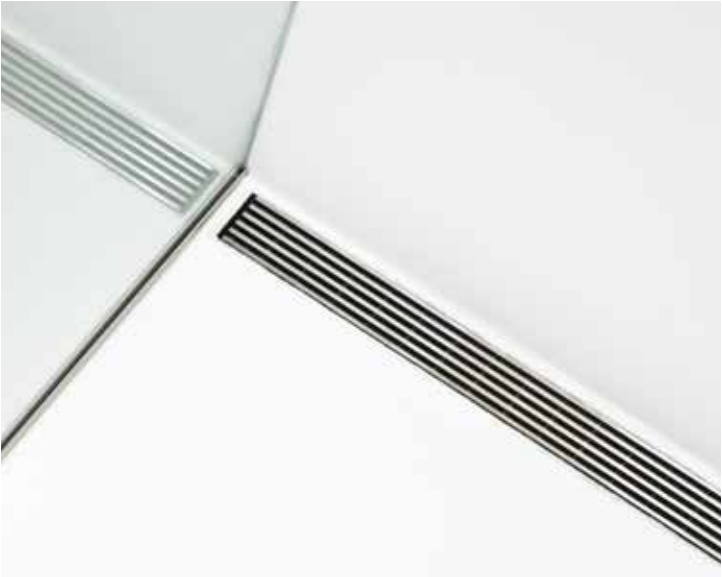
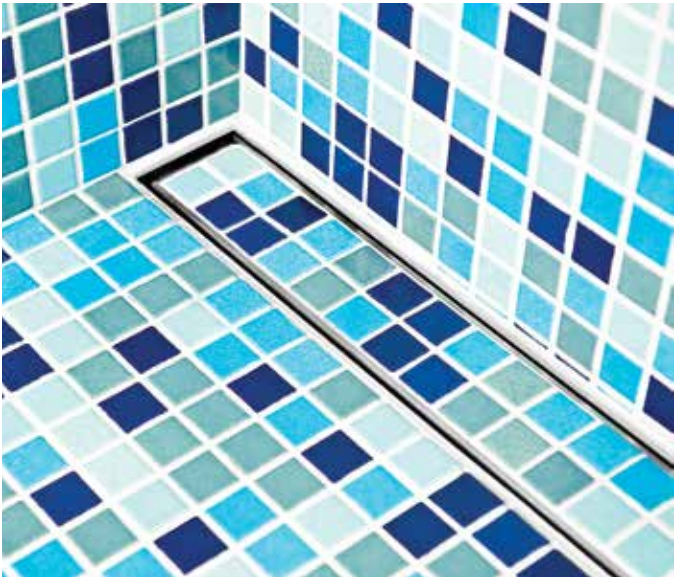
Barrier free zero-threshold installation. The entire floor is sloped toward the linear drain. Both 'wet' and 'dry' areas are waterproofed.



Grate Width 2 mm wire	1"	Grate Width 3 mm wire	1½"	Grate Width 3 mm wire	2½"	Grate Width 2 mm wire	2½"	Grate Width 2 mm wire	3¾", 4¼"
12 gauge, 316 Stainless Steel		12 gauge, 316 Stainless Steel		12 gauge, 316 Stainless Steel		12 gauge, 316 Stainless Steel		12 gauge, 316 Stainless Steel	
Installation Types:		Installation Types:		Installation Types:		Installation Types:		Installation Types:	
Fixed Flange	(FF)	Site Sizable	(S)	Site Sizable	(S)	Site Sizable	(S)	Site Sizable	(S)
Side Outlet	(FT)					Fixed Length	(FX)	Fixed Length	(FX)
						Fixed Flange	(FF)	Fixed Flange	(FF)
						Side Outlet	(FT)		

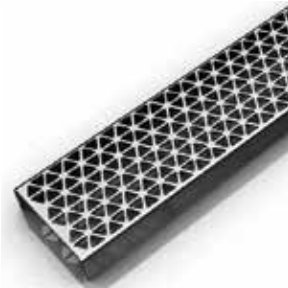


Grate Width 12 gauge, 316 Stainless Steel	2½"
Installation Types:	
Site Sizable	(S)
Fixed Length	(FX)
Fixed Flange	(FF)
Side Outlet	(FT)





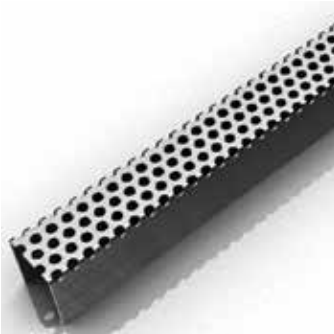
Grate Width 1"
14 gauge,
304 Stainless Steel
Installation Types:
Fixed Flange (FF)
Side Outlet (FT)



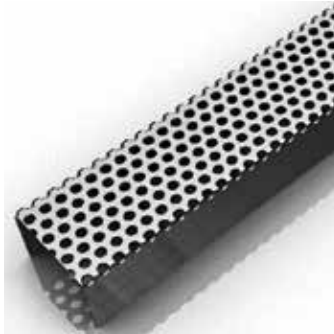
Grate Width 2 1/2"
14 gauge,
304 Stainless Steel
Installation Types:
Fixed Length (FX)
Fixed Flange (FF)
Side Outlet (FT)



Grate Width 1"
16 gauge,
304 Stainless Steel
Installation Types:
Fixed Length (FX)
Fixed Flange (FF)



Grate Width 1 1/2"
16 gauge,
304 Stainless Steel
Installation Types:
Site Sizable (S)



Grate Width 2 1/2"
16 gauge,
304 Stainless Steel
Installation Types:
Site Sizable (S)



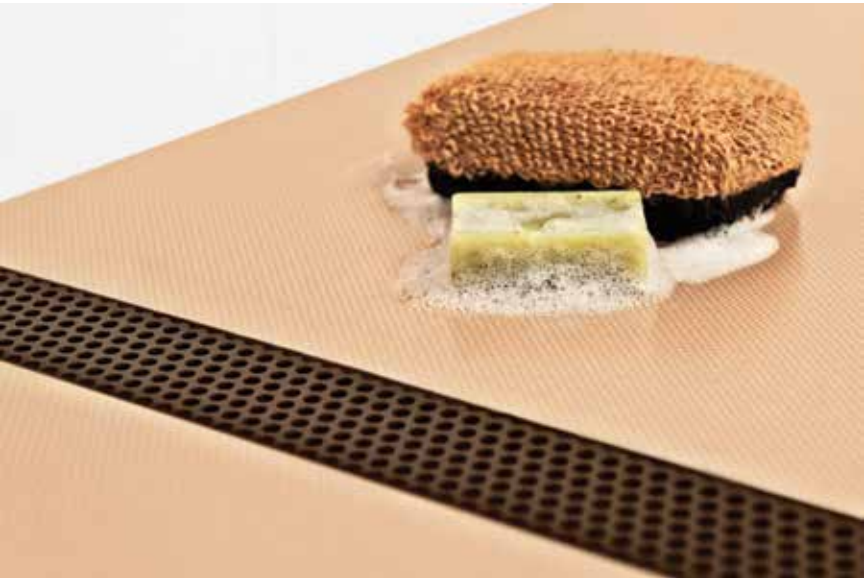
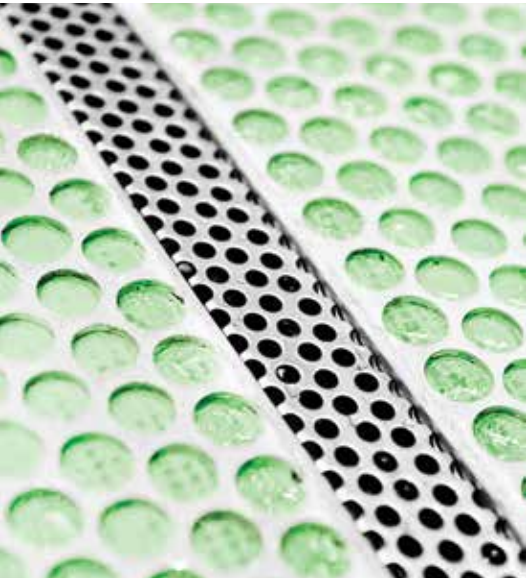
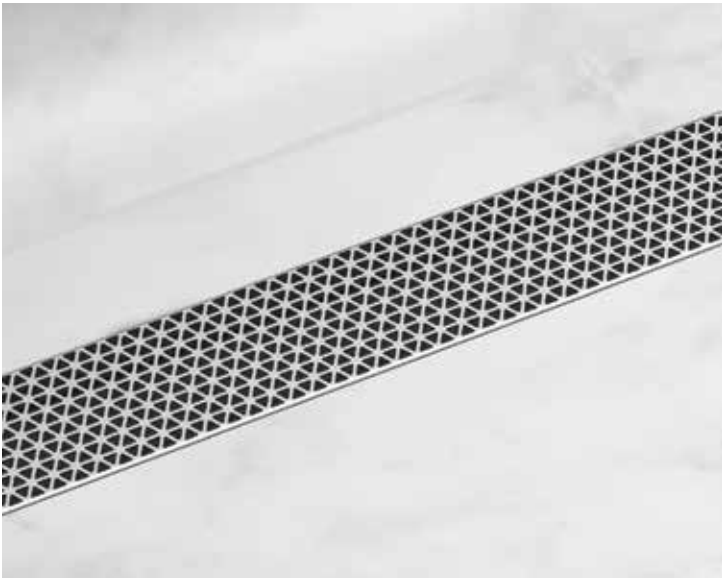
Grate Width 2 1/2"
16 gauge,
304 Stainless Steel
Installation Types:
Site Sizable (S)
Fixed Length (FX)
Fixed Flange (FF)
Side Outlet (FT)



Marc Newson.

Marc Newson, one of the most acclaimed and influential designers of his generation, has collaborated with Infinity Drain on an exclusive line of linear drain covers called the MN Series. He has worked across a wide range of disciplines, creating everything from furniture and household objects, to bicycles and cars, private and commercial aircraft, yachts, various architectural commissions, and signature sculptural pieces for clients across the globe.

Marc Newson was included in Time magazine's 100 Most Influential People in the World and has received numerous awards and distinctions. His work is present in many major museum collections, including the MoMA in New York, London's Design Museum and V&A, and the Centre Georges Pompidou.

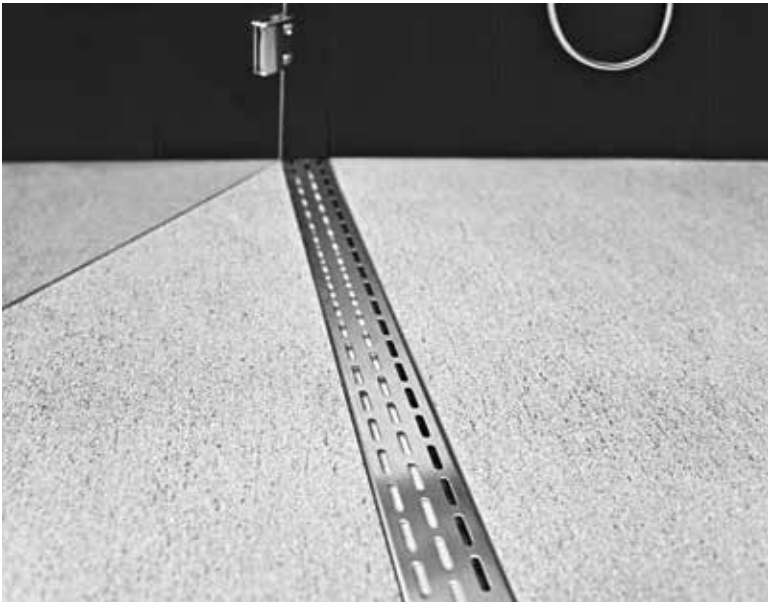
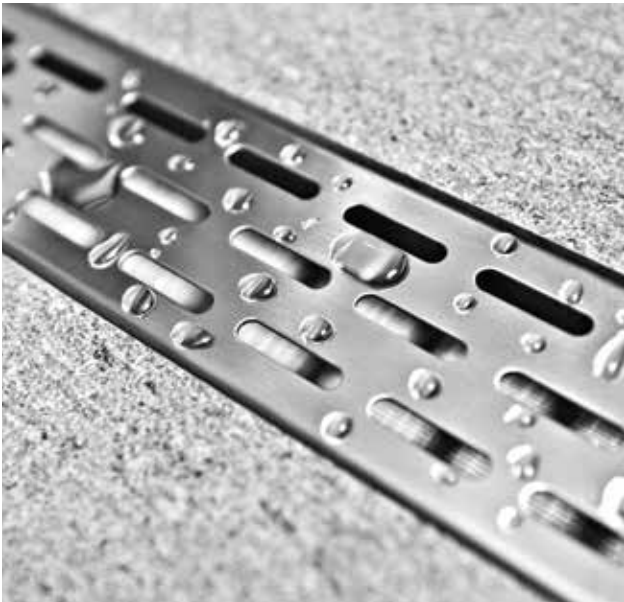




Grate Width 1"
16 gauge,
304 Stainless Steel
Installation Types:
Fixed Flange (FF)
Side Outlet (FT)



Grate Width 2 1/2 "
16 gauge,
304 Stainless Steel
Installation Types:
Fixed Length (FX)
Fixed Flange (FF)
Side Outlet (FT)



Size 5"x5"
16 gauge,
304 Stainless Steel
ABS/SS Body
2" Throat
Installation Types:
Center Drain (TD)
Center Drain (TDB)



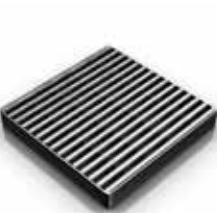
Size 5"x5"
12 gauge,
316 Stainless Steel
Stainless Steel Body
4" Throat
Installation Types:
Center Drain (TD)
Center Drain (TDB)



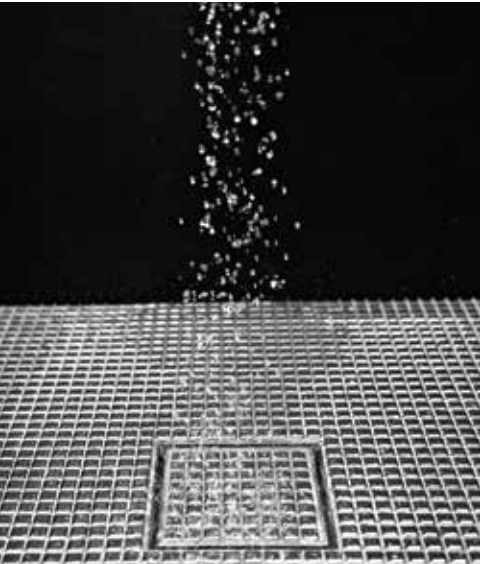
Size 8"x8"
12 gauge,
316 Stainless Steel
Stainless Steel Body
4" Throat
Installation Types:
Center Drain (TD)
Center Drain (TDB)



Size 5"
12 gauge,
316 Stainless Steel
Stainless Steel Body
4" Throat
Installation Types:
Center Drain (TD)
Center Drain (TDB)



Size 5"x5"
12 gauge,
316 Stainless Steel
Stainless Steel Body
2" Throat
Installation Types:
Center Drain (TD)
Center Drain (TDB)



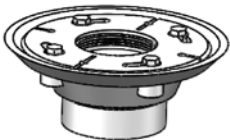
SITE SIZABLE (S) PVC CHANNEL

Installation

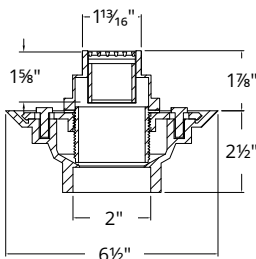
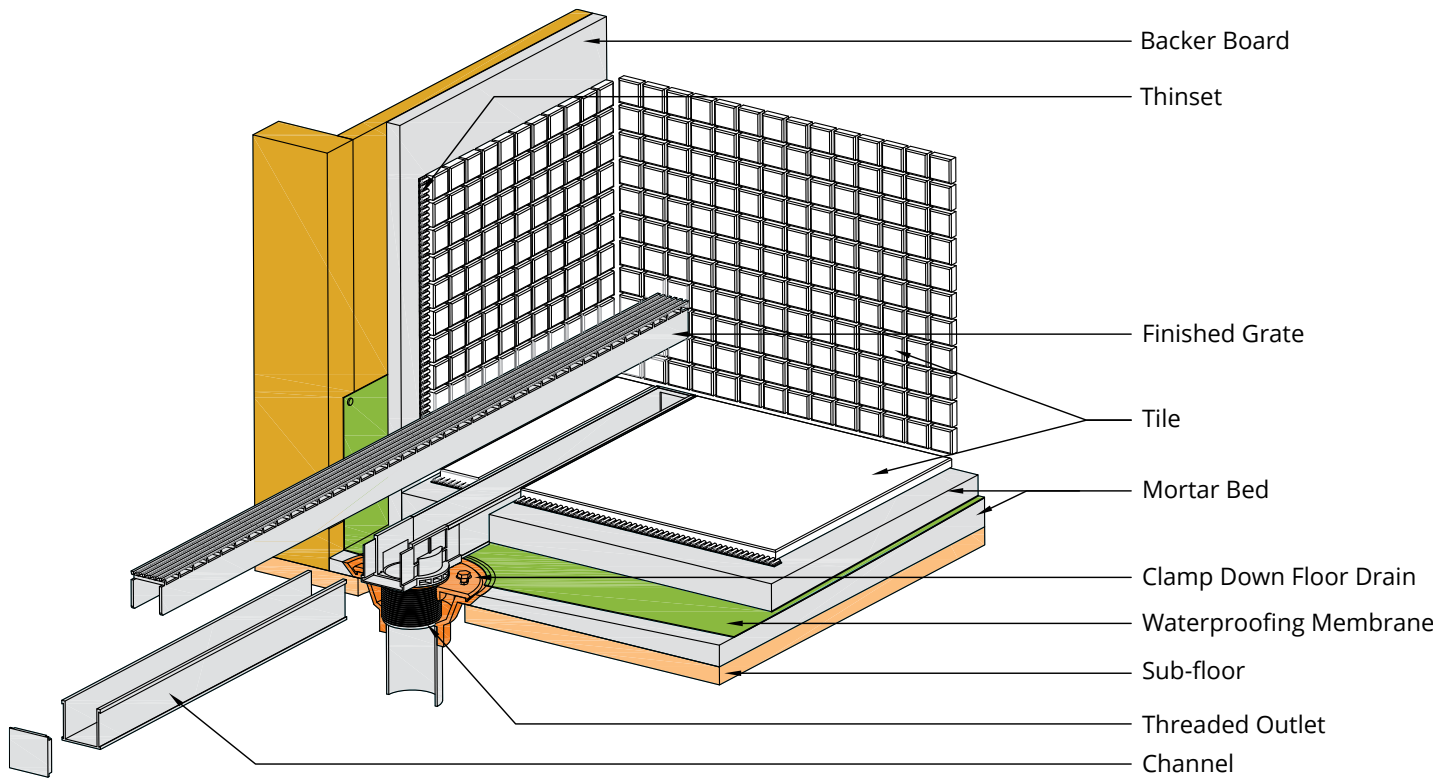
For an exact wall-to-wall installation. The channel and grate length can be cut on-site, and the drain outlet can be located anywhere along the channel run. Available in kit lengths or sold as individual components.

Waterproofing via clamping floor drain:

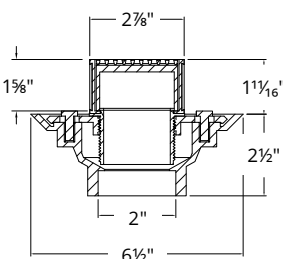
- Copper Pan
 - Hot Mop
 - PVC Liner
- Fiberglass
 - Lead Pan
 - Rubber Liner (Chloraloy®)



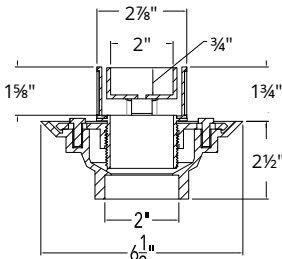
Clamping floor drain sold separately



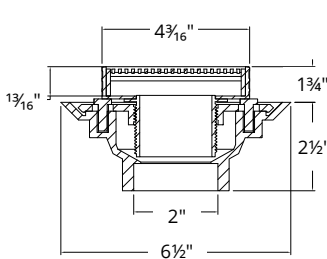
S-AG 38, S-DG 38



S-AG 65, S-DG 65



S-TIF 65



S-AG 100

SITE SIZABLE (S) PVC CHANNEL

	Series	Kit Length	SKU	Finish Options	GPM
 1 13/16" W x 1 5/8" D	S-AG 38 Grate: 12 gauge, 316 stainless steel	36"	S-AG 3836	Satin Stainless (SS) Polished Stainless (PS) Lifetime Oil Rubbed Bronze (ORB)	9 GPM per outlet
		48"	S-AG 3848		
		60"	S-AG 3860		
		96"	S-AG 3896		
 2 7/8" W x 1 5/8" D	S-AG 65 Grate: 12 gauge, 316 stainless steel	36"	S-AG 6536	Satin Stainless (SS) Polished Stainless (PS) Lifetime Oil Rubbed Bronze (ORB)	16 GPM per outlet
		48"	S-AG 6548		
		60"	S-AG 6560		
		96"	S-AG 6596		
 4 3/16" W x 1 13/16" D	S-AG 100 Grate: 12 gauge, 316 stainless steel	48"	S-AG 10048	Satin Stainless (SS) Polished Stainless (PS)	9 GPM per outlet
		96"	S-AG 10096		
 1 13/16" W x 1 5/8" D	S-DG 38 Grate: 16 gauge, 304 stainless steel	48"	S-DG 3848	Satin Stainless (SS) Polished Stainless (PS) Lifetime Oil Rubbed Bronze (ORB)	9 GPM per outlet
		60"	S-DG 3860		
		96"	S-DG 3896		
 2 7/8" W x 1 5/8" D	S-DG 65 Grate: 16 gauge, 304 stainless steel	48"	S-DG 6548	Satin Stainless (SS) Polished Stainless (PS) Lifetime Oil Rubbed Bronze (ORB)	16 GPM per outlet
		60"	S-DG 6560		
		96"	S-DG 6596		
 2 7/8" W x 1 5/8" D	S-TIF 65 Grate: 12 gauge, 316 stainless steel	40"	S-TIF 6540	Satin Stainless (SS) Polished Stainless (PS)	9 GPM per outlet
		48"	S-TIF 6548		
		60"	S-TIF 6560		
		80"	S-TIF 6580		
		96"	S-TIF 6596		

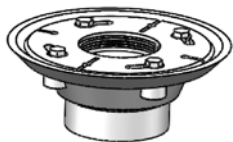
SITE SIZABLE (S) STAINLESS STEEL CHANNEL

Installation

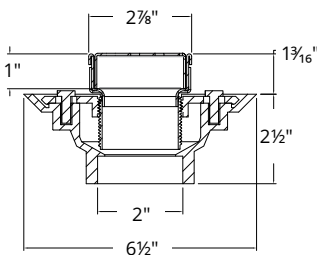
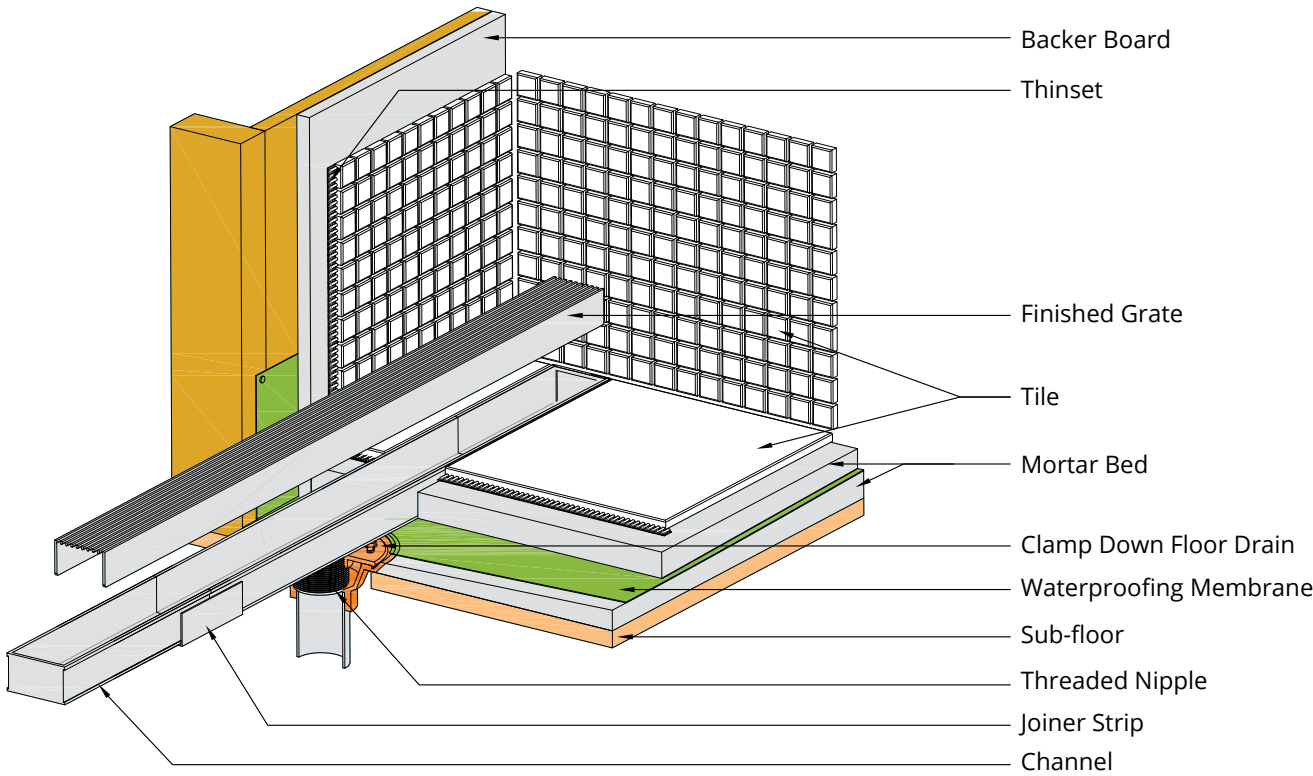
For an exact wall-to-wall installation. The channel and grate length can be cut on-site, and the drain outlet can be located anywhere along the channel run. Available in kit lengths or sold as individual components.

Waterproofing via clamping floor drain:

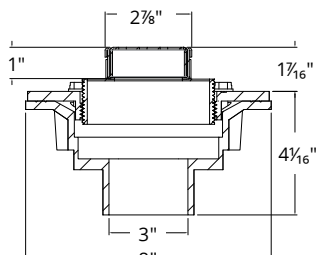
- Copper Pan
 - Hot Mop
 - PVC Liner
- Fiberglass
 - Lead Pan
 - Rubber Liner (Chloraloy®)



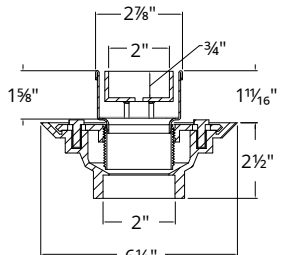
Clamping floor drain sold separately (Except 99 Series)



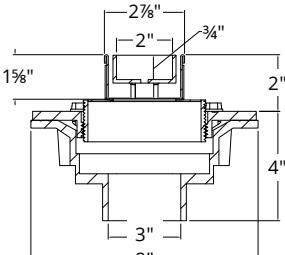
S-DGAS 65, S-AS 65



S-DGAS 99, S-AS 99



S-TIFAS 65



S-TIFAS 99

SITE SIZABLE (S) STAINLESS STEEL CHANNEL

	Series	Kit Length	SKU	Finish Options	GPM
 2 7/8" W x 1" D	S-DGAS 65 Grate: 16 gauge, 304 stainless steel	36"	S-DGAS 6536	Satin Stainless (SS) Polished Stainless (PS)	9 GPM per outlet
		48"	S-DGAS 6548		
		60"	S-DGAS 6560		
		72"	S-DGAS 6572		
		96"	S-DGAS 6596		
 2 7/8" W x 1" D	S-DGAS 99 High Flow Grate: 16 gauge, 304 stainless steel	36"	S-DGAS 9936	Satin Stainless (SS) Polished Stainless (PS)	21 GPM per outlet
		48"	S-DGAS 9948		
		60"	S-DGAS 9960		
		72"	S-DGAS 9972		
		96"	S-DGAS 9996		
 2 7/8" W x 1" D	S-AS 65 Grate: 12 gauge, 316 stainless steel	36"	S-AS 6536	Satin Stainless (SS) Polished Stainless (PS)	9 GPM per outlet
		48"	S-AS 6548		
		60"	S-AS 6560		
		72"	S-AS 6572		
		96"	S-AS 6596		
 2 7/8" W x 1" D	S-AS 99 High Flow Grate: 12 gauge, 316 stainless steel	36"	S-AS 9936	Satin Stainless (SS) Polished Stainless (PS)	21 GPM per outlet
		48"	S-AS 9948		
		60"	S-AS 9960		
		72"	S-AS 9972		
		96"	S-AS 9996		
 2 7/8" W x 1 5/8" D	S-TIFAS 65 Grate: 12 gauge, 316 stainless steel	40"	S-TIFAS 6540	Satin Stainless (SS) Polished Stainless (PS)	9 GPM per outlet
		48"	S-TIFAS 6548		
		60"	S-TIFAS 6560		
		80"	S-TIFAS 6580		
		96"	S-TIFAS 6596		
 2 7/8" W x 1 5/8" D	S-TIFAS 99 High Flow Grate: 12 gauge, 316 stainless steel	40"	S-TIFAS 9940	Satin Stainless (SS) Polished Stainless (PS)	21 GPM per outlet
		48"	S-TIFAS 9948		
		60"	S-TIFAS 9960		
		80"	S-TIFAS 9980		
		96"	S-TIFAS 9996		

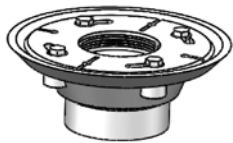
FIXED LENGTH (FX)

Installation

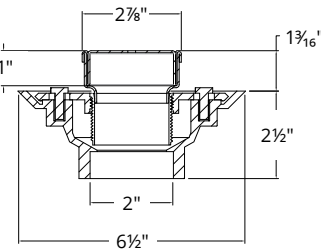
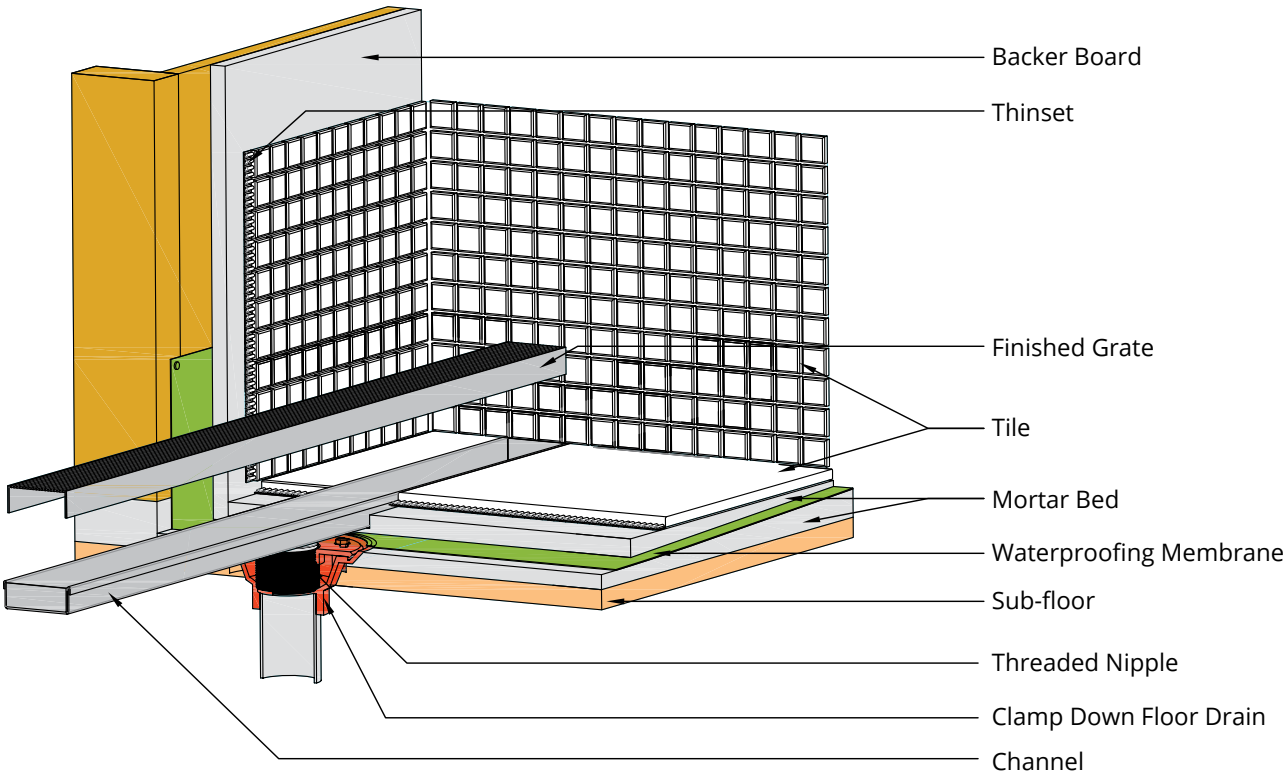
A pre-pitched channel with a set outlet location. Standard kit sizes or custom fabrication are available.

Waterproofing via clamping floor drain:

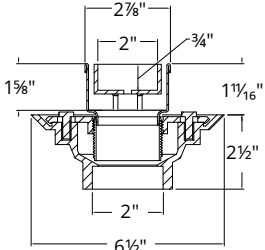
- Copper Pan
 - Hot Mop
 - PVC Liner
- Fiberglass
 - Lead Pan
 - Rubber Liner (Chloraloy®)



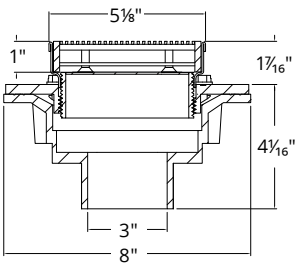
Clamping floor drain
sold separately
(Except 125 Series)



FXED 65, FXDG 65,
FXMN 65, FXAS 65



FXTIF 65



FXAS 125

FIXED LENGTH (FX)

	Series	Kit Length	SKU	Finish Options	GPM
Offset Oval  2 7/8" W x 1" D	FXED 65 Grate: 16 gauge, 304 stainless steel	32"	FXED 6532	Satin Stainless (SS) Polished Stainless (PS) Lifetime Oil Rubbed Bronze (ORB)	9 GPM
		36"	FXED 6536		
		42"	FXED 6542		
		48"	FXED 6548		
		60"	FXED 6560		
Circle  2 7/8" W x 1" D	FXDG 65 Grate: 16 gauge, 304 stainless steel	32"	FXDG 6532	Satin Stainless (SS) Polished Stainless (PS)	9 GPM
		36"	FXDG 6536		
		42"	FXDG 6542		
		48"	FXDG 6548		
		60"	FXDG 6560		
<i>More Newcom.</i>  2 7/8" W x 1" D	FXMN 65 Grate: 14 gauge, 304 stainless steel	32"	FXMN 6532	Satin Stainless (SS) Polished Stainless (PS) Lifetime Oil Rubbed Bronze (ORB) Matte White (WH) Matte Black (BK)	9 GPM
		36"	FXMN 6536		
		42"	FXMN 6542		
		48"	FXMN 6548		
		60"	FXMN 6560		
2mm Wedge Wire  2 7/8" W x 1" D	FXAS 65 Grate: 12 gauge, 316 stainless steel	32"	FXAS 6532	Satin Stainless (SS) Polished Stainless (PS) Matte White (WH) Matte Black (BK)	9 GPM
		36"	FXAS 6536		
		42"	FXAS 6542		
		48"	FXAS 6548		
		60"	FXAS 6560		
2mm Wedge Wire  5 1/8" W x 1" D	FXAS 125 Grate: 12 gauge, 316 stainless steel	32"	FXAS 12532	Satin Stainless (SS) Polished Stainless (PS)	21 GPM
		36"	FXAS 12536		
		42"	FXAS 12542		
		48"	FXAS 12548		
		60"	FXAS 12560		
Tile Insert Frame  2 7/8" W x 1 5/8" D	FXTIF 65 Grate: 12 gauge, 316 stainless steel	20"	FXTIF 6520	Satin Stainless (SS) Polished Stainless (PS)	9 GPM
		40"	FXTIF 6540		
		48"	FXTIF 6548		
		60"	FXTIF 6560		

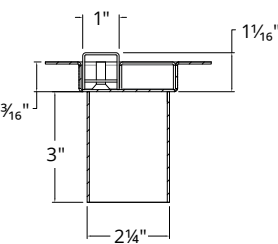
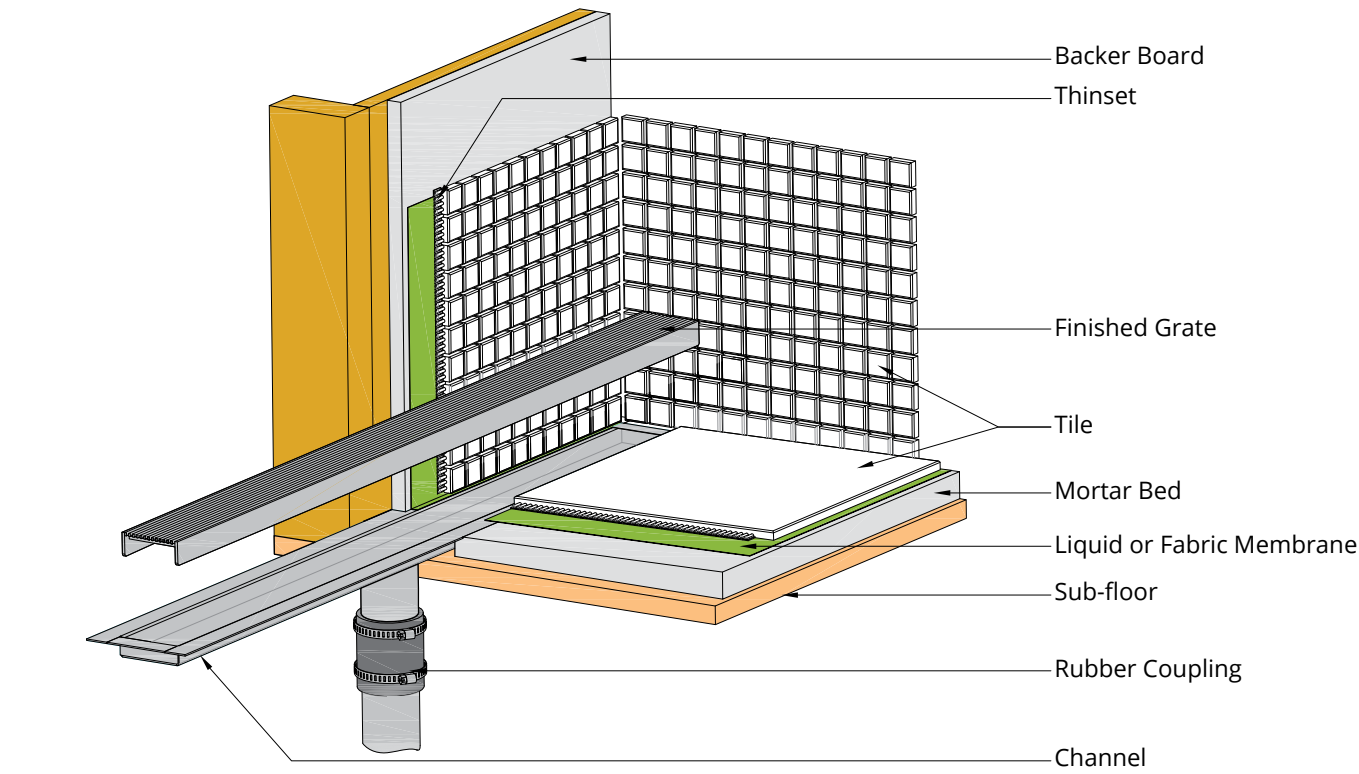
FIXED FLANGE (FF)

Installation

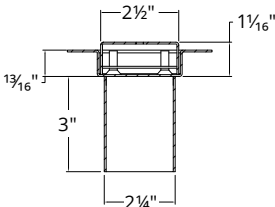
A pre-pitched flanged channel with a set outlet location. Standard kits sizes or custom fabrication are available. Install with a liquid membrane or fabric sheet waterproofing methods (Bonded Flange). Outlet is vertical (down).

Waterproofing:

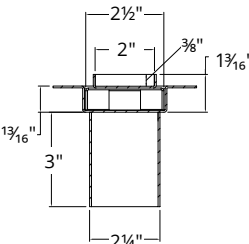
- Liquid Membrane
- Fabric Sheet Membrane



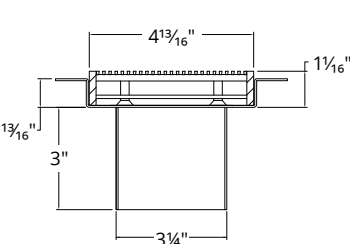
FFED 25, FFDG 25,
FFMN 25, FFAS 25



FFED 65, FFDG 65,
FFMN 65, FFAS 65



FFTIF 65



FFAS 125

FIXED FLANGE (FF)

	Series	Kit Length	SKU	Finish Options	GPM
Offset Oval  1" W x 1" D	FFED 25 Grate: 16 gauge, 304 stainless steel	32"	FFED 2532	Satin Stainless (SS) Polished Stainless (PS)	9 GPM
		36"	FFED 2536		
		42"	FFED 2542		
		48"	FFED 2548		
		60"	FFED 2560		
Offset Oval  2 1/2" W x 1" D	FFED 65 Grate: 16 gauge, 304 stainless steel	24"	FFED 6524	Satin Stainless (SS) Polished Stainless (PS) Lifetime Oil Rubbed Bronze (ORB)	9 GPM
		32"	FFED 6532		
		36"	FFED 6536		
		42"	FFED 6542		
		48"	FFED 6548		
Circle  1" W x 1" D	FFDG 25 Grate: 16 gauge, 304 stainless steel	32"	FFDG 2532	Satin Stainless (SS) Polished Stainless (PS)	9 GPM
		36"	FFDG 2536		
		42"	FFDG 2542		
		48"	FFDG 2548		
		60"	FFDG 2560		
Circle  2 1/2" W x 1" D	FFDG 65 Grate: 16 gauge, 304 stainless steel	32"	FFDG 6532	Satin Stainless (SS) Polished Stainless (PS)	9 GPM
		36"	FFDG 6536		
		42"	FFDG 6542		
		48"	FFDG 6548		
		60"	FFDG 6560		
<i>ManeNewson.</i>  1" W x 1" D	FFMN 25 Grate: 14 gauge, 304 stainless steel	32"	FFMN 2532	Satin Stainless (SS) Polished Stainless (PS) Lifetime Oil Rubbed Bronze (ORB) Matte White (WH) Matte Black (BK)	9 GPM
		36"	FFMN 2536		
		42"	FFMN 2542		
		48"	FFMN 2548		
		60"	FFMN 2560		
<i>ManeNewson.</i>  2 1/2" W x 1" D	FFMN 65 Grate: 14 gauge, 304 stainless steel	32"	FFMN 6532	Satin Stainless (SS) Polished Stainless (PS) Lifetime Oil Rubbed Bronze (ORB) Matte White (WH) Matte Black (BK)	9 GPM
		36"	FFMN 6536		
		42"	FFMN 6542		
		48"	FFMN 6548		
		60"	FFMN 6560		
2mm Wedge Wire  1" W x 1" D	FFAS 25 Grate: 12 gauge, 316 stainless steel	32"	FFAS 2532	Satin Stainless (SS) Polished Stainless (PS) Matte White (WH) Matte Black (BK)	9 GPM
		36"	FFAS 2536		
		42"	FFAS 2542		
		48"	FFAS 2548		
		60"	FFAS 2560		
2mm Wedge Wire  2 1/2" W x 1" D	FFAS 65 Grate: 12 gauge, 316 stainless steel	24"	FFAS 6524	Satin Stainless (SS) Polished Stainless (PS) Matte White (WH) Matte Black (BK)	9 GPM
		32"	FFAS 6532		
		36"	FFAS 6536		
		42"	FFAS 6542		
		48"	FFAS 6548		
2mm Wedge Wire  4 13/16" W x 1" D	FFAS 125 Grate: 12 gauge, 316 stainless steel	32"	FFAS 12532	Satin Stainless (SS) Polished Stainless (PS)	21 GPM
		36"	FFAS 12536		
		42"	FFAS 12542		
		48"	FFAS 12548		
		60"	FFAS 12560		
Tile Insert Frame  2 1/2" W x 1 1/8" D	FFTIF 65 Grate: 16 gauge, 304 stainless steel	24"	FFTIF 6524	Satin Stainless (SS) Polished Stainless (PS)	9 GPM
		32"	FFTIF 6532		
		36"	FFTIF 6536		
		42"	FFTIF 6542		
		48"	FFTIF 6548		
		60"	FFTIF 6560		

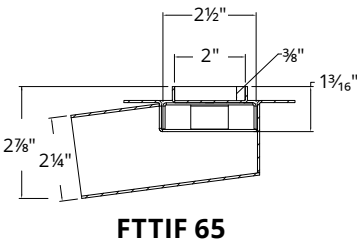
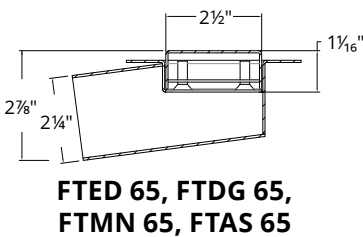
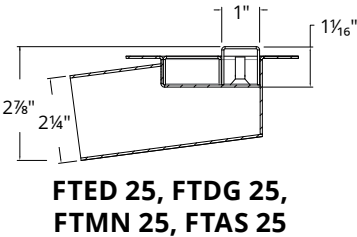
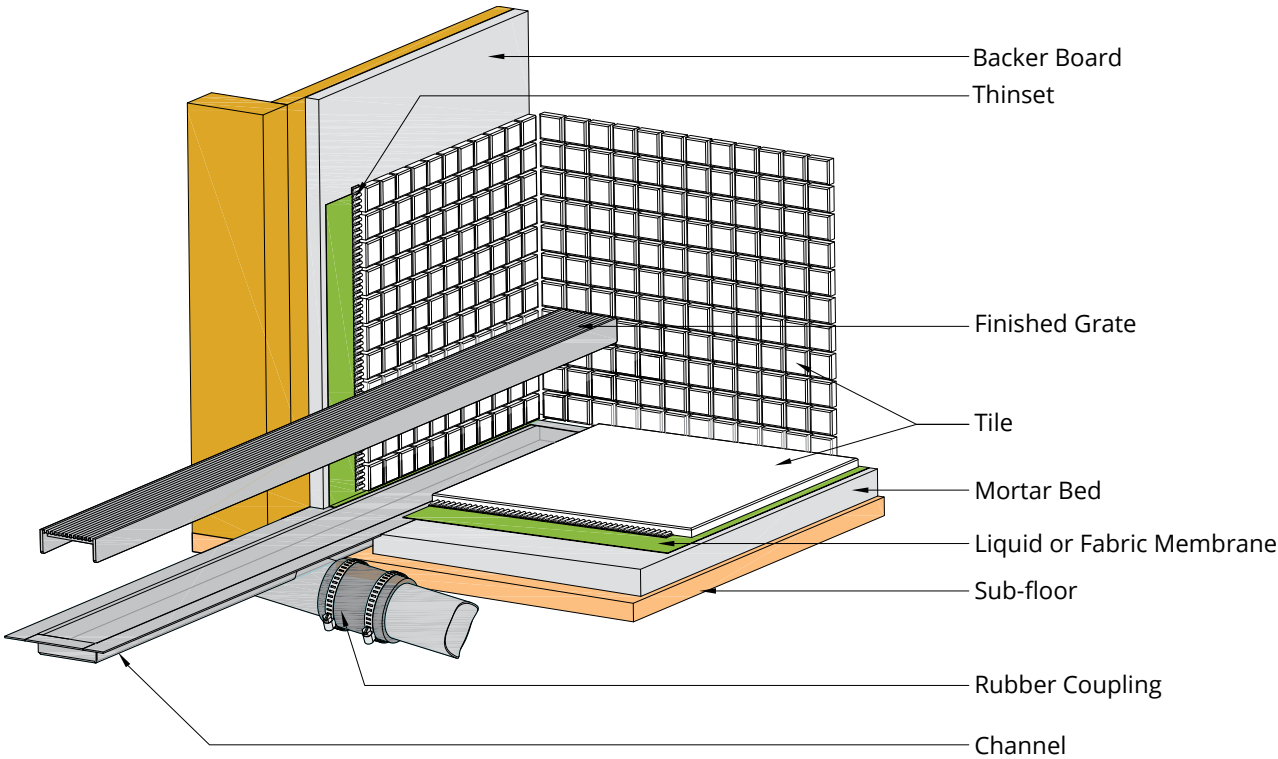
SIDE OUTLET (FT)

Installation

A pre-pitched flanged channel with a set outlet location. Standard kits sizes or custom fabrication are available. Install with a liquid membrane or fabric sheet waterproofing methods (Bonded Flange). Outlet is horizontal (side).

Waterproofing:

- Liquid Membrane
- Fabric Sheet Membrane



SIDE OUTLET (FT)

	Series	Kit Length	SKU	Finish Options	GPM
 1" W x 1" D	FTED 25 Grate: 16 gauge, 304 stainless steel	32"	FTED 2532	Satin Stainless (SS) Polished Stainless (PS)	9 GPM
		36"	FTED 2536		
		42"	FTED 2542		
		48"	FTED 2548		
		60"	FTED 2560		
 2½" W x 1" D	FTED 65 Grate: 16 gauge, 304 stainless steel	24"	FTED 6524	Satin Stainless (SS) Polished Stainless (PS) Lifetime Oil Rubbed Bronze (ORB)	9 GPM
		32"	FTED 6532		
		36"	FTED 6536		
		42"	FTED 6542		
		48"	FTED 6548		
		60"	FTED 6560		
 1" W x 1" D	FTDG 25 Grate: 16 gauge, 304 stainless steel	32"	FTDG 2532	Satin Stainless (SS) Polished Stainless (PS)	9 GPM
		36"	FTDG 2536		
		42"	FTDG 2542		
		48"	FTDG 2548		
		60"	FTDG 2560		
 2½" W x 1" D	FTDG 65 Grate: 16 gauge, 304 stainless steel	32"	FTDG 6532	Satin Stainless (SS) Polished Stainless (PS)	9 GPM
		36"	FTDG 6536		
		42"	FTDG 6542		
		48"	FTDG 6548		
		60"	FTDG 6560		
 1" W x 1" D	FTMN 25 Grate: 14 gauge, 304 stainless steel	32"	FTMN 2532	Satin Stainless (SS) Polished Stainless (PS) Lifetime Oil Rubbed Bronze (ORB) Matte White (WH) Matte Black (BK)	9 GPM
		36"	FTMN 2536		
		42"	FTMN 2542		
		48"	FTMN 2548		
		60"	FTMN 2560		
 2½" W x 1" D	FTMN 65 Grate: 14 gauge, 304 stainless steel	32"	FTMN 6532	Satin Stainless (SS) Polished Stainless (PS) Lifetime Oil Rubbed Bronze (ORB) Matte White (WH) Matte Black (BK)	9 GPM
		36"	FTMN 6536		
		42"	FTMN 6542		
		48"	FTMN 6548		
		60"	FTMN 6560		
 1" W x 1" D	FTAS 25 Grate: 12 gauge, 316 stainless steel	32"	FTAS 2532	Satin Stainless (SS) Polished Stainless (PS) Matte White (WH) Matte Black (BK)	9 GPM
		36"	FTAS 2536		
		42"	FTAS 2542		
		48"	FTAS 2548		
		60"	FTAS 2560		
 2½" W x 1" D	FTAS 65 Grate: 12 gauge, 316 stainless steel	24"	FTAS 6524	Satin Stainless (SS) Polished Stainless (PS) Matte White (WH) Matte Black (BK)	9 GPM
		32"	FTAS 6532		
		36"	FTAS 6536		
		42"	FTAS 6542		
		48"	FTAS 6548		
		60"	FTAS 6560		
 2½" W x 1½" D	FTTIF 65 Grate: 16 gauge, 304 stainless steel	24"	FTTIF 6524	Satin Stainless (SS) Polished Stainless (PS)	9 GPM
		32"	FTTIF 6532		
		36"	FTTIF 6536		
		42"	FTTIF 6542		
		48"	FTTIF 6548		
		60"	FTTIF 6560		

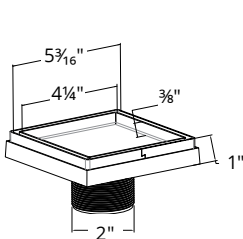
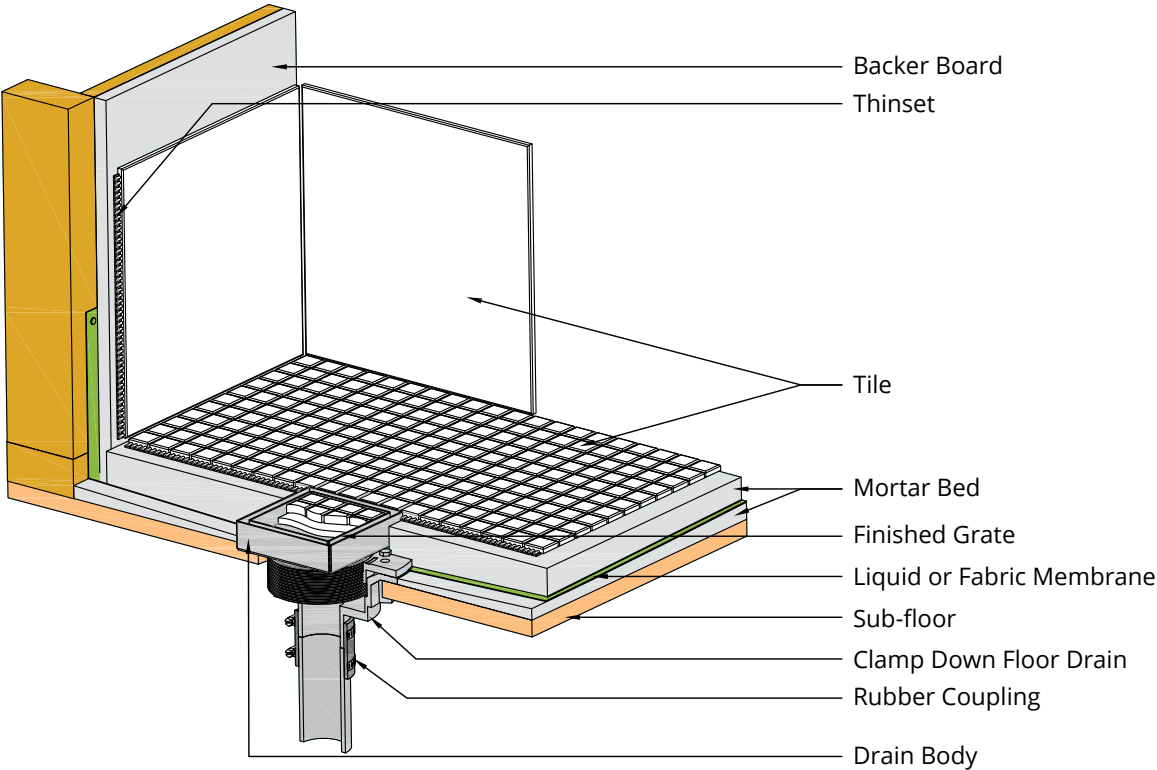
Center Drain (TD) Standard

Installation

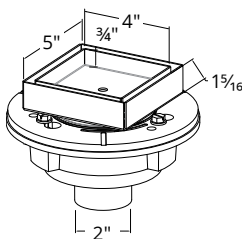
A traditional center drain where the floor is pitched in four directions toward the drain.

Waterproofing:

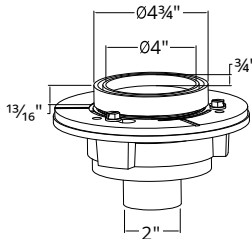
- Copper Pan
- Lead Pan
- Fiberglass
- PVC Vinyl Liner
- Hot Mop
- Rubber Liner



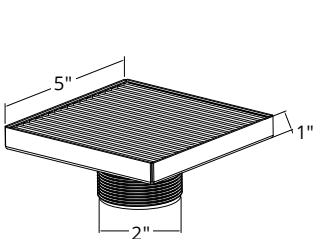
LT5-2



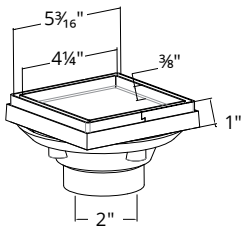
TD 15



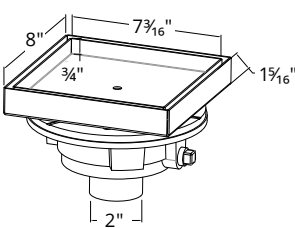
RTD 15



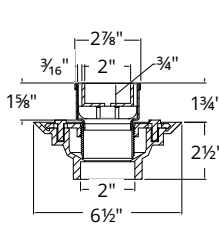
W5



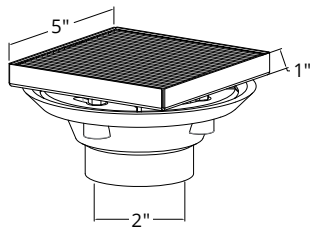
LTD 5



TD 20



TD 50



WW 5

Center Drain (TD) Standard

	Series	Size	SKU	Finish Options	GPM
<div>Tile Insert Frame</div> <div></div> <div>5" L x 5" W</div>	LT5-2 Strainer only ABS & Stainless Steel Body 2" Throat	5" x 5"	LT5-2	Satin Stainless (SS) Polished Stainless (PS)	8 GPM
	LTD 5 Complete kit with Drain Body ABS & Stainless Steel Body 2" Throat 2" Outlet	5" x 5" Cast Iron	LTD5-2I	Satin Stainless (SS) Polished Stainless (PS)	8 GPM
		5" x 5" ABS	LTD5-2A		
		5" x 5" PVC	LTD5-2P		
<div>Tile Insert Frame</div> <div></div> <div>5" L x 5" W</div>	TD 15 Complete kit with Drain Body Stainless Steel Body 4" Throat 2" or 3" Outlet	5" x 5" Cast Iron	TD 15-2I TD 15-3I	Satin Stainless (SS) Polished Stainless (PS)	2" Outlet: 9 GPM 3" Outlet: 21 GPM
		5" x 5" ABS	TD 15-2A TD 15-3A		
		5" x 5" PVC	TD 15-2P TD 15-3P		
<div>Tile Insert Frame</div> <div></div> <div>8" L x 8" W</div>	TD 20 Complete kit with Drain Body Stainless Steel Body 4" Throat 2" or 3" Outlet	8" x 8" Cast Iron	TD 20-2I TD 20-3I	Satin Stainless (SS) Polished Stainless (PS)	2" Outlet: 9 GPM 3" Outlet: 21 GPM
		8" x 8" ABS	TD 20-2A TD 20-3A		
		8" x 8" PVC	TD 20-2P TD 20-3P		
<div>Tile Insert Frame</div> <div></div> <div>20" L x 3" W</div>	TD 50 Complete kit with Drain Body Stainless Steel Body 2" Throat 2" Outlet	20" x 3" Cast Iron	TD 50-2I	Satin Stainless (SS) Polished Stainless (PS)	9 GPM
		20" x 3" ABS	TD 50-2A		
		20" x 3" PVC	TD 50-2P		
<div>Tile Insert Frame</div> <div></div> <div>5" ROUND</div>	RTD 15 Complete kit with Drain Body Stainless Steel Body 4" Throat 2" or 3" Outlet	5" Cast Iron	RTD 15-2I RTD 15-3I	Polished Stainless (PS)	2" Outlet: 9 GPM 3" Outlet: 21 GPM
		5" ABS	RTD 15-2A RTD 15-3A		
		5" PVC	RTD 15-2P RTD 15-3P		
<div>3mm Wedge Wire</div> <div></div> <div>5" L x 5" W</div>	W5 Strainer only Stainless steel body 2" Throat	5" x 5"	W5	Satin Stainless (SS) Polished Stainless (PS)	9 GPM
	WW 5 Complete kit with Drain Body Stainless Steel Body 2" Throat 2" Outlet	5" x 5" Cast Iron	WW5-2I	Satin Stainless (SS) Polished Stainless (PS)	9 GPM
		5" x 5" ABS	WW5-2A		
		5" x 5" PVC	WW5-2P		

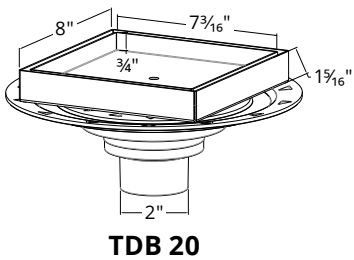
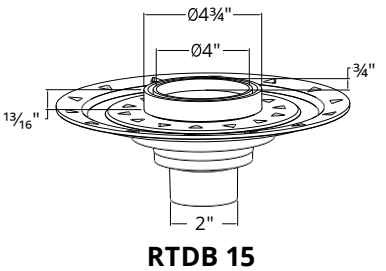
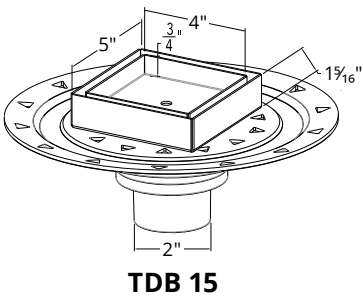
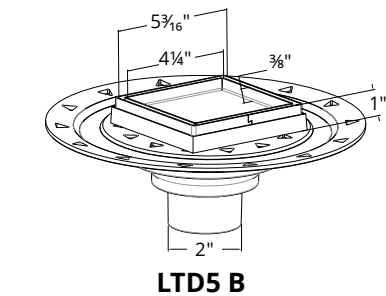
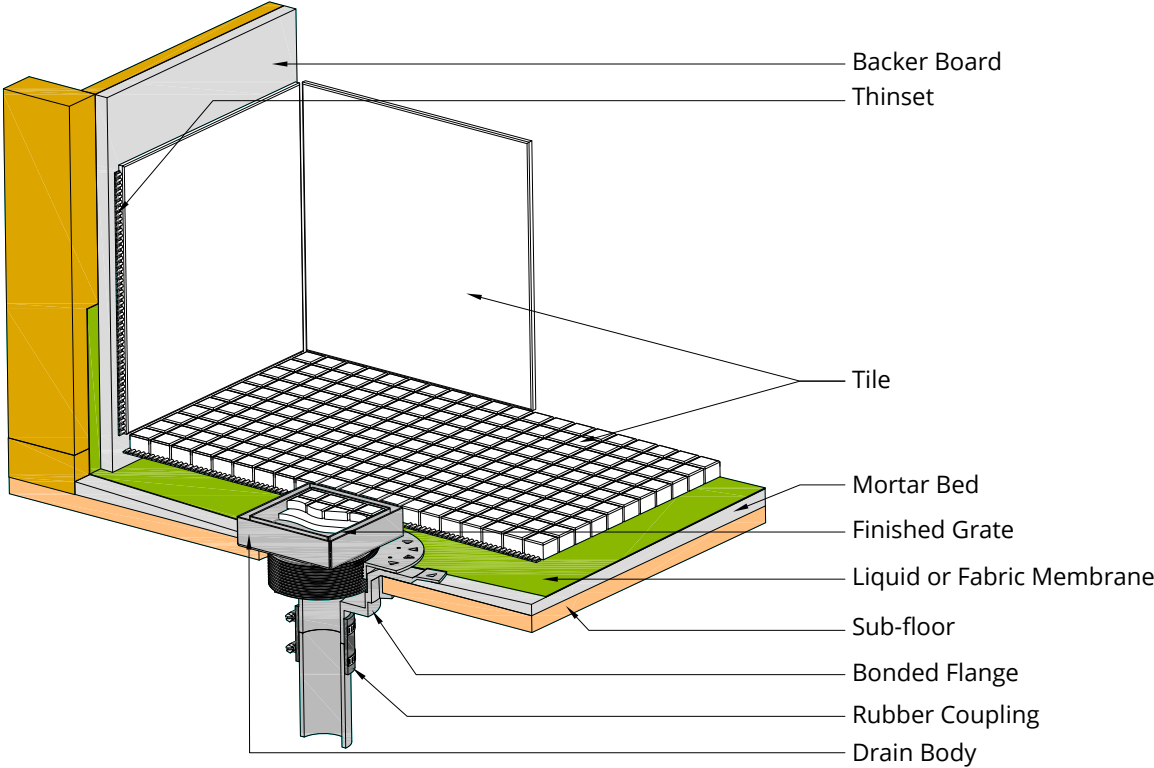
Center Drain (TDB) Bonded Flange

Installation

A Bonded Flange center drain where the floor is pitched in four directions toward the drain.

Waterproofing:

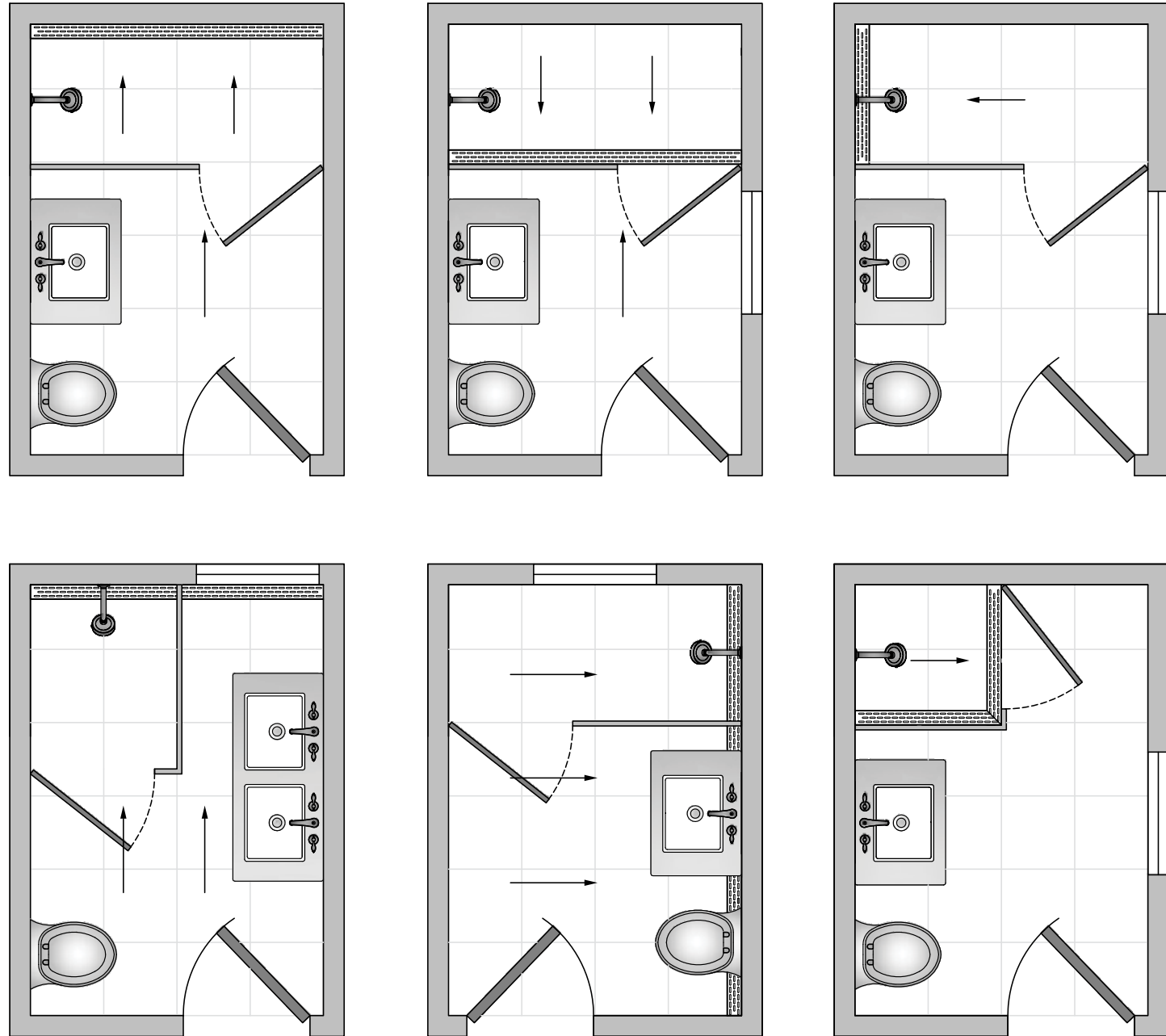
- Liquid Membrane
- Fabric Sheet Membrane



Center Drain (TDB) Bonded Flange

	Series	Size	SKU	Finish Options	GPM
Tile Insert Frame  5" L x 5" W	LTD5 B Complete kit with Bonded Flange ABS & Stainless Steel Body 2" Throat 2", 3", 4" Outlet	5" x 5" ABS	LTD5 BA	Satin Stainless (SS) Polished Stainless (PS)	8 GPM
		5" x 5" PVC	LTD5 BP		
Tile Insert Frame  5" L x 5" W	TDB 15 Complete kit with Bonded Flange Stainless Steel Body 4" Throat 2" or 3" Outlet	5" x 5" ABS	TDB 15-A	Satin Stainless (SS) Polished Stainless (PS)	9 GPM
		5" x 5" PVC	TDB 15-P		
Tile Insert Frame  8" L x 8" W	TDB 20 Complete kit with Bonded Flange Stainless Steel Body 4" Throat 2" or 3" Outlet	8" x 8" ABS	TDB 20-A	Satin Stainless (SS) Polished Stainless (PS)	9 GPM
		8" x 8" PVC	TDB 20-P		
Tile Insert Frame  5" ROUND	RTDB 15 Complete kit with Bonded Flange Stainless Steel Body 4" Throat 2", 3", 4" Outlet	5" ABS	RTDB 15-A	Polished Stainless (PS)	9 GPM
		5" PVC	RTDB 15-P		

The particulars of any drain installation depend on a number of variables: Site conditions, waterproofing, and type of install. Whether it is a barrier threshold (curb), or barrier free (curbless/zero-threshold) installation, Infinity Drain has provided general guidelines to assist in determining the correct product for your project. Always consult a licensed professional. Contact Infinity Drain with questions regarding your specific installation.



Locating Linear Drains:

Linear drain systems eliminate the use of a traditional center drain installation, allowing for the floor surface to be pitched in one direction, and resulting in no limitation on tile size or slab material. This offers an advantage from the traditional center drain installation, where the floor must slope in four directions in order to properly drain the water.

Site Conditions:

Whether it is a renovation or new construction, choosing where to locate a linear drain is contingent on the waste line location, which may be predetermined or already installed. Moving a waste line may be possible, depending on site conditions. Infinity Drain's Site Sizeable (S) Series provides flexibility during the installation process by allowing the outlet to be placed anywhere along the channel run.

Wall-to-Wall (Fig 1 and 2)

One way to ensure proper drainage is to install the linear drain from wall-to-wall. The challenge of this installation is that it requires an exact dimension. Infinity Drain offers a solution to this issue with the Site Sizeable (S) Series, which allows for "site sizing" the length of the drain by cutting the grate and channel to the exact finished wall-to-wall dimension. Infinity Drain's FX, FF, & FT Series can be custom fabricated for the exact desired length and outlet location.

Against the Wall (length of drain) (Fig 3)

Infinity Drain's Fixed Flange FF Series (bottom outlet) and FT Series (side outlet) are designed for against the wall installations. These series are intended for use with liquid or fabric sheet waterproofing to tie into the wallboard. They are available with a center outlet location in set lengths of 24", 32", 36", 42", 48", and 60." Custom fabrication is available (p. 34).

The Site Sizeable (S) and Fixed Length (FX) Series require a traditional clamp down floor drain for PVC Vinyl Liner, Chloraloy®, Lead Pan, Copper Pan, Fiberglass and Hot Mop waterproofing. The diameter of the clamp down drain body creates a challenge for against the wall installations. If using these series, Infinity Drain recommends three options to help properly achieve an against the wall installation.

1. Use the FF or FT series for exact against the wall installation.
2. Build out the back wall with a double layer of wall board.
3. Install a strip of flooring material between the drain and wall.

Curb or Curbless Threshold (Fig 3, 4, and 5)

Deciding between a barrier threshold (curb) or barrier free (curbless) installation is critical when a linear drain is being considered.

Threshold Installation (Fig 4 and 5)

For threshold installs, we recommend the drain run exactly wall-to-wall to block any water from leaving the shower or wet area. We do not recommend linear drains thinner than 2-1/2" wide or tile-in type drains for zero-threshold installations due to the lack of channel width needed to sufficiently catch the water.

Barrier Free Installation (Fig 4 and 5)

Installing a shower drain without a curb, barrier, or threshold creates a seamless look with easy accessibility to the wet area. To achieve an ideal installation, floor heights should be equal between the shower area (wet area), outside the shower (dry area), and next room. Site specific conditions will determine whether a zero-threshold shower can be achieved. The FF and FT Series offer the lowest overall height (1 1/16" and 1 3/16"). In addition, we offer a support bracket (ST 65) which allows the channel to recess into subfloor an additional 3/4". The dry side of the shower should have a slight pitch towards the linear system to ensure proper drainage. The entire wet and dry floor area should be waterproofed. Infinity Drain recommends a minimum of 42" shower enclosure width to contain water from splashing outside the wet area.

Center Pitch Installation (Fig 6)

A center pitch installation places the drain in the middle of the wet area. The floor is pitched in four directions towards the drain. The type of waterproofing used is either the traditional method with clamp down floor drain (TD Series) or a liquid membrane/fabric sheet with a Bonded Flange drain body (TDB Series).



Fig 1: S-AS 65 finished wall-to-wall with build out.



Fig 2: S-AG 38 installed NOT wall-to-wall. If the drain does not finish wall-to-wall the remaining area must have flooring material on either side and pitch back to the drain.



Fig 3: Against the wall installation with the FFAS 65 series.



Fig 4: Threshold installation using the S-AS 65 demonstrates an exact wall-to-wall barrier free installation.



Fig 5: Threshold Installation FFED 65 where the entire bathroom is waterproofed. The dry side is slightly pitched towards the linear drain.



Fig 6: Tile Drain Series: Center Pitch Installation

Flow Rates:

There are many variables that influence flow rates and how drains perform. Our listed GPM (gallons per minute) on Infinity Drain products are based on having a "head of water" that is traveling at ½" high. Different head heights will change flow rate. Without calculating a specific install, use our flow rate as a **general** guideline. The following variables should be considered when choosing and locating a linear drain.

Variables to consider:

What is flow rate of the shower valve? (i.e. how much water is being drained?)

Are there multiple shower valves?

What is the water pressure or PSI of the site location?

How many water features? (i.e. showerheads, hand shower, body sprays, etc.?)

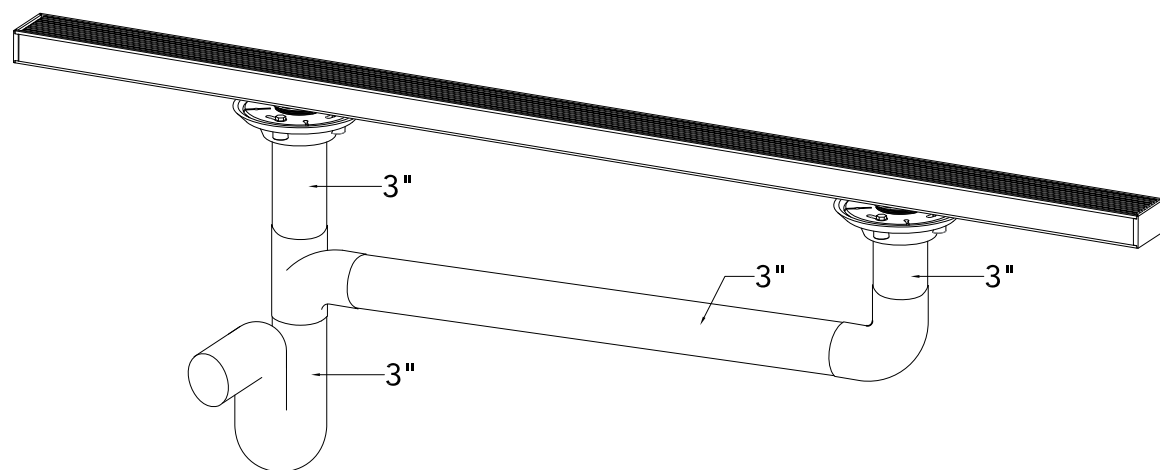
Will the fixtures operate at the local plumbing code's legal gallons per minute?

Will the flow restrictors be removed from the fixtures?

The answers to the above questions fall into the equation of determining the proper type of drain, outlets necessary, and location of the drain. These variables can vary drastically from installation to installation, and because of this, it is difficult to have an absolute flow rate. Most US residential installations use a 2" waste line, which has an average capacity of 9 GPM at ½" head of water, assuming proper venting. Adding additional 2" outlets and tying them to a 3" waste line will significantly increase the flow rate to 21 GPM. Infinity Drain's 3" outlet products have an average capacity of 21 GPM.

Outlets:

Infinity Drain products are intended for both indoor and outdoor use. For indoor installations, we recommend an outlet every 30". For example, on a 60" length drain, if the outlet is centered, it is considered to have 30" on either side. In the same example, if the outlet is offset 5" to one side, we would recommend a secondary outlet, especially for a zero-threshold installation. Our 72", 80", and 96" complete kits come standard with two outlet assemblies. Site Sizeable (S) Series can add additional outlet components to the kit. Custom fabrication with multiple outlets is available on the FX, FF, and FT linear drain series. Outdoor installations: Outlet frequency is dependent on drain application and geographic location. Please contact us with questions regarding your specific installation.



Adding a second outlet to a 3" waste line increases flow rate to 21 gpm.

Waterproofing:

Waterproofing technique can help determine which linear drain series to specify. If using a traditional type of waterproofing, the professional will typically build a shower pan (wet waterproofed area) with PVC, Vinyl, Lead, Hot Mop, Copper or Fiberglass material. Infinity Drain's S, FX, and TD Series are recommended. If using a modern type of waterproofing such as liquid membrane or fabric sheet, the professional can more easily waterproof over a greater floor area to build a barrier free or zero threshold installation. Infinity Drain's FF, FT, and TDB Series are recommended for this type of waterproofing.

Using a clamp down floor drain/tile floor drain:



PVC Membrane/Vinyl Liner (Polyvinyl Chloride): A plastic sheet available at most plumbing suppliers and sold in rolls of 4', 5' and 6'. The membrane is layered between mortar beds and the corners are folded to create the shower pan liner. If the shower pan area is larger than the roll dimension, it must be seamed or joined together.



Lead Pan/Copper Pan: A metal sheet that is formed to create the shower pan area. The membrane is layered between mortar beds and the corners are folded to create the shower pan liner. If the shower pan area is larger than the sheet dimension, the lead material must be welded together. This install is more common in metropolitan areas where code may require a metal pan.



CPE Membrane (Chlorinated Polyethylene): A rubber sheet available at most plumbing suppliers and sold in rolls of 4', 5' and 6'. The membrane is layered between mortar beds and corners are folded to create the shower pan liner. If the shower pan area is larger than the roll dimension, it must be seamed or joined together. CPE Membrane is also branded as Chloraloy® by Noble.

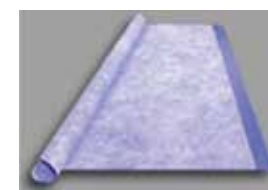


Hot Mop (Tar): Heated liquid tar is applied or "mopped" on the shower area to create the shower pan and is similar to waterproofing a roof with tar. This installation is most common in California. Similar to fiberglass waterproofing.

Using a bonded flange:



Liquid: Roll or paint-on liquid membrane that can be applied on floors, walls, and ceilings and bonds directly to the drain flange. The total install time is shorter than traditional waterproofing methods and typically saves 2 to 3 days. Infinity Drain recommends and offers Hydro Ban™ waterproofing by Laticrete®. Hydro Ban™ is a self-curing product that is ready for flood testing in 2 to 5 hours. Tile can bond directly to waterproofing.



Fabric Sheet: Sheet membrane that bonds directly to the drain flange with an adhesive and is sold by most tile suppliers. Corners (in and out) are available to avoid folding. If the shower pan area is larger than the roll dimensions, it must be seamed or joined together. Tile can bond directly to waterproofing.



Infinity Drain's versatile linear drain systems work for shower stalls, pool surrounds, patios, balconies, driveways, and storm drainage. We offer threaded and non-threaded outlets, 90° angle joiners, straight joiners, and custom fabrication. Please contact us for assistance.

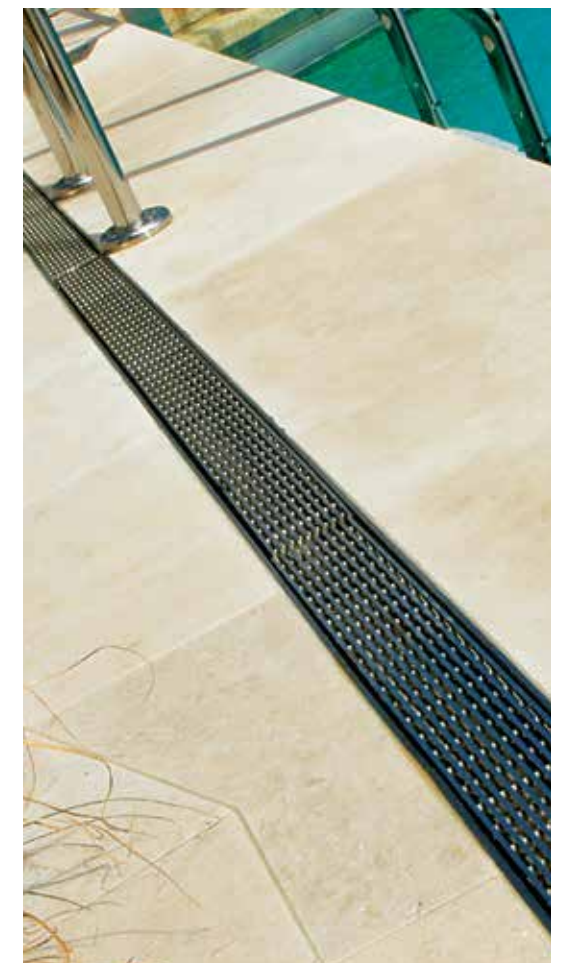
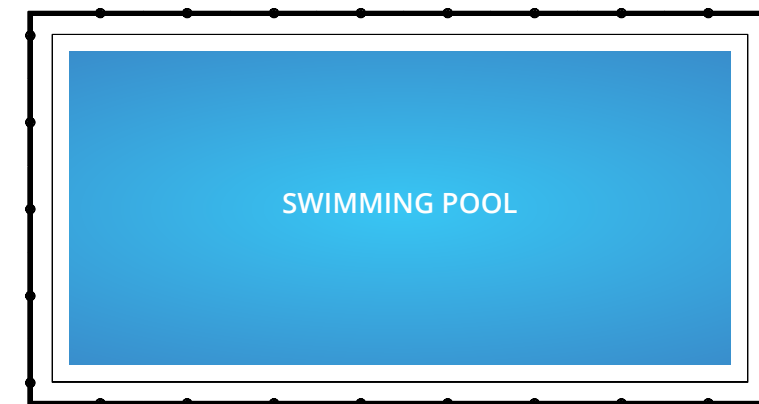
Example:

Straight 30' (360") linear drain run using the S-AS 65 Series



Example:

20'x40' (1440") rectangular pool drain run issuing the S-AG 38 Series





Infinity Drain offers a variety of customized drainage products to your exact specification. Please contact Infinity Drain for a custom fabrication quote and lead time.

Customization Options

- Installation types: Fixed (FX), Fixed Flange (FF), and Side Outlet (FT)
- Length of linear drain systems up to 300"
- Outlet placement
- Multiple outlets
- Shapes and configurations (please send drawing for quotation)
- Angle joiners for stainless steel Site Sizeable (S) channels

Custom Fabrication Information

- Linear grates will be made 1/8" shorter than specified custom length to allow for removal
- FX Series custom length is based on the entire grate and channel assembly
- FF and FT Series custom length is based on inside channel dimension
- 1/8" tolerance on custom fabricated products
- Completed custom sheet must accompany purchase order from an authorized dealer
- Rush service available

Visit www.InfinityDrain.com for more information.

Finishes



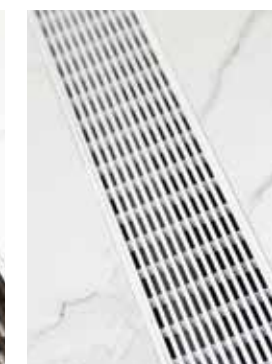
Satin Stainless Steel



Polished Stainless Steel



Lifetime Oil Rubbed Bronze



Matte White



Matte Black

Accessories



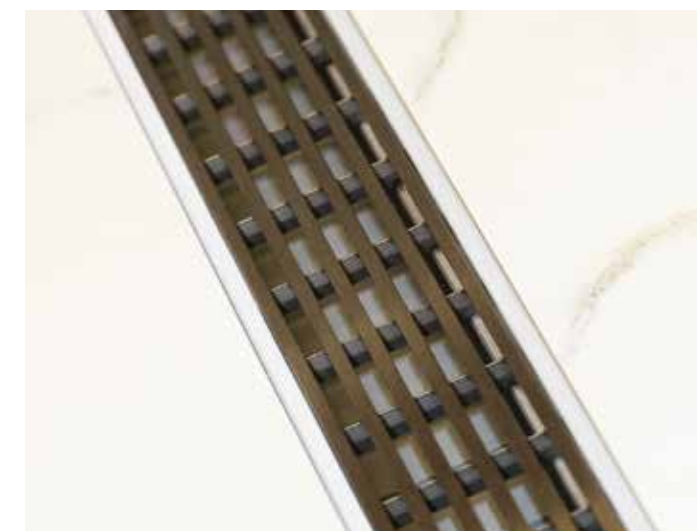
Strainers included with all models except 99 Series, FT Series, RTD Series, and RTDB Series.



Infinity Drain offers 90 degree channel joiners and custom configurations.

Grout Treatment

To conceal the exposed PVC edge on S-AG, S-DG, and S-TIF Series, apply a bead of epoxy based silicone of similar grout color to top edge of channel. Or, mix unsanded grout with PVC glue (50/50 mix) and brush along edge.



Made in the U.S.A.



Infinity Drain • 18 Secatoag Avenue, Port Washington, New York 11050
Phone 516.767.6786 • Fax 516.740.3066 • orders@infinitydrain.com
www.InfinityDrain.com