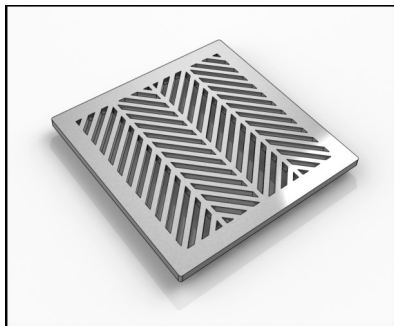
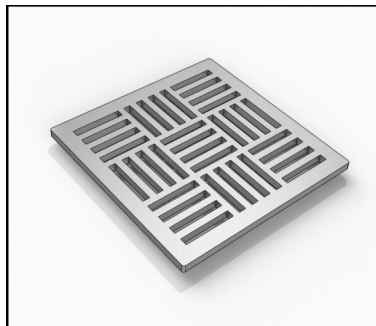


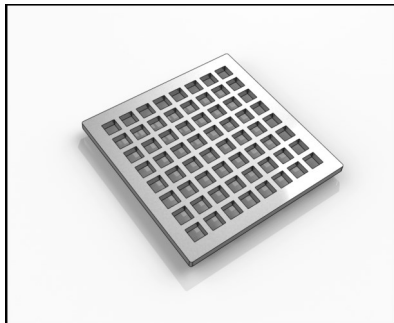
- 3/16" Thick Stainless Steel strainer
- 2" Residential Throat or 4" High Flow Throat
- Indoor or outdoor use
- Drain body (Cast Iron, PVC or ABS) with 2" or 4" throat
- Uses Hot Mop, Lead Pan, PVC Vinyl Liner, Rubber Liner (Chloralloy™) Copper Pan or Fiberglass waterproofing
- Magnetically fastening strainer
- Requires traditional 4-way floor pitch
- Integral hair catch



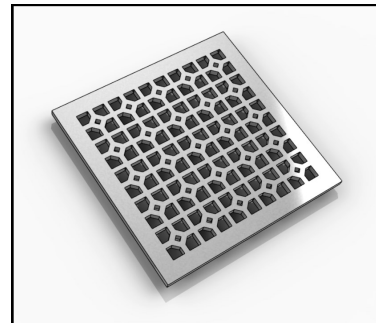
Herring Strainer



Lines Strainer



Square Strainer



Otto Strainer

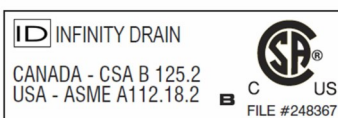
Finishes:

- Satin Stainless
- Polished Stainless
- Lifetime Oil Rubbed Bronze

Note: Installer must verify all rough-in dimensions prior to installation and consult local and national codes. Conformity and compliance to local and national codes are the responsibility of the installer.

Infinity Drain

18 Secatoag Avenue
Port Washington, NY 11050
Phone: 516.767.6786
Fax: 516.740.3066
www.InfinityDrain.com



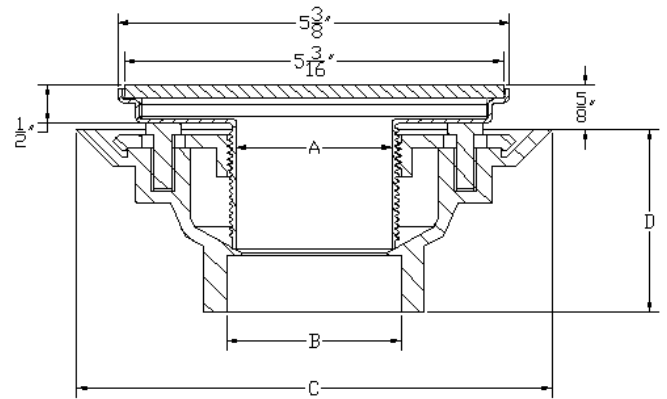
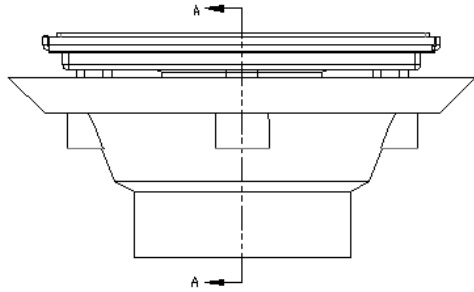
Components: (Each Sold Separately)

G 1	Herring Strainer
G 2	Line Strainer
G 3	Square Strainer
G 4	Otto Strainer
T 2	Residential Stainless 2" Throat
T 4	High Flow Stainless 4" Throat
HS 2	2" Residential Hair Catch
HS 4	4" High Flow Hair Catch
CDI 22	2" Clamp Down Drain Cast Iron with 2" No Hub Outlet
CDIT 22	2" Clamp Down Drain Cast Iron with 2" Threaded outlet
CDA 22	2" Clamp Down Drain ABS with 2" Outlet
CDP 22	2" Clamp Down Drain PVC with 2" Outlet
CDI 42	4" Clamp Down Drain Cast Iron with 2" No Hub Outlet
CDIT 42	4" Clamp Down Drain Cast Iron with 2" Threaded outlet
CDA 42	4" Clamp Down Drain ABS with 2" Outlet
CDP 42	4" Clamp Down Drain PVC with 2" Outlet
CDI 43	4" Clamp Down Drain Cast Iron with 3" No Hub Outlet
CDIT 43	4" Clamp Down Drain Cast Iron with 3" Threaded outlet
CDA 43	4" Clamp Down Drain ABS with 3" Outlet
CDP 43	Clamp Down Drain PVC with 3" Outlet

Drain Assemblies: (Includes)

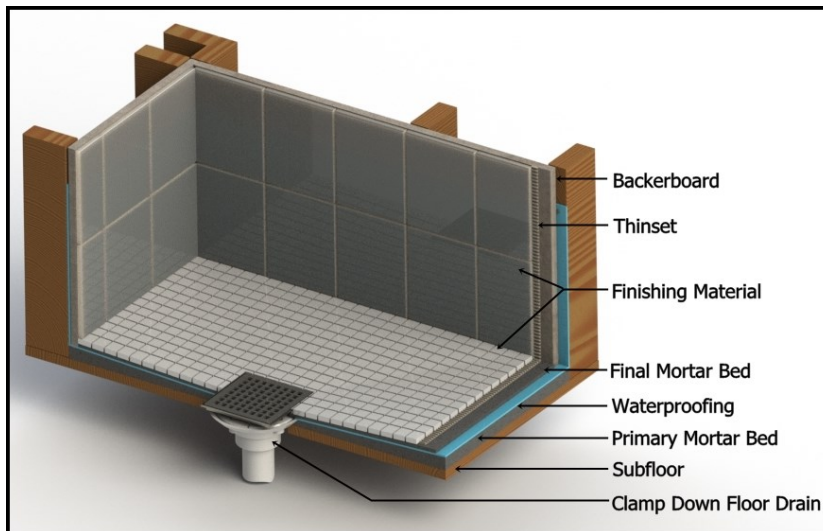
DI 22 :	CDI 22 T 2 HS 2
DT 22 :	CDIT 22 T 2 HS 2
DA22 :	CDA 22 T 2 HS 2
DP 22 :	CDP 22 T 2 HS 2
DI 42 :	CDI 42 T 4 HS 4
DT 42 :	CDIT 42 T 4 HS 4
DA42 :	CDA 42 T 4 HS 4
DP 42 :	CDP 42 T 4 HS 4
DI 43 :	CDI 43 T 4 HS 4
DT 43 :	CDIT 43 T 4 HS 4
DA43 :	CDA 43 T 4 HS 4
DP 43 :	CDP 43 T 4 HS 4

G Series Specifications



SECTION A-A

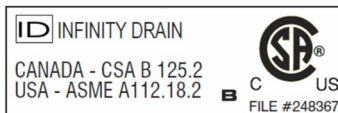
Installation G Series



Model #	A	B	C	D	Flow Rate
DI 22	2"	2"	6 ½"	2 ½"	9 GPM
DT 22	2"	2"	6 ½"	2 ½"	9 GPM
DA 22	2"	2"	6 ½"	2 ½"	9 GPM
DP 22	2"	2"	6 ½"	2 ½"	9 GPM
DI 42	4"	2"	8"	4"	21 GPM
DT 42	4"	2"	8"	4"	21 GPM
DA 42	4"	2"	8"	4"	21 GPM
DP 42	4"	2"	8"	4"	21 GPM
DI 43	4"	3"	8"	4"	30 GPM
DT 43	4"	3"	8"	4"	30 GPM
DA 43	4"	3"	8"	4"	30 GPM
DP 43	4"	3"	8"	4"	30 GPM

Infinity Drain

18 Secatoag Avenue
Port Washington, NY 11050
Phone: 516.767.6786
Fax: 516.740.3066
www.InfinityDrain.com



Note: Installer must verify all rough-in dimensions prior to installation and consult local and national codes. Conformity and compliance to local and national codes are the responsibility of the installer.