

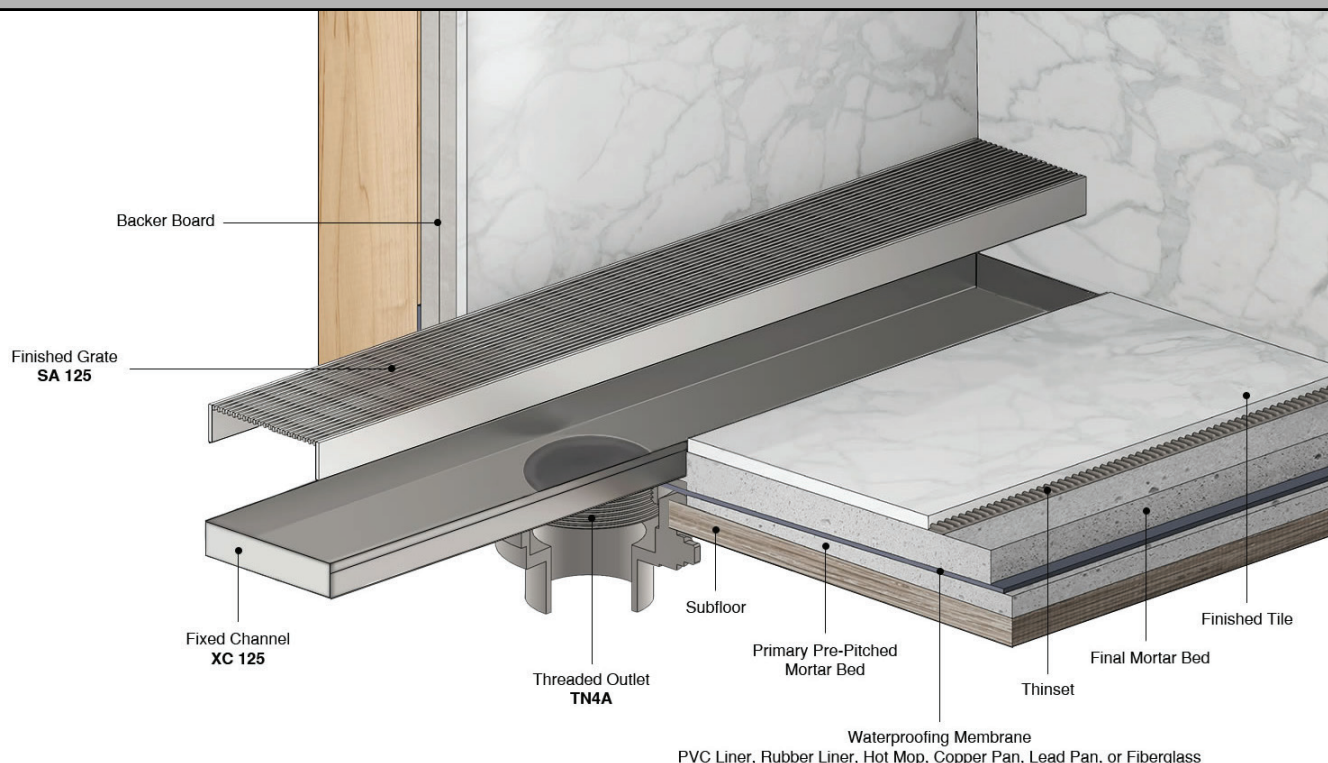
## FXAS 125 Series FIXED LENGTH

- FXAS 12532 - 32" Complete Kit
- FXAS 12536 - 36" Complete Kit
- FXAS 12542 - 42" Complete Kit
- FXAS 12548 - 48" Complete Kit
- FXAS 12560 - 60" Complete Kit

### Features

- Pre-pitched channel with fixed lengths and fixed center outlet
- Indoor or outdoor use
- 16 gauge, 304L stainless steel channel
- 12 gauge, 316L stainless steel Wedge Wire grate
- Works with 3" clamp down floor drain with 4" throat/strainer size  
*(Included in complete kit - Available in ABS, PV)*
- Compatible with: PVC Liner, Rubber Liner (Chloraloy ®), Hot Mop, Lead Pan, Copper Pan, or Fiberglass
- Grate can be removed completely for cleaning
- Flow rate - 21 gpm per outlet
  - Flow rate measured at outlet only. Measurement does not account for water in channel or sheeting on shower floor.

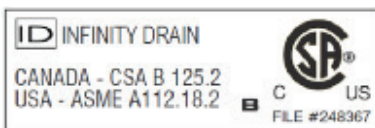
### Installation



### Care & Maintenance

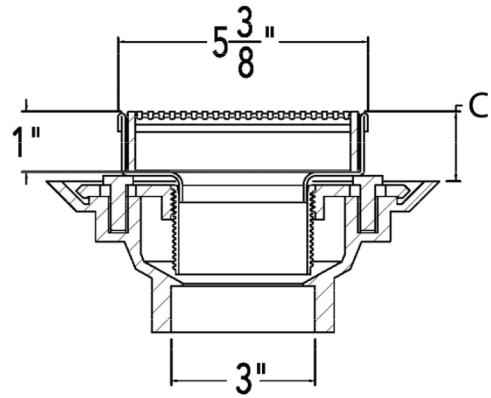
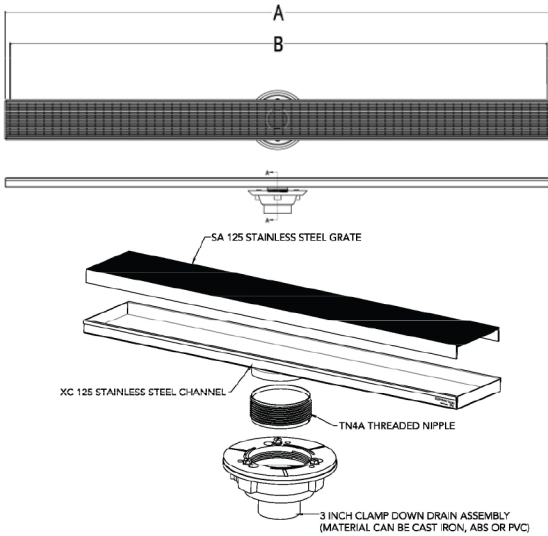
FXAS 125 stainless steel linear drain top grates are made of 316L stainless steel. This material is non-porous, hygienic, rust-free and extremely durable. Bar Keepers Friend® and Soft Scrub® are commonly available products that can be used to protect and clean your Satin Stainless drain cover. For stains that have been left for an excessive amount of time, stronger cleaning agents such as Steel Brite® may be needed. For Polished Stainless and other finishes we recommend a mild soap and a soft cloth for cleaning. DO NOT use any abrasive cleaners, scrub pads or allow household cleaning agents, such as bleach, to sit on the drain cover for a long period of time. Stainless steel does not rust. External factors, such as contamination from other highly ferrous metals, built up road salt, sea salt, or chlorine may have caused "surface" rust which can be removed using Barkeepers Friend®, Soft Scrub® with Bleach, or Steel Brite®. Always follow the directions on the bottle. Follow proper maintenance procedures to prevent excessive surface rust. In areas of frequent exposure to salt, chlorine, and other chemical compounds, maintenance of the stainless grates should be performed at least 2-3 times per year.

**Infinity Drain**  
145 Dixon Avenue  
Amityville, NY 11701  
Phone: 516.767.6786  
Fax: 516.740.3066  
www.Infinity Drain.com



NOTE: Installer must verify all rough-in dimensions prior to installation and consult local and national codes. Conformity and compliance to local and national codes are the responsibility of the installer.

# ID Infinity Drain



**SECTION A-A**

Model Number	Complete Kit Contents	A (Maximum Overall Length)	B (Maximum Grate Length)	C (Minimum Height Above Waterproofing) * All heights can be adjusted upwards an additional 1-1/4"
<input type="checkbox"/> FXAS 12532	1 - SA 12532 Stainless Steel Grate 1 - XC 12532 Fixed Channel 1 - TN4A Threaded Nipple 1 - CDI 43/ CDP 43/ CDA 43 Drain Body* 1 - HS 4 4" Hair Strainer 1 - AKEY Lift Out Key	32 1/8"	31 7/8"	With CDI 43: 1-7/16" With CDA 43: 1-7/16" With CDP 43: 1-7/16"
<input type="checkbox"/> FXAS 12536	1 - SA 12536 Stainless Steel Grate 1 - XC 12536 Fixed Channel 1 - TN4A Threaded Nipple 1 - CDI 43/ CDP 43/ CDA 43 Drain Body* 1 - HS 4 4" Hair Strainer 1 - AKEY Lift Out Key	36 1/8"	35 7/8"	With CDI 43: 1-7/16" With CDA 43: 1-7/16" With CDP 43: 1-7/16"
<input type="checkbox"/> FXAS 12542	1 - SA 12542 Stainless Steel Grate 1 - XC 12542 Fixed Channel 1 - TN4A Threaded Nipple 1 - CDI 43/ CDP 43/ CDA 43 Drain Body* 1 - HS 4 4" Hair Strainer 1 - AKEY Lift Out Key	42 1/8"	41 7/8"	With CDI 43: 1-7/16" With CDA 43: 1-7/16" With CDP 43: 1-7/16"
<input type="checkbox"/> FXAS 12548	1 - SA 12548 Stainless Steel Grate 1 - XC 12548 Fixed Channel 1 - TN4A Threaded Nipple 1 - CDI 43/ CDP 43/ CDA 43 Drain Body* 1 - HS 4 4" Hair Strainer 1 - AKEY Lift Out Key	48 1/8"	47 7/8"	With CDI 43: 1-7/16" With CDA 43: 1-7/16" With CDP 43: 1-7/16"
<input type="checkbox"/> FXAS 12560	1 - SA 12560 Stainless Steel Grate 1 - XC 12560 Fixed Channel 1 - TN4A Threaded Nipple 1 - CDI 43/ CDP 43/ CDA 43 Drain Body* 1 - HS 4 4" Hair Strainer 1 - AKEY Lift Out Key	60 1/8"	59 7/8"	With CDI 43: 1-7/16" With CDA 43: 1-7/16" With CDP 43: 1-7/16"

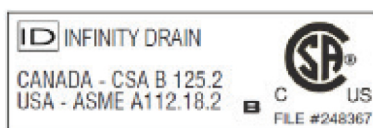
## Finishes

☐ Satin Stainless with Cast Iron Drain Body (I SS)

☐ Polished Stainless with Cast Iron Drain Body (I PS)

**Add the following suffixes for specific drain body: -I for cast Iron, -A for ABS, -P for PVC. Cast Iron is standard.**

**Infinity Drain**  
145 Dixon Avenue  
Amityville, NY 11701  
Phone: 516.767.6786  
Fax: 516.740.3066  
www.Infinity Drain.com



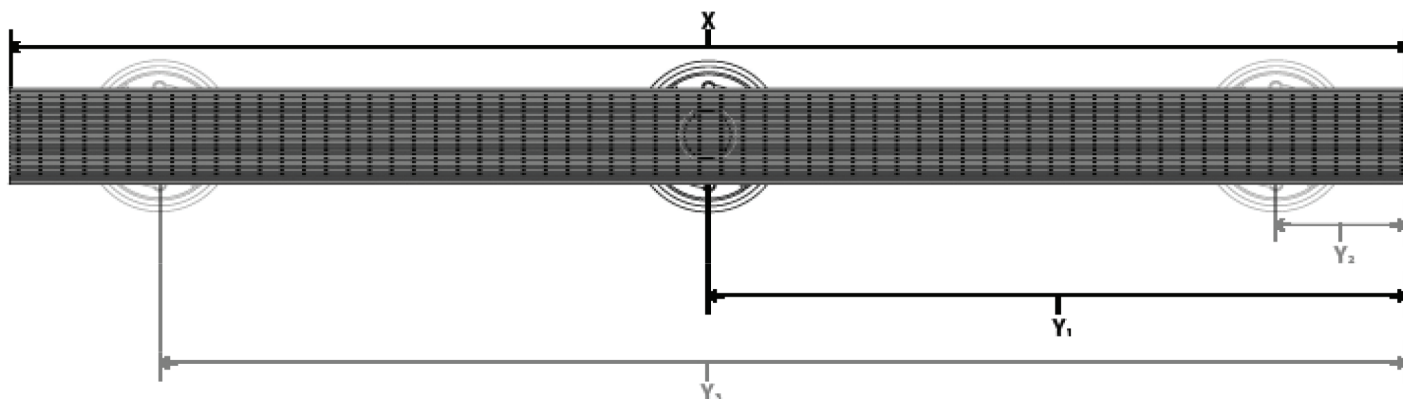
NOTE: Installer must verify all rough-in dimensions prior to installation and consult local and national codes. Conformity and compliance to local and national codes are the responsibility of the installer.

# ID Infinity Drain

## OPTIONAL COMPONENTS

TNRN - 4	4" Long Stainless Steel Extension Nipple
UCP 4	Universal 4" Clamping Plate
CDI 42	Clamp Down Drain, <b>Cast Iron</b> , 4" Throat, 2" No Hub Outlet
CDI 43	Clamp Down Drain, <b>Cast Iron</b> , 4" Throat, 3" No Hub Outlet
CDA 42	Clamp Down Drain, <b>ABS</b> , 4" Throat, 2" No Hub Outlet
CDA 43	Clamp Down Drain, <b>ABS</b> , 4" Throat, 3" No Hub Outlet
CDP 42	Clamp Down Drain, <b>PVC</b> , 4" Throat, 2" No Hub Outlet
CDP 43	Clamp Down Drain, <b>PVC</b> , 4" Throat, 3" No Hub Outlet
CDIT 42	Clamp Down Drain, <b>Cast Iron</b> , 4" Throat, 2" Threaded Outlet
CDIT 43	Clamp Down Drain, <b>Cast Iron</b> , 4" Throat, 3" Threaded Outlet
CDIC 42	Clamp Down Drain, <b>Cast Iron</b> , 4" Throat, 2" Inside Caulk Outlet
CDIC 43	Clamp Down Drain, <b>Cast Iron</b> , 4" Throat, 3" Inside Caulk Outlet
CDIS 42	Clamp Down Drain, <b>Cast Iron</b> , Integral Trap 2" Throat, 2" Threaded Side Outlet
CDIQ 42	Clamp Down Drain, <b>Cast Iron</b> , Side Outlet No Trap 4" Throat, 2" Outlet

## ☐ FXAS 125 CUSTOM



☐ Satin Stainless    ☐ Polished Stainless    ☐ Oil Rubbed Bronze    ☐ Matte White    ☐ Matte Black    ☐ Satin Bronze

**X: LENGTH:** Overall Channel Dimension (inches): \_\_\_\_\_

Desired finished dimension

For lengths greater than 60", multiple grates are supplied, unless otherwise noted.

**Y: OUTLET LOCATION:** \_\_\_\_\_ # of outlets | Center of Outlet(s) to right edge: Y1 \_\_\_\_\_ Y2 \_\_\_\_\_ Y3 \_\_\_\_\_

**RUSH:** Yes \_\_\_\_\_ NO \_\_\_\_\_

Rush charge applied per set-up. Turnaround is 7 business days, plus shipping. (Rush does not apply to some custom designs, please contact Infinity Drain for details)

**Customer:** \_\_\_\_\_

**Job Name:** \_\_\_\_\_

**Approved by:** \_\_\_\_\_

**Date:** \_\_\_\_\_

**Infinity Drain**  
145 Dixon Avenue  
Amityville, NY 11701  
Phone: 516.767.6786  
Fax: 516.740.3066  
www.Infinity Drain.com



NOTE: Installer must verify all rough-in dimensions prior to installation and consult local and national codes. Conformity and compliance to local and national codes are the responsibility of the installer.