

# FFED 65 Series

**ID** Infinity Drain

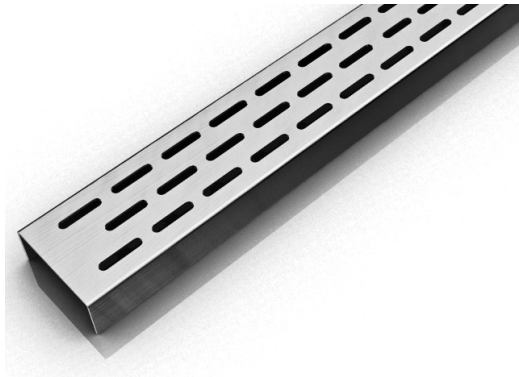
## FFED 65 | Fixed Length

- 16 gauge 304 Stainless Steel grate and channel
- Pre-pitched channel with "Fixed" lengths and "Fixed" center vertical (down) outlet location
- Not site sizeable
- Indoor or outdoor use
- Bonded "Flange" installation for flush against the wall.
- Lowest height for curbless installations
- Uses Liquid and Fabric Sheet Membrane waterproofing
- Grate can be removed completely for cleaning
- Flow rate 9 GPM per outlet\*

*\*Flow rate measured at outlet only. Measurement does not account for water in channel or sheeting on shower floor.*

### Finishes:

- \_\_\_ Satin Stainless
- \_\_\_ Polished Stainless
- \_\_\_ Lifetime Oil
- \_\_\_ Rubbed Bronze



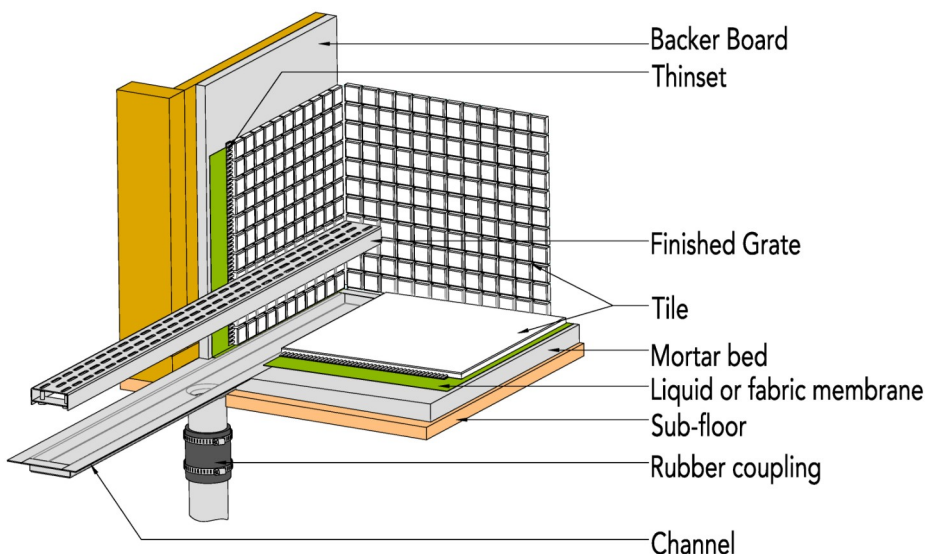
### Complete Kits:

FFED 6524	24" Complete Kit
FFED 6532	32" Complete Kit
FFED 6536	36" Complete Kit
FFED 6542	42" Complete Kit
FFED 6548	48" Complete Kit
FFED 6560	60" Complete Kit

### Components:

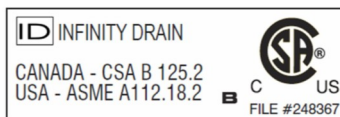
EA 6524	24" Stainless Steel Grate
EA 6532	32" Stainless Steel Grate
EA 6536	36" Stainless Steel Grate
EA 6542	42" Stainless Steel Grate
EA 6548	48" Stainless Steel Grate
EA 6560	60" Stainless Steel Grate
FC 6532	32" Stainless Steel Fixed Channel
FC 6536	36" Stainless Steel Fixed Channel
FC 6542	42" Stainless Steel Fixed Channel
FC 6548	48" Stainless Steel Fixed Channel
FC 6560	60" Stainless Steel Fixed Channel

## Installation (FF) Fixed Flange



### Infinity Drain

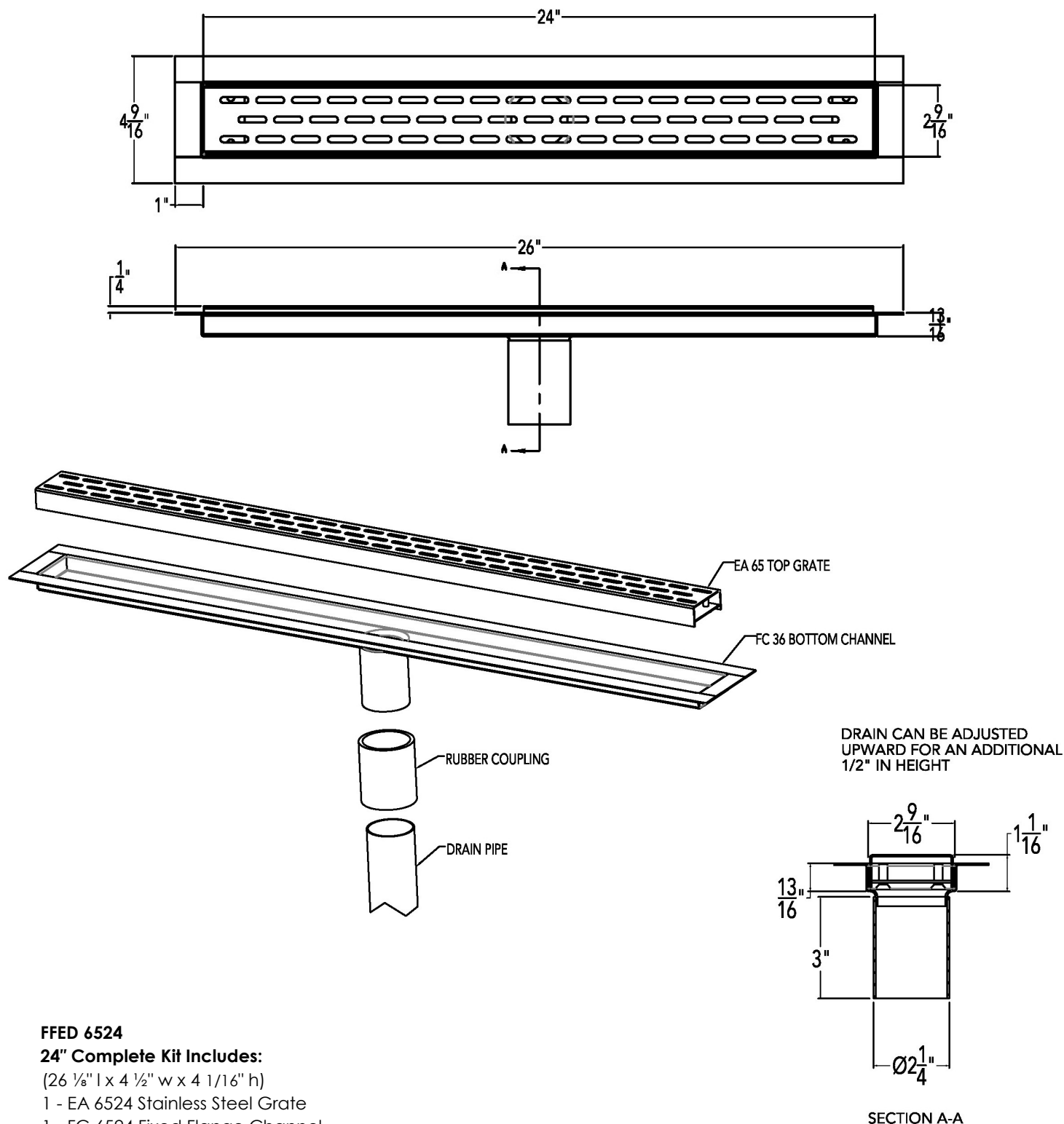
18 Secatoag Avenue  
Port Washington, NY 11050  
Phone: 516.767.6786  
Fax: 516.740.3066  
www.InfinityDrain.com



**Note:** Installer must verify all rough-in dimensions prior to installation and consult local and national codes. Conformity and compliance to local and national codes are the responsibility of the installer.

# FFED 6524 Specifications

**ID** Infinity Drain



## FFED 6524

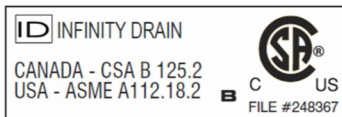
### 24" Complete Kit Includes:

(26 1/8" l x 4 1/2" w x 4 1/16" h)

- 1 - EA 6524 Stainless Steel Grate
- 1 - FC 6524 Fixed Flange Channel

## Infinity Drain

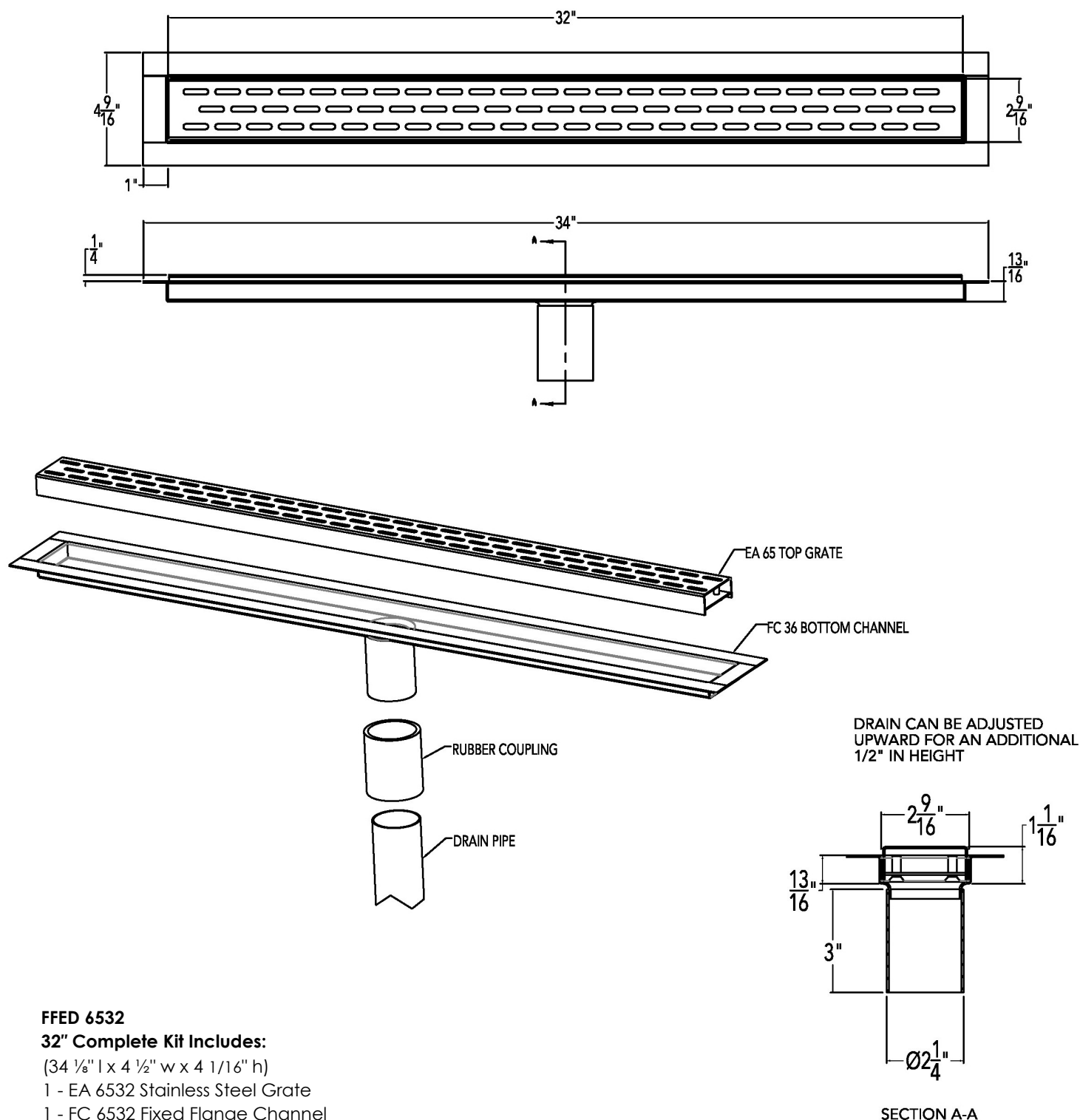
18 Secatoag Avenue  
Port Washington, NY 11050  
Phone: 516.767.6786  
Fax: 516.740.3066  
www.InfinityDrain.com



**Note:** Installer must verify all rough-in dimensions prior to installation and consult local and national codes. Conformity and compliance to local and national codes are the responsibility of the installer.

# FFED 6532 Specifications

**ID** Infinity Drain



## FFED 6532

### 32" Complete Kit Includes:

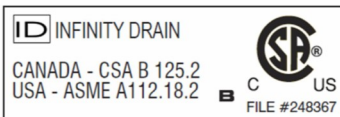
(34  $\frac{1}{8}$ " l x 4  $\frac{1}{2}$ " w x 4  $\frac{1}{16}$ " h)

1 - EA 6532 Stainless Steel Grate

1 - FC 6532 Fixed Flange Channel

## Infinity Drain

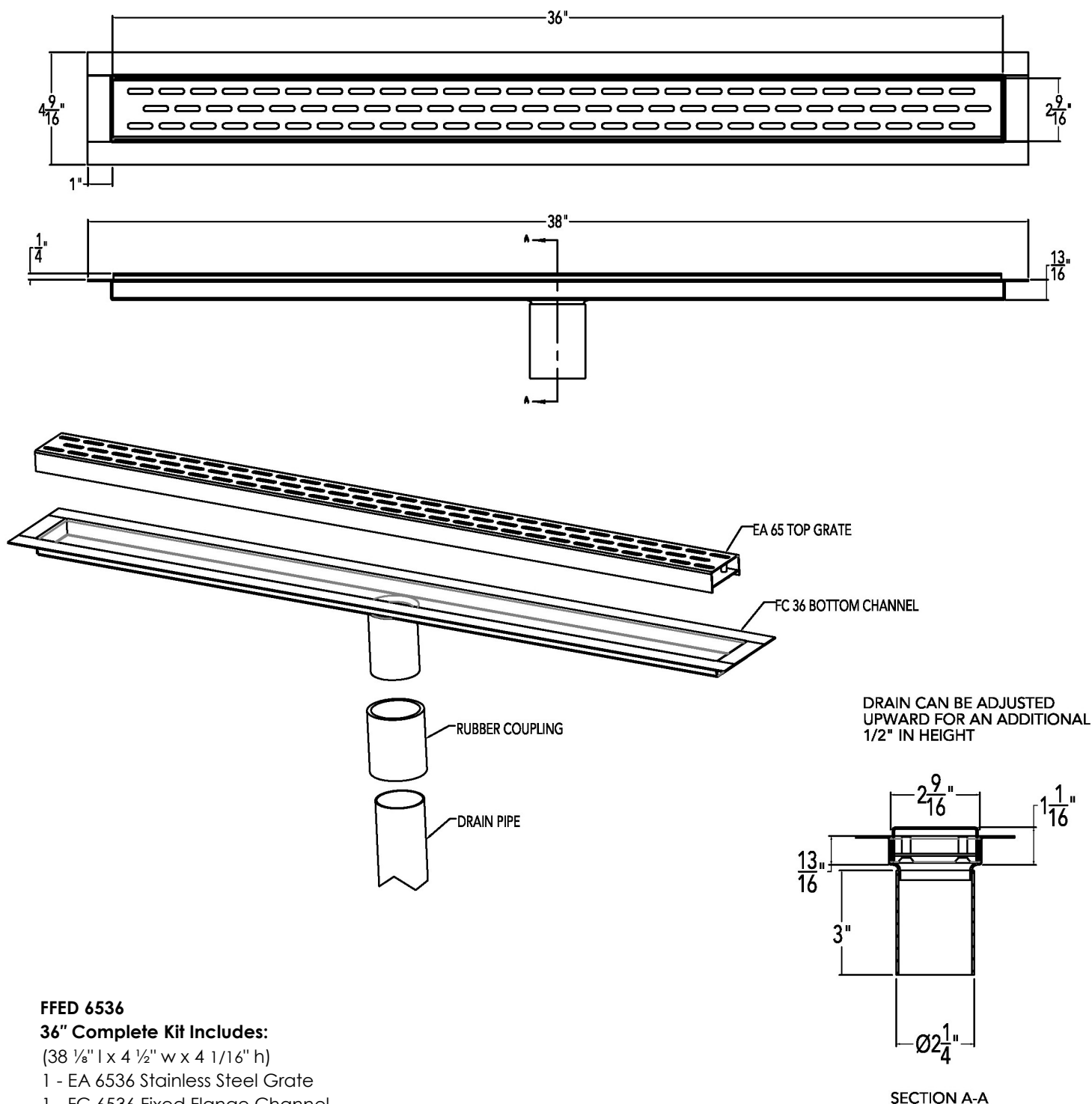
18 Secatoag Avenue  
Port Washington, NY 11050  
Phone: 516.767.6786  
Fax: 516.740.3066  
www.InfinityDrain.com



**Note:** Installer must verify all rough-in dimensions prior to installation and consult local and national codes. Conformity and compliance to local and national codes are the responsibility of the installer.

# FFED 6536 Specifications

**ID** Infinity Drain



## FFED 6536

### 36" Complete Kit Includes:

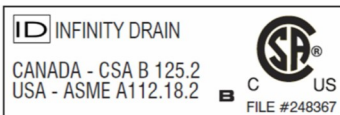
(38 1/8" l x 4 1/2" w x 4 1/16" h)

1 - EA 6536 Stainless Steel Grate

1 - FC 6536 Fixed Flange Channel

## Infinity Drain

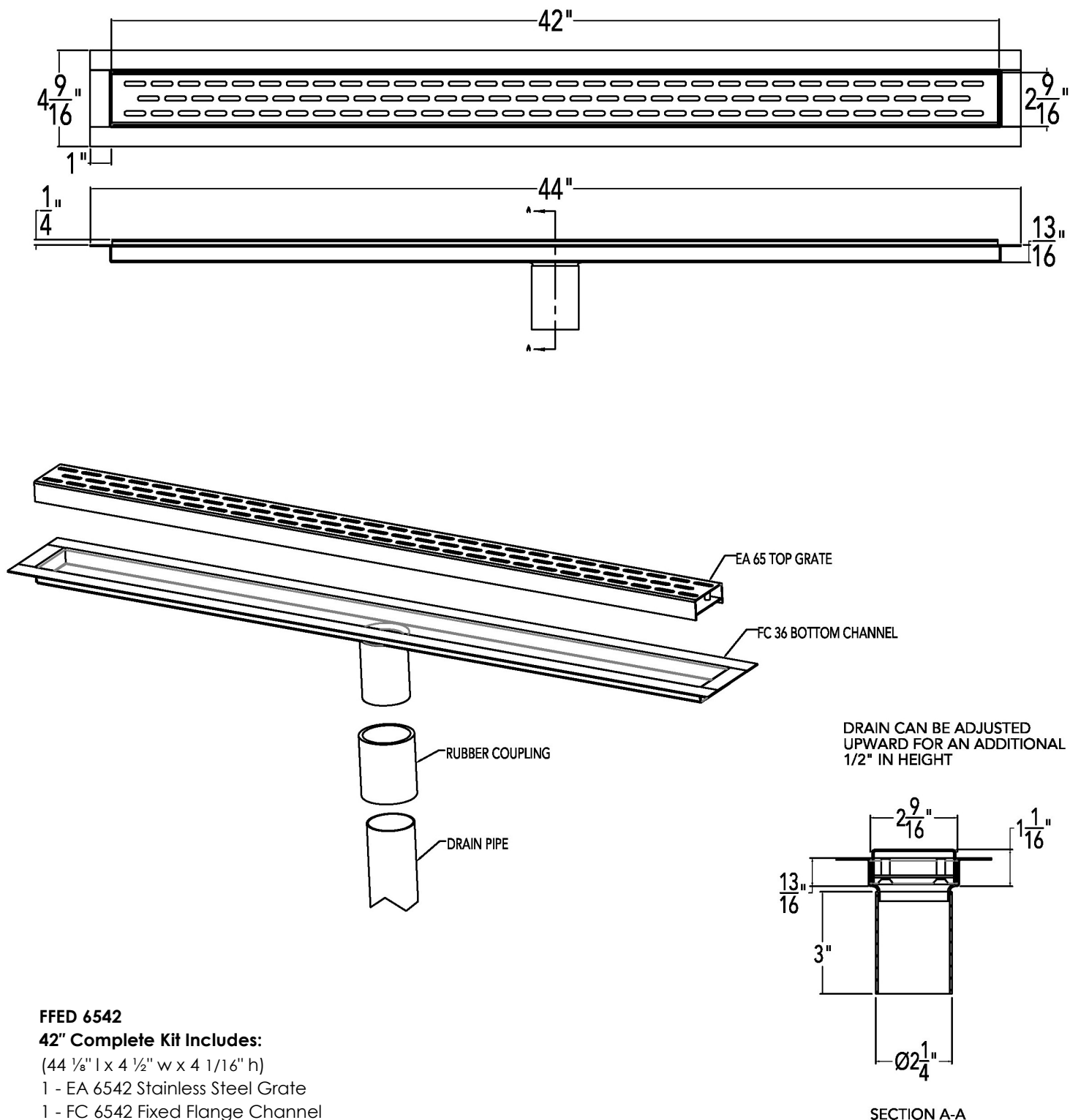
18 Secatoag Avenue  
Port Washington, NY 11050  
Phone: 516.767.6786  
Fax: 516.740.3066  
www.InfinityDrain.com



**Note:** Installer must verify all rough-in dimensions prior to installation and consult local and national codes. Conformity and compliance to local and national codes are the responsibility of the installer.

# FFED 6542 Specifications

**ID** Infinity Drain



## FFED 6542

### 42" Complete Kit Includes:

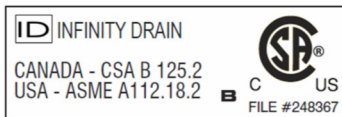
(44  $\frac{1}{8}$ " l x 4  $\frac{1}{2}$ " w x 4  $\frac{1}{16}$ " h)

1 - EA 6542 Stainless Steel Grate

1 - FC 6542 Fixed Flange Channel

## Infinity Drain

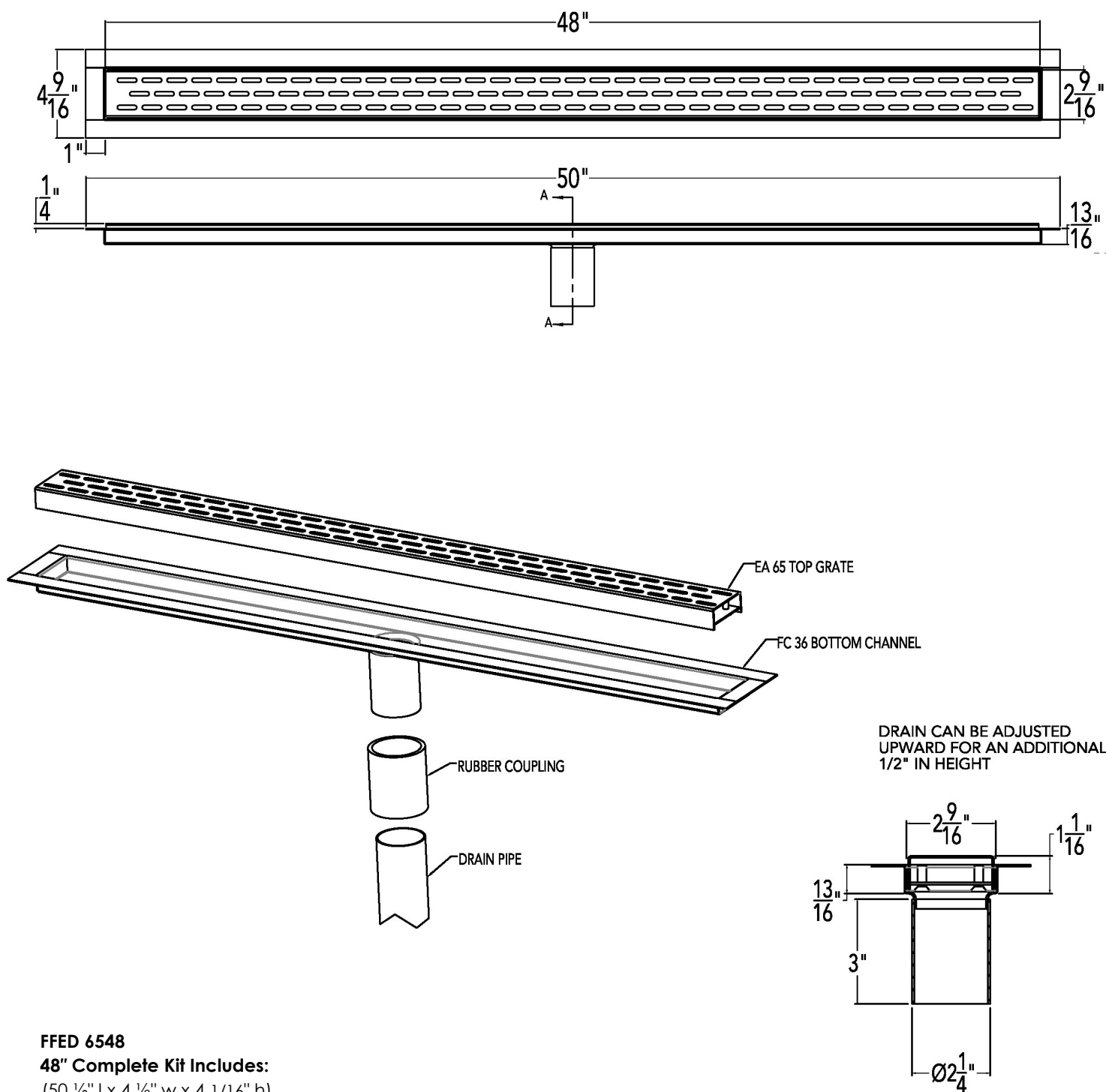
18 Secatoag Avenue  
Port Washington, NY 11050  
Phone: 516.767.6786  
Fax: 516.740.3066  
www.InfinityDrain.com



**Note:** Installer must verify all rough-in dimensions prior to installation and consult local and national codes. Conformity and compliance to local and national codes are the responsibility of the installer.

# FFED 6548 Specifications

**ID** Infinity Drain



## FFED 6548

### 48" Complete Kit Includes:

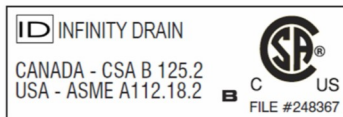
(50 1/8" l x 4 1/2" w x 4 1/16" h)

1 - EA 6548 Stainless Steel Grate

1 - FC 6548 Fixed Flange Channel

## Infinity Drain

18 Secatoag Avenue  
Port Washington, NY 11050  
Phone: 516.767.6786  
Fax: 516.740.3066  
www.InfinityDrain.com

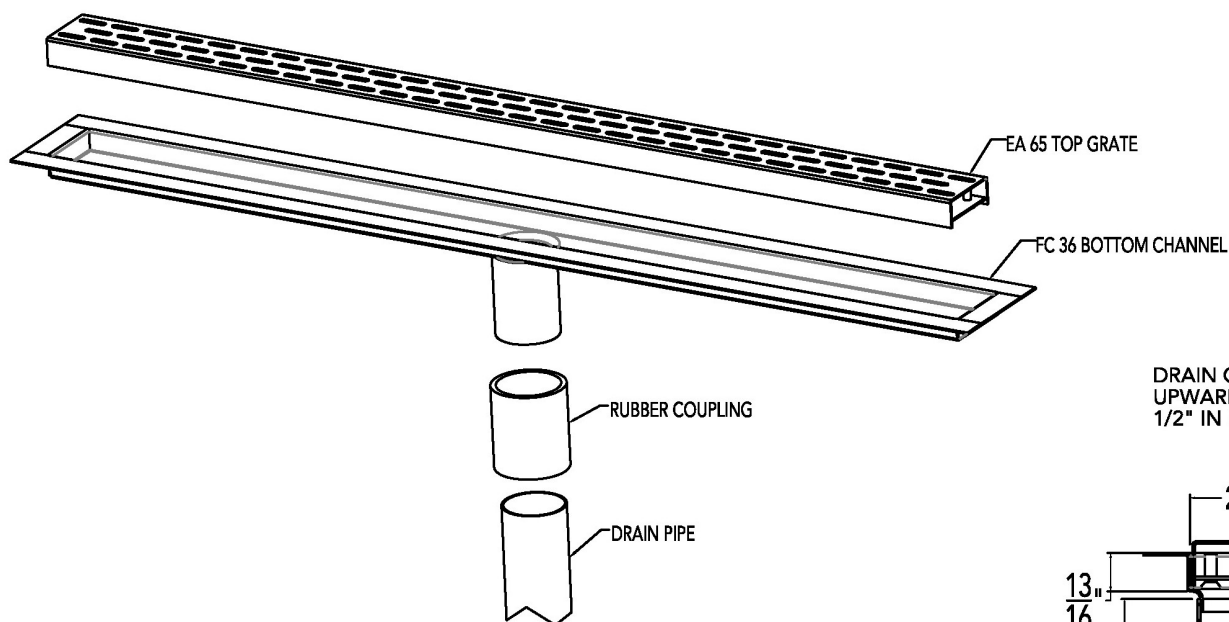
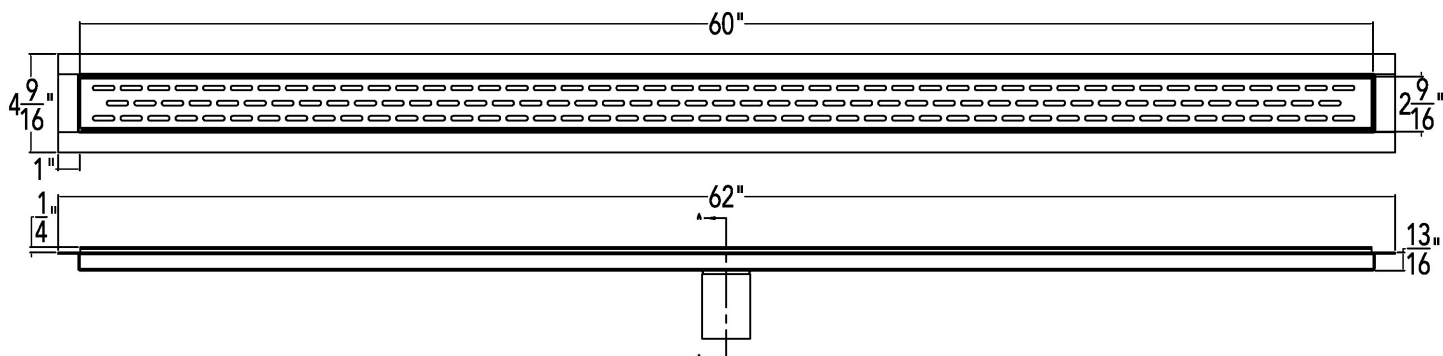


**Note:** Installer must verify all rough-in dimensions prior to installation and consult local and national codes. Conformity and compliance to local and national codes are the responsibility of the installer.

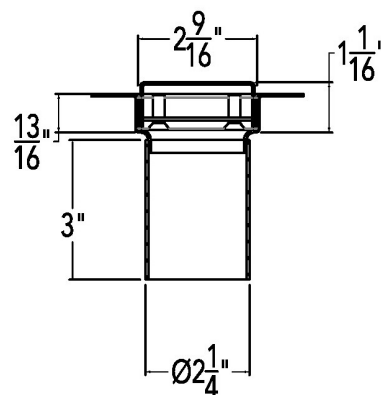


# FFED 6560 Specifications

**ID** Infinity Drain



DRAIN CAN BE ADJUSTED  
UPWARD FOR AN ADDITIONAL  
1/2" IN HEIGHT



SECTION A-A

## FFED 6560

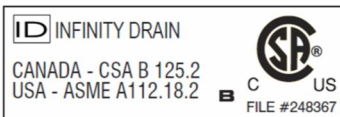
### 60" Complete Kit Includes:

(62 1/8" l x 4 1/2" w x 4 1/16" h)

- 1 - EA 6560 Stainless Steel Grate
- 1 - FC 6560 Fixed Flange Channel

## Infinity Drain

18 Secatoag Avenue  
Port Washington, NY 11050  
Phone: 516.767.6786  
Fax: 516.740.3066  
www.InfinityDrain.com



**Note:** Installer must verify all rough-in dimensions prior to installation and consult local and national codes. Conformity and compliance to local and national codes are the responsibility of the installer.